



Jewellery, Watches and Objects of Vertu

Tuesday 4th September 2018
at 2pm

Catalogue J9

BOARD of DIRECTORS

Pierce Noonan	Managing Director and CEO	020 7016 1700	pierce@dnw.co.uk
Nimrod Dix	Executive Chairman	020 7016 1820	nimrod@dnw.co.uk
Robin Greville	Head of Systems Technology	020 7016 1750	robin@dnw.co.uk
Christopher Webb	Head of Coin Department	020 7016 1801	chris@dnw.co.uk

AUCTION SERVICES and CLIENT LIAISON

Philippa Healy	Head of Administration (Associate Director)	020 7016 1775	philippa@dnw.co.uk
Emma Oxley	Accounts and Viewing	020 7016 1701	emma@dnw.co.uk
Christopher Mellor-Hill	Head of Client Liaison (Associate Director)	020 7016 1771	christopher@dnw.co.uk
Chris Rumney	Client Liaison Europe (Numismatics)	020 7016 1771	chrisrumney@dnw.co.uk
Chris Finch Hatton	Client Liaison	020 7016 1754	finch@dnw.co.uk
David Farrell	Head of Logistics	020 7016 1753	dave@dnw.co.uk
James King	Deputy Head of Logistics	020 7016 1833	james@dnw.co.uk

JEWELLERY, WATCHES and OBJECTS of VERTU

Frances Noble	Head of Department (Associate Director)	020 7016 1781	frances@dnw.co.uk
Laura Smith	Specialist	020 7016 1782	laura@dnw.co.uk

COINS, TOKENS and COMMEMORATIVE MEDALS

Christopher Webb	Head of Department (Director)	020 7016 1801	chris@dnw.co.uk
Peter Preston-Morley	Specialist (Associate Director)	020 7016 1802	ppm@dnw.co.uk
Jim Brown	Specialist	020 7016 1803	jim@dnw.co.uk
Tim Wilkes	Specialist	020 7016 1804	tim@dnw.co.uk
Nigel Mills	Consultant (Artefacts and Antiquities)	020 7016 1700	nigelmills@dnw.co.uk
Peter Mitchell	Consultant (British Hammered Coins)	020 7016 1700	petermitchell@dnw.co.uk
Douglas Saville	Consultant (Numismatic Literature)	020 7016 1700	dougllassaville@dnw.co.uk

BANKNOTES

Andrew Pattison	Head of Department	020 7016 1831	andrew@dnw.co.uk
Thomasina Smith	Specialist	020 7016 1832	thomasina@dnw.co.uk
Michael O'Grady	Consultant	020 7016 1700	michaelogrady@dnw.co.uk

MEDALS and MILITARIA

Nimrod Dix	Head of Department (Director)	020 7016 1820	nimrod@dnw.co.uk
Oliver Pepsys	Specialist (Associate Director)	020 7016 1811	oliver@dnw.co.uk
Mark Quayle	Specialist (Associate Director)	020 7016 1810	mark@dnw.co.uk
John Hayward	Consultant	020 7016 1700	johnhayward@dnw.co.uk
Arkadi Kilman	Consultant (Russian Awards)	020 7016 1700	akilman@dnw.co.uk
Dixon Pickup	Consultant (Militaria)	020 7016 1700	dixon@dnw.co.uk

TECHNOLOGY and MEDIA

Robin Greville	Head of Systems Technology (Director)	020 7016 1750	robin@dnw.co.uk
Ian Anderson	Head of Online Services (Associate Director)	020 7016 1751	ian@dnw.co.uk
Jan Starnes	Head of Photography (Associate Director)	020 7016 1773	jan@dnw.co.uk
Ian Kington	Photographer	020 7016 1774	iank@dnw.co.uk
Henry Browne	Photographic Consultant	020 7016 1774	henry@dnw.co.uk
Will Bennett	Senior Press Officer	07770 694254	will@dnw.co.uk
Danielle Quinn	Online Marketing	020 7016 1772	danielle@dnw.co.uk

UK REPRESENTATIVES

Richard Gladdle	Northamptonshire and the Home Counties	richardgladdle@dnw.co.uk
Garry Charman	The Midlands	garrycharman@dnw.co.uk
Michael Trenerry	The West Country	michaeltrenerry@dnw.co.uk
Jon Mann	North of England	jonmann@dnw.co.uk
Colin Fraser	Scotland	colinfraser@dnw.co.uk

OVERSEAS REPRESENTATIVES

John Burrridge MG	Australia Western Australia	johnburrridge@dnw.co.uk
Tanya Ursual	Canada Ontario	tanyaursual@dnw.co.uk
Michael Gietzelt	Germany Berlin	michaelgietzelt@dnw.co.uk
Eiichi Ishii	Japan Tokyo	eiichiishii@dnw.co.uk
Natalie Jaffe	South Africa Cape Town	nataliejaffe@dnw.co.uk
Dr Andy Singer	United States of America Maryland	andsinger@dnw.co.uk



DIX NOONAN WEBB Ltd
16 Bolton Street
Mayfair
London W1J 8BQ
Tel: 020 7016 1700
Fax: 020 7016 1799
VAT No. GB 562 8504 32

Account Enquiries: accounts@dnw.co.uk
General Auction Enquiries: auctions@dnw.co.uk
To place Commission Bids: www.dnw.co.uk
To book Viewing Appointments: viewing@dnw.co.uk
To Order a Catalogue: www.dnw.co.uk

Bankers: Lloyds, 39 Piccadilly, London W1J 0AA. Sort Code: 30-96-64. Account No. 00622865
Swift Code: LOYDGB2L IBAN: GB70LOYD30966400622865 BIC: LOYDGB21085

AN AUCTION OF

JEWELLERY, WATCHES AND OBJECTS OF VERTU

VIEWING AUCTION

Live Online Auction

With room bidding available at

16 Bolton Street

London

W1J 8BQ

Free live bidding:

www.dnw.co.uk

Tuesday 4th September 2018

at 2pm

VIEWING

Friday 24th August and Tuesday 28th August

16 Bolton Street, Mayfair, London W1J 8BQ

Strictly by appointment only

Thursday 30th August 1:00pm to 7:00pm

Friday 31st August 10:00am to 4:30pm

Monday 3rd September 10:00am to 4:30pm

The Morning of the Sale 10:00am to 1:00pm

16 Bolton Street, Mayfair, London W1J 8BQ

Public viewing

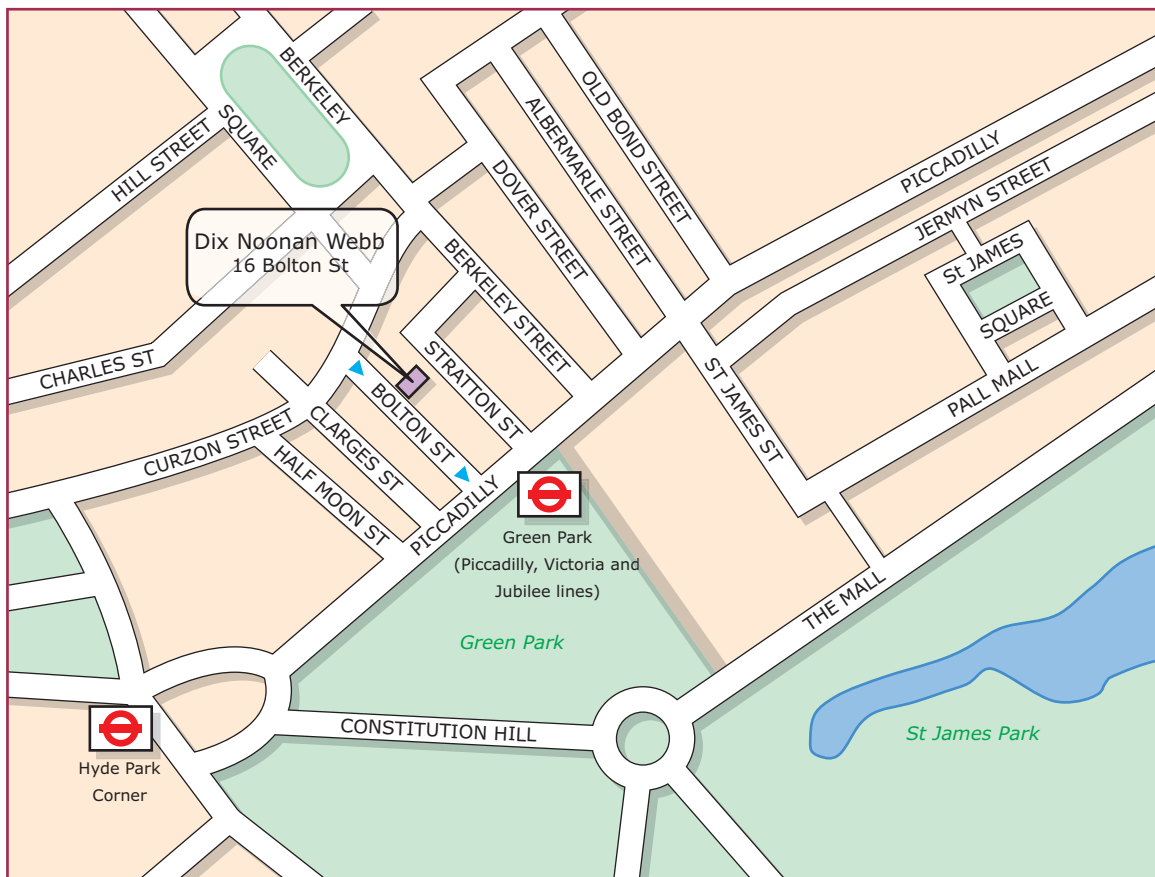
In sending commissions or making enquiries please contact:

Frances Noble or Laura Smith

CONTENTS

Please note: Lots will be sold at a rate of approximately 120 per hour

Jewellery	1-243
Objects of Vertu	244-255
Watches	256-280



Advance Bidding Facility

We strongly advise clients to take advantage of our easy to use advance bidding facility which provides bidders with total control over their bids right up to the point that the lot is offered for sale.

Bids made online cannot be seen by others and do not go live until the actual moment that the lot in question is being offered for sale. All bids can be easily altered or cancelled by the bidder prior to this point. An automated email will be sent confirming all bids and alterations.

Anyone with a valid email address can easily register to bid online.

There is no additional charge for online bidding and it is not necessary to pre-register a payment card in order to do so.

It is recommended that all bidders execute their own bids either prior to the sale by using our online advance bidding facility or live as the auction is taking place.

Whilst we are still happy to execute all bids submitted in writing or by phone, fax, etc., it should be noted that all bids left with us will be entered at our offices using the same bidding facility to which all our clients have access. There is, therefore, no better way of ensuring the accuracy of your advance bids than to place them yourself online.

Please note that advance bids are executed in the order in which they are received; therefore in the event of a tie any equal bid placed earlier will win the lot.

For any support queries please contact:

*Ian Anderson
ian@dnw.co.uk
020 7016 1751*

IMPORTANT INFORMATION FOR BUYERS

All lots in DNW auctions are automatically reserved at the bid step which reflects 80% of the lower estimate figure, unless otherwise instructed by the vendor.

Lots marked ‘*’ are subject to VAT at 20% unless exported outside the EU

**Lots marked ‘x’ are subject to importation duty of 5%
on the hammer price unless re-exported outside the EU.**

SALEROOM NOTICES

Should the description of a lot need to be amended after the publication of this catalogue, the amended description will appear automatically on the DNW website, www.dnw.co.uk. All such amendments are incorporated in the list of saleroom notices pertaining to this auction which are also posted on the DNW website. **Prospective bidders are strongly urged to consult this facility before sending bids or bidding online.**

TREATED GEMSTONES

It is common practice for many gemstones to be subject to various treatments to improve their appearance. Sapphires and rubies are routinely heat treated to improve their colour and clarity, emeralds may be treated with oils or resin, other gemstones may be subject to treatments such as staining, irradiation or coating. Jade may be bleached, polymer/resin filled or dyed, or a combination of treatments used.

Bidders should be aware that, unless stated to the contrary in the catalogue description, it should be assumed that the gemstones may be treated. Where Reports are provided from Gem Laboratories, the opinions as to gradings and treatments of stones may differ slightly between laboratories and DNW cannot be held responsible for any discrepancies.

UNMOUNTED GEMSTONES

Please note that VAT at 20% is chargeable on the Hammer Price of unmounted gemstones, excluding diamonds, rubies, sapphires and emeralds, and relevant lots are marked with an asterisk *.

EXPORT OF IVORY

The US Government has banned the import of ivory into the USA.

EXPORT OF OTHER ORGANIC MATERIALS

Other organic materials, such as coral and tortoiseshell may be covered by CITES legislation, and this may or may not impact export to other countries, please see www.cites.org for more information.

EXPORT OF WATCHES

Please note that watches by CORUM, FRANCK MULLER, PIAGET, TUDOR AND ROLEX are subject to import restrictions into the USA.

Please also note that in some circumstances we are unable to ship the watch with its strap due to certain import restrictions regarding material derived from endangered or otherwise protected species.

BUYERS' PREMIUM

Please note that the buyers' premium in this sale is 20% (plus VAT unless exported outside the EU).

CATALOGUE ILLUSTRATIONS AND THE INTERNET

Prospective bidders are reminded that the DNW website features enhanced high-resolution enlarged colour illustrations of every lot in this auction.

PRICES REALISED

The hammer prices of lots sold at DNW auctions are posted at www.dnw.co.uk in real time and telephone enquiries are welcome from 09:00 on the day after the auction.

Jewellery



Jewellery

1



AN **ARCHAEOLOGICAL REVIVAL BROOCH**, CIRCA **1860s/1870s**, of hollow construction, modelled as two opposing ram's head hoops supporting three amphora drops, an owl surmount above and a frog detail below, with applied wirework decoration, (repaired), *brooch width 56mm, length 60mm.* **£300-500**

2



A **VICTORIAN AMETHYST BAR BROOCH**, the double bar brooch with applied detail centred with hexagonal-cut amethyst, mount stamped '9ct', *brooch length 55mm.* **£200-300**

3



A **LATE VICTORIAN/EDWARDIAN OVAL AMETHYST AND HALF PEARL CLUSTER BROOCH**, the oval mixed-cut amethyst collet set within a scalloped surround of half pearls, mounted in yellow gold, *brooch length 34mm.* **£260-360**



-
- 4 A LARGE VICTORIAN AMETHYST CROSS PENDANT, composed of graduated oval mixed-cut amethysts in pinched collet settings, mounted in yellow gold, to later scrolled bale, *width 56mm.*
£500-700

-
- 5 A LATE VICTORIAN AMETHYST, DIAMOND AND SEED PEARL CLUSTER BROOCH, the oval mixed-cut amethyst claw set within a border of seed pearls spaced with collet set diamonds, each within a scalloped half surround of seed pearls, mounted in yellow gold, *brooch length 4cm.*
£300-500





-
- 6 A VICTORIAN DIAMOND CRESCENT BROOCH, the open crescent composed of graduated old brilliant-cut diamonds pinched collet set in gold and silver, in fitted maroon leather case, length 53mm. £500-700

-
- 7 AN EDWARDIAN SAPPHIRE AND DIAMOND SET BANGLE, the slim hollow hinged bangle with central marquise-shaped cluster panel set with a line of graduated mixed-cut sapphires within a surround of old brilliant-cut diamonds, between scrolled diamond set crossover shoulders, mounted in yellow gold, cased, internal bangle width 58mm. £1200-1500





- 8 A VICTORIAN TURQUOISE SET BRACELET, CIRCA 1840s, the lozenge-shaped central panel with raised scrolls and engraved detail supporting a flowerhead of cabochon turquoise stones, with glazed locket panel verso, to a two row snake-link chain bracelet with applied graduated bead detail and scroll engraved clasp with registration mark for Class I, 7th November 1843, parcel number 4, bracelet length 17.5cm. £500-600



- 9 A VICTORIAN GEM SET HINGED BANGLE, the polished two row hinged bangle supporting central bloomed panel gypsy set with graduated alternate step-cut emeralds and rose-cut diamonds, mounted in yellow gold, internal bangle width 55mm. £600-800

- 10 A VICTORIAN HINGED BANGLE, of buckle design, in bloomed gold, internal bangle width 54mm. £300-500



11



A CHINESE ROSE QUARTZ PENDANT, of roundish form, carved as a goldfish resting upon a lotus flower and leaves, the black cord mount decorated with seed pearls and a green glass bead, with accompanying snake-link long chain, with swivel fastener, pendant length 4.3cm (excluding mount), chain length 93cm. £250-350

12



A VICTORIAN GOLD CHAIN NECKLACE AND BRACELET, the hollow anchor and belcher links alternately faceted and impressed with flowerhead details, bracelet to an unassociated padlock clasp, hallmarked for 9ct gold, necklace length 44cm. £340-400

13



A VICTORIAN GOLD PART GUARD CHAIN, the narrow fancy knot-link chain to a later ring bolt clasp, in yellow precious metal, unmarked, chain length 91cm. £120-140

14



A 9CT GOLD GUARD CHAIN WITH MALTESE CROSS PENDANT, the chain of fine flattened curb-link design, the clasp stamped for 9ct, the Victorian Maltese cross pendant with central bloodstone panel and enclosing glazed locket compartment, together with a rose-diamond set heart-shaped pendant, chain length 142cm. £400-600

- 15 A KRUGERRAND MOUNTED PENDANT, the South Africa krugerrand dated 1982, in pendant mount with suspensory loop, length 4.5gm. £700-800



- 16 A SOVEREIGN SET PENDANT, the Victoria old head sovereign, 1887, claw set in pendant mount with ropetwist detail, to plain bale, diameter 28mm. £110-120



- 17 A COIN SET BRACELET, set with two 5 pesos, both 1955; two 10 pesos, both 1959; and a 20 pesos, 1959, all mounted within articulated half hoop framework, with roundel detail, clasp stamped '18k', with ropetwist safety chain, length 18cm. £2400-2600



18



A MULTI GEM SET FLOWER HOOP PENDANT, BY PASQUALE BRUNI, the heart-shaped hoop pendant composed of flowerhead clusters of vari-coloured round-cut gemstones, including citrine, amethyst, etc., mounted in white precious metal, suspended on a fine belcher-link chain, signed 'Pasquale Bruni' and stamped '750', to a ring bolt clasp with a cabochon blue stone set button, *pendant width 35mm.* £600-800

19

A VICTORIAN AMETHYST AND DIAMOND PENDANT, the oval flat cabochon amethyst with foliate surmount and tapered drop below set with graduated old brilliant and rose-cut diamonds, to a rectangular diamond set detachable bale, mounted in gold and silver, *total pendant length 54.5mm.* £260-340



20



AN AMETHYST DRESS RING AND EARRINGS, the ring claw set with a rectangular step-cut amethyst, between scrolling shoulders, 9ct gold mounted and a pair of heart-shaped amethyst and white stone earrings, *ring size O (leading edge).* £100-200

21



A BLUE CHALCEDONY PENDANT/BROOCH AND EARCLIP SUITE, each comprising a roughly triangular-shaped cabochon chalcedony collet set within a scrolled mount, mounted in yellow precious metal, stamped '9ct', *pendant length, including bale, 60mm.* £300-500

22



AN 18CT WHITE GOLD 'TANK FRANÇAISE' BAND RING, BY CARTIER, the flat band with track-link style detail, signed and stamped '750', and numbered 'GO2292', *ring size M.* £400-600

23

A SAPPHIRE AND DIAMOND DRESS RING, the cushion-shaped mixed-cut sapphire claw set within a cluster surround of claw set alternate marquise and brilliant-cut diamonds, to an outer surround of brilliant-cut diamond set leaves/petals, to wirework basket mount and shank, mounted in white precious metal, *ring size L½.* £800-1200



24



FIVE GEM SET NECKLACE CLASPS, of various designs, set with diamonds, sapphires and cultured pearls, mounted in yellow and white precious metal, three stamped '750'. £600-800

25



ASSORTED MIXED ITEMS, comprising two pairs of 9ct gold cufflinks, a pair of gilt metal cufflinks, a set of three 9ct gold collar studs, cased, five assorted cross pendants, a section of anchor-link chain, four stickpins, a 19th century French gilt metal mounted souvenir purse, the hinged glazed lid with painted scene of La Place de la Concorde in Paris, and opening to reveal a calendar for 1848, two French religious pendants, and a turquoise and seed pearl bar brooch. £300-400

26



A SMALL COLLECTION OF GEORGIAN AND VICTORIAN JEWELLERY, comprising a garnet five stone ring, a hairwork memorial ring, a glazed hairwork locket pendant, a glazed hairwork and garnet cluster memorial brooch, a white stone cameo brooch carved to depict Dante Alighieri and a garnet half hoop ring (adapted). £300-400

27



ASSORTED ITEMS, comprising a diamond and synthetic emerald brooch, a cased gilt thimble, a silver locket on chain, a five stone sapphire and diamond ring, a cultured pearl set pendant on chain, a pair of 9ct gold earhoops and three gilt metal square buttons. £360-400

28



A PAIR OF TWO COLOUR ROPETWIST HOOPS, unmarked, a *corallium Rubrum* branch necklace and a gem set bar brooch applied with two seed pearl insects, (damaged), hoops 3.4cm diameter, necklace length 35cm. £140-160
Please note coral is covered by CITES legislation and may be subject to import/export and trade restrictions.



- 29 AN AMETHYST DRESS RING, BY VERDURA, the broad polished reeded band in yellow precious metal, claw set with an oval mixed-cut amethyst, mount signed 'Verdura' and stamped '18k', in a blue leather Verdura case, ring size O. £800-1200



- 30 AN 18CT GOLD THREE STONE SAPPHIRE AND DIAMOND RING, BY THEO FENNELL, the central sapphire flanked by two brilliants, each in flattened rubover setting, shank signed 'FENNELL' and with maker's mark and hallmark for London, ring size L. £300-500

- 31 A MARQUISE-SHAPED CABOCHON AMETHYST AND DIAMOND CLUSTER RING, the high domed amethyst collet set within a surround of claw set brilliant-cut diamonds between trifurcated shoulders, yellow precious metal mounted, shank stamped '18ct', ring size O½. £600-800





32 A TURQUOISE SET NECKLACE AND BRACELET SUITE, the slightly graduated necklace and five row bracelet composed of stylised open links accented with claw set round cabochon turquoise, clasps stamped '750', necklace length 46cm. £4000-6000

33



TWO GEM SET BAND RINGS, the first a tapered polished 18ct gold band ring with brilliant-cut diamond in square rubover setting, shank hallmarked; the second an 18ct gold polished band alternately set with three mixed-cut rubies and two old brilliant-cut diamonds in navette-shaped setting, shank hallmarked, *first ring diamond approximately 0.25 carats, both rings size Q.* £500-700

34

A RUBY AND DIAMOND RING, the pear-cut ruby within a cluster surround of brilliant-cut diamonds between brilliant-cut diamond shoulders, claw set, mounted in yellow precious metal, shank stamped '750', *ring size P.* £200-300



35



A SINGLE STONE DIAMOND RING, the polished tapered band ring rubover set with an old brilliant-cut diamond, shank stamped '18ct', *diamond approximately 0.5 carats, ring size R.* £400-500

36

A LATE VICTORIAN/EDWARDIAN SAPPHIRE AND DIAMOND FIVE STONE RING, the three graduated mixed-cut sapphires and two old brilliant-cut diamonds with pairs of rose-cut diamond points between (four lacking), to scrolled gallery, mounted in yellow gold, *total diamond weight approximately 0.85 carats, ring size Q.* £500-700



37



A CHAIN NECKLACE, of flattened polished and textured curb-link form, clasp stamped '585', length 45.5cm. £400-600

38



AN INDIAN GEM SET PENDANT, with central cabochon and vari-gem set throughout, with pearl set fringe and central drop below below, on suspensory loop, (gems and pearls untested), length 5.3cm. £300-400

39

A THREE COLOUR JADE BROOCH, the mount modelled as bark textured panels in raised wirework setting, claw set with three carved jade buddha motifs, in lavender, pale green and bottle green, reverse stamped '14k', (jade untested for treatments), length 4.8cm. £300-400



40



A FRENCH GOLD KNOT BROOCH, BY HERMES, modelled as an overhand knot of two ropetwist strands, in polished yellow gold, to double pin fitting, signed 'Hermes, Paris #1242', and bearing French eagle's head assay marks, length 48mm. £800-1000

41

A PAIR OF GOLD HEART EARRINGS, BY PIORAY, the polished heart-shaped panel drops suspended beneath domed stud surmounts, in yellow precious metal, signed, stamped '750' and numbered '19103', length 33mm.

£300-400



42



A PAIR OF TWO COLOUR HOOP EARRINGS, BY GUBELIN, the hoops of two colour track-link design, stamped '750' and bearing maker's mark, diameter 20mm. £260-300



A FRENCH CULTURED PEARL NECKLACE WITH YELLOW SAPPHIRE AND DIAMOND PENDANT, the single row of uniform cultured pearls suspending a detachable octagonal domed panel pendant pavé set with brilliant-cut diamonds, centred with a collet set step-cut yellow sapphire, to a border of channel set calibr -cut yellow sapphires, to similarly set bale, the pearls to a double hoop clasp, one polished, the other pav  set with brilliant-cut diamonds, mounted in yellow gold, bearing French eagle's head assay marks, in pale blue suede case, signed 'Jacquot, Strasborg', *necklace length 42cm*.

£2000-3000



44

A CHINESE JADE RECTANGULAR PANEL BROOCH, carved and pierced decorated to both sides with a crouching lop-eared rabbit, with a small creature on its back, the panel in claw mount, stamped to the reverse '14k', with Chinese maker's marks, with case, (jade untested for treatments), dimensions length 32mm x width 27mm x depth 4mm (including mount). £200-300

45



AN EARLY 20TH CENTURY CHINESE RECTANGULAR CARVED JADE PENDANT, the slightly mottled emerald green pendant of rectangular framed tablet form, carved on both sides in relief, the front with a phoenix (fenghuang) posing against a background of lingzhi fungi, lotus and a sacred jewel, the reverse with a single peony bloom amidst lingzhi fungi, all symbolising love, longevity and beauty, (jade untested for treatment), length 79mm x width 52mm x depth approximately 12mm.

£1000-1500



46



A COLLECTION OF ASSORTED GEM SET JEWELLERY, including a pair of single stone ruby drop earpendants, a ruby and diamond ring, an emerald and diamond ring, a black diamond set ring and earpendant suite, a pair of black diamond drop earpendants, a pinky-orange sapphire set ring and a pair of blue and white stone cluster earstuds, (all stones untested for natural vs. synthetic origin and treatments). £260-360

47



A SUITE OF GREEN GEMSTONE JEWELLERY, comprising a line bracelet, a cluster pendant, a five stone ring and a pair of three stone earrings, all mounted in 9ct gold. £200-300

48



A COLLECTION OF NINE ASSORTED GEM SET PENDANTS, of various designs, set with opal, emerald, sapphire, cultured pearl, blue topaz, etc, together with an eight row freshwater cultured pearl and black glass bead necklace, (all stones untested for natural vs. synthetic origin and treatments). £200-300

49



A LARGE COLLECTION OF ASSORTED VICTORIAN JEWELLERY, including a 9ct gold gate-link bracelet, with padlock clasp, two silver mounted hardstone inset Scottish brooches, a carved hardstone panel stickpin depicting a forget-me-not, a 9ct gold double curb-link chain necklace, a 9ct gold box-link chain necklace, a black enamel and seed pearl mourning brooch with glazed hairwork panel verso, a 9ct 'Pisces' pendant, a Delftware necklace and earring suite, together with further brooches, necklaces, cultured pearls, etc. £800-1200

50



A COLLECTION OF BLUE STONE JEWELLERY, comprising a bracelet of linked claw set oval-cut stones, mounted in 9ct yellow gold, together with two pairs of similar earpendants, mounted in yellow precious metal and a pair of two stone earrings mounted in 9ct white gold, (all stones untested for treatments or origin). £200-300

51



A MIXED LOT OF JEWELLERY, including a small natural pearl necklace (untested), a diamond set cocktail watch, on later expanding bracelet strap, a Victorian shell cameo brooch depicting Hebe and the eagle, cased and further paste set items. £300-400



A GOLD AND RUBY BROOCH/PENDANT, BY ILIAS LALAOUNIS, the circular domed boss brooch with applied filigree and granulation decoration, to central cabochon ruby, reverse signed, stamped 'K22' and bearing maker's mark, *diameter 45mm*. £1000-1500

A PAIR OF GOLD AND RUBY EARCLIPS, BY ILIAS LALAOUNIS, the circular bombé clips set with cabochon rubies surrounded by filigree and granulation detail, stamped 'Greece, K22', and '750', bearing maker's mark and numbered 'H17', *diameter 22mm*. £800-1000



- 54** A PAIR OF 18CT GOLD TRIPLE CIRCULAR EARRINGS BY BUCCELLATI, composed of three vertically set graduating interlocking hoops, of weave design with textured finish, on post and hinged clip fittings, signed 'Buccellati Italy 18k', length 33cm, width 19mm. £800-1200



- 55** A PINK SAPPHIRE RING, BY PIORAY, the spherical bezel pavé set with round-cut pink sapphires, above a polished domed band ring, mounted in yellow precious metal, stamped '750' and signed, ring size E with sizing beads. £300-400

- 56** AN 18CT GOLD DRESS RING, BY TIFFANY & CO, the broad polished reeded dress ring with wrapover cross motif to the centre, in yellow gold, signed 'Tiffany & Co, ©1990' and stamped '750', in signed case, ring size O. £500-800



57



OF MASONIC INTEREST: A DIAMOND AND SAPPHIRE SET MASONIC PENDANT, the pendant modelled as a foliate wreath hoop supporting a Masonic divider and protractor motifs set with with single-cut diamonds and a round-cut sapphire, with central collet set old brilliant-cut diamond in starburst polished surround, the reverse with presentation inscription, on an unassociated chain, *principal diamond approximately 0.6 carats, pendant length 43mm.* £800-1000

58



A DIAMOND SET PRINCE OF WALES FEATHERS BROOCH, the triple feather and crown motif with enamelled banner below, between foliate scrolls and suspending central single stone pendant drop, millegrain set throughout with graduated old brilliant and rose-cut diamonds, mounted in white precious metal, *brooch length 35.5mm.* £150-200

59



OF REGIMENTAL INTEREST: A DIAMOND SET BROOCH FOR THE ROYAL DRAGOONS GUARDS, the plain bar brooch centred with a crown surmounted by a lion passant, set with rose-cut diamonds, the crown with red guilloche enamel velvet and black and white enamel ermine, mounted in two colour precious metal, *bar brooch length 50mm.* £100-120



OF ROYAL INTEREST: AN EDWARD VII ENAMEL BADGE/PENDANT, the central oval panel enamelled with a portrait of the King in dress uniform, within blue enamelled garter surround and beneath a crown surmount, mounted in 9ct gold, the reverse bearing partial hallmark and signed 'Spencer, London', *length 45.5mm.* **£300-500**

After a portrait by Frederick Hall, 1860-1948, displayed in the Southampton City Art Gallery.



OF REGIMENTAL INTEREST: A SCOTS GREYS/ROYAL DRAGOONS DIAMOND SET BROOCH/PENDANT, modelled as an eagle, with outspread wings, with green enamelled laurel spray to the front, pavé set throughout with single-cut and rose-cut diamonds, gold and silver mounted, (*one diamond missing, replacement stone to eye*), *length 23mm.* **£300-400**

OF REGIMENTAL INTEREST: A ROYAL ARTILLERY DIAMOND SET BROOCH, the flaming grenade above a banner with the motto 'Ubique', pavé set throughout with graduated brilliant and single-cut diamonds, to millegrained borders, mounted in white precious metal, *length 46mm.* **£400-600**



63



TWO 19TH CENTURY MICRO-MOSAIC PANELS, the first depicting a black and white King Charles Cavalier spaniel, lying on a grassy bank, in a black glass surround, within a gold scrolled brooch mount, the second depicting a landscape of trees beside a ruined water mill, to a black glass surround, collet set, to plain suspensory loop, on later anchor-link chain necklace, clasp stamped '750', brooch width 60cm, chain length 41cm. £500-600

64



A COLLECTION OF THREE VICTORIAN BROOCHES/PENDANTS, comprising a shell cameo brooch depicting the angel Gabriel, in a gold mount with applied wirework and ropetwist detail, a shell cameo brooch depicting Dante Alighieri, in a textured scroll edge panel mount, and a 19th century pietra dura pendant depicting a dove, within a wirework decorated mount, glazed locket verso, to tapered bale, first brooch length 63mm. £300-500

65



A CIRCULAR PIETRA DURA PANEL AND AN OVAL MICRO-MOSAIC INSET PANEL, both unmounted, the first decorated with a colourful bird in flight, above a spray of flowers, inset to a black ground; the second centred with a floral spray of roses, within a black glass surround, first diameter 34mm, second length 43mm. £100-120



OF ROYAL INTEREST: AN AGATE, ENAMEL AND HALF PEARL MEMORIAL PENDANT, the oval cabochon banded agate collet set within a black enamel and half pearl surround, with glazed locket verso displaying a photograph of Feodora of Leiningen, Princess of Hohenlohe-Langenburg, in widow's silks, the mount inscribed 'In recollection of dear Gt aunt Feodora b. Dec 1807 d. Sept 23 1872, From grandmama V.R.', to black enamel decorated bale, pendant length 42mm. £800-1200

Feodora of Leiningen, Princess of Hohenlohe-Langenburg (December 1807 - September 1872) was the half sister of Queen Victoria. Feodora and her brother Carl were the children of Emich Carl, Prince of Leiningen (1763-1814) and Princess Victoria of Saxe-Coburg-Saalfeld (1786-1861). Following the death of her first husband, Princess Victoria married the English Prince Edward, Duke of Kent and Strathearn, and they had a daughter, Victoria (Queen Victoria).

Queen Victoria and her elder half sister enjoyed a close relationship throughout their lives. In a letter addressed to Victoria and dated 1854, found in Feodora's papers on her death she had written: '*I can never thank you enough for all you have done for me, for your great love and tender affection. These feelings cannot die, they must and will live in my soul - till we meet again, never more to be separated - and you will not forget*'. Feodora's husband died in 1860 and Queen Victoria's husband Albert died a year later.

Feodora died on 23 September 1872 and Queen Victoria wrote after her sister's death: '*I stand so alone now, no near and dear one near my own age, or older to whom I could look up to, left! All, all gone! She was my last near relative on an equality with me, the last link with my childhood and youth*'.

See: Rappaport, H., *Queen Victoria: A Biographical Companion*, 2003.

This brooch is illustrated in *Victorian Jewellery*, by Margaret Flower, published by Cassell & Company Ltd, 1951, page 178.

The image depicts the oil painting of Princess Feodora of Hohenlohe-Langenburg by Sir William Ross



67



A PAIR OF DANISH EARPENDANTS, BY **KLAUS RYGAARD OF DENMARK**, of tear-drop form, the terminals with foliate pierced detail, and partial textured finish, unmarked, on unassociated post fittings, unsigned, length 3.8cm. £60-80

68

A PAIR OF DIAMOND SET CROSS EARRINGS, BY **PALOMA PICASSO FOR TIFFANY & CO**, the stylized ribbon crosses set with brilliant-cut diamonds, mounted in white precious metal, to clip and post fittings, with mount to the reverse to suspend detachable drop below (not included), the mounts signed 'Paloma Picasso' and '©1985 TIFFANY & CO' and stamped 'plat', length 22mm. £600-800



69

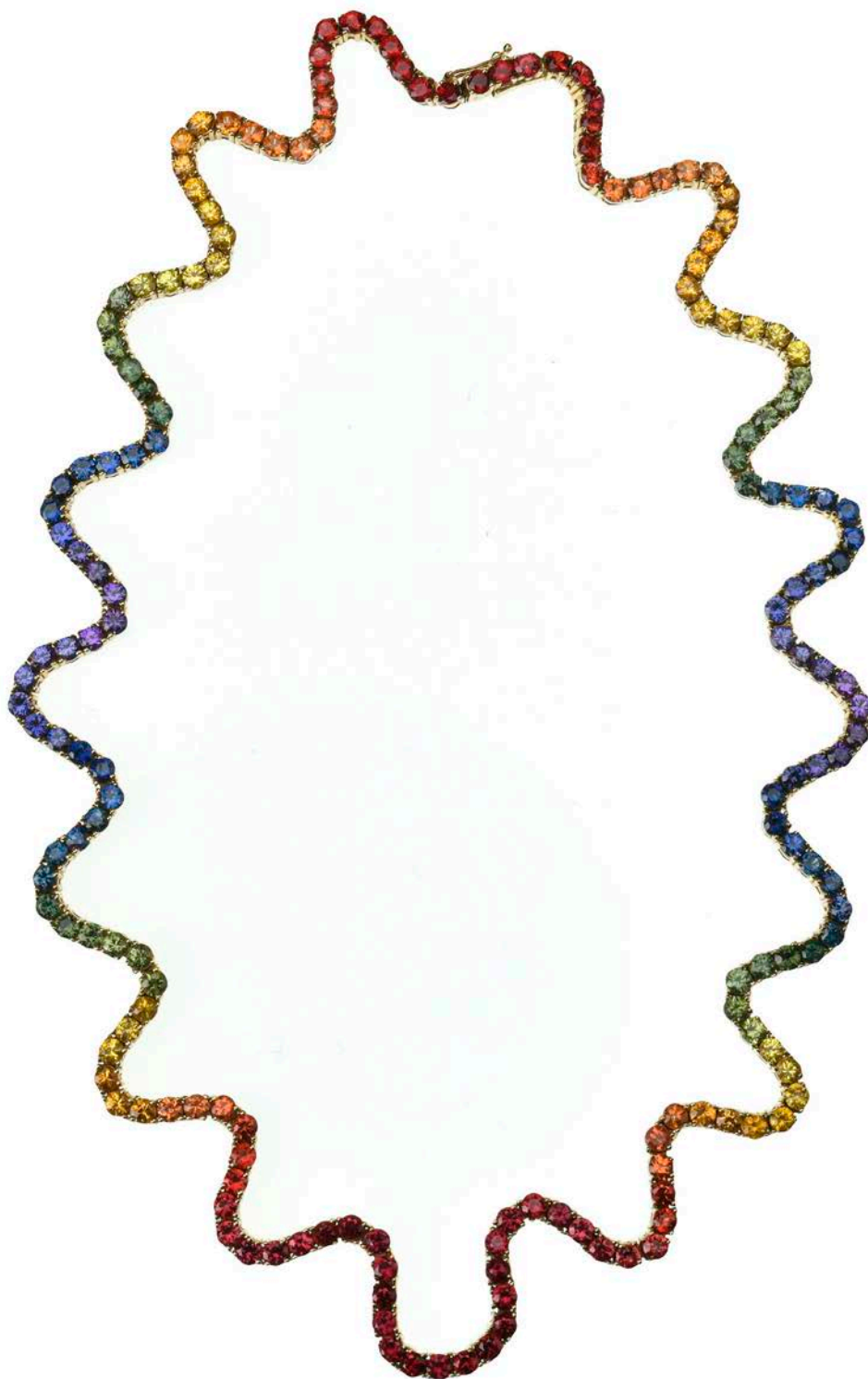


A PAIR OF SAPPHIRE AND DIAMOND CLUSTER EARSTUDS, the round mixed-cut sapphires claw set within flowerhead surrounds inset with small brilliant-cut diamonds, mounted in white precious metal, to screw back fittings, stamped '9ct', cluster diameters 11mm. £400-600

70

A CULTURED PEARL AND DIAMOND SET RING AND A PAIR OF CULTURED PEARL AND DIAMOND EARSTUDS, the 9ct gold ring centred with a cultured pearl within a crossover setting, with single-cut diamond highlights, and a pair of 9ct gold similarly set earstuds, with frilled settings, on post fittings, ring size N. £120-160





A MULTI-COLOURED SAPPHIRE WRIGGLE NECKLACE, the sapphires in various hues to imitative the colour wheel, each stone claw mounted, yellow precious metal mounted, laser hallmarked '585' for 14k, Birmingham, 2007 and bearing maker's mark 'DK', (sapphires untested), length 39.5cm.

£600-800

-
- 72 A LATE VICTORIAN SAPPHIRE AND DIAMOND CLUSTER RING, the mixed-cut sapphire in a cluster surround of rose-cut diamonds, in open claw settings, mounted in 15ct yellow gold, shank hallmarked for 1887, ring size O.
£150-200



-
- 73 A SINGLE STONE DIAMOND RING, the cushion-shaped old brilliant-cut diamond claw set, to narrow shank stamped '18ct, plat', diamond weight approximately 0.75 carats, ring size T. £500-700



-
- 74 A VICTORIAN STYLE THREE STONE DIAMOND RING, the three graduated old brilliant-cut diamonds with pairs of rose-cut diamond points between, mounted in yellow precious metal with scrolled gallery, shank stamped '18ct', total weight of old brilliant-cut diamonds approximately 0.65 carats, ring size L. £400-600



-
- 75 A DIAMOND FULL ETERNITY RING, collet set throughout with brilliant-cut diamonds, yellow precious metal mount stamped '750', ring size L. £600-800





A SAPPHIRE SET ABSTRACT BROOCH, 1960s, the slightly domed cluster of textured fronds accented with claw set round-cut sapphires, mount hallmarked for 18ct gold, *brooch width 45mm.* £400-600



77 A RUBY AND DIAMOND SET RING AND EARCLIPS, the openwork bombé panel ring set with mixed-cut rubies and brilliant-cut diamonds, mounted in yellow precious metal, to a wirework shank, the earclips of matching design, stamped '750', *ring size N½, earclip length 20mm.* £500-600

78 AN 18CT GOLD AND DIAMOND MESH BRACELET, the mesh weave decorated with brilliant-cut diamond set stars, and applied with vertical spacer bars and bead terminals, stamped '750', *length 18.4gm.* £1500-2000



79



AN ART DECO DIAMOND SET RECTANGULAR PANEL BROOCH, centred with a brilliant-cut diamond, within pierced foliate and geometric surround, with rose-cut diamond highlights and polished faceted panels, white precious metal mounted, unmarked, *principal diamond approximately 0.5 carats, length 5.2cm.* **£600-800**

80



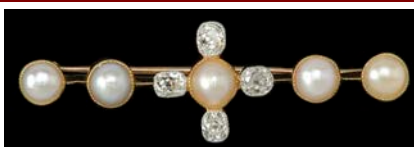
AN EDWARDIAN PEARL AND DIAMOND BAR BROOCH, the bar composed of two rows of old brilliant-cut diamonds, to central white pearl accent and grey pearl terminals, mounted in yellow gold, (*pearls untested for natural vs. cultured origin*), *length 38mm,* **£150-200**

81



A DIAMOND CLUSTER TIE PIN, the round clusters of old brilliant-cut diamonds, to a plain polished bar brooch, mounted in yellow and white precious metal, *total diamond weight approximately 1.46 carats, brooch length 62mm.* **£700-900**

82



AN EDWARDIAN DIAMOND AND HALF PEARL BAR BROOCH, the knife-edge bar spaced with five millegriained collet set half pearls, the central pearl between four similarly set cushion-shaped old-cut diamonds, mounted in yellow and white precious metal, reverse stamped '18ct', (*pearls untested*), *brooch length 53mm.* **£500-700**



AN ART DECO DIAMOND SET PANEL BROOCH, the openwork geometric panel brooch milligrain set throughout with graduated old brilliant-cut diamonds, mounted in white precious metal, *brooch length 47mm, principal diamond approximately 1.05 carats, total diamond weight approximately 6.25 carats.* **£3600-5000**



-
- 84** A TWO STONE DIAMOND CROSSOVER RING, the two old brilliant-cut diamonds claw set to crossover mount, mounted in white precious metal, shank stamped 'WG&S plat', total diamond weight approximately 0.38 carats, ring size O. £200-300



-
- 85** A SAPPHIRE AND DIAMOND PANEL RING, the square panel set with five mixed-cut sapphires with pairs of old-cut diamonds between, to collet set single stone diamond shoulders, mounted in white precious metal, shank stamped '18ct' and 'plat', ring size O. £400-600



-
- 86** A SOLITAIRE DIAMOND RING, the brilliant-cut diamond in simple claw setting, mounted in platinum, hallmarked and bearing maker's mark 'H.W.T.', diamond weight approximately 1 carat, ring size O. £1000-1500



-
- 87** A DIAMOND CLUSTER RING, the openwork snowflake cluster millegrain set throughout with graduated brilliant-cut diamonds, between diamond set shoulders, mounted in 18ct white gold, shank hallmarked, ring size N. £400-500



-
- 88** A SAPPHIRE AND DIAMOND CLUSTER RING, the round mixed-cut sapphire claw set within a surround of brilliant-cut diamonds, between trifurcated shoulders, mounted in white precious metal, stamped '18ct & plat', ring size N.

£600-700



-
- 89** A BLACK OPAL AND DIAMOND CLUSTER RING, the oval cabochon black opal claw set within a surround of brilliant-cut diamonds, mounted in white precious metal, shank stamped '18ct', accompanied by an I.G.N. gemmological report, ring size R.

£2600-3000

The Istituto Gemmologico Nazionale report number 25643, dated 11th April 2018 confirms the natural Australian black opal weighs approximately 12.50 carats, and the diamonds have a total weight of 1.8 carats, with an average clarity of VVS-VS and an average colour of H-I.





THREE VICTORIAN ROSE-CUT DIAMOND SET STICKPINS OF SPORTING THEME, the terminals modelled as a pheasant, a gun dog and a fighting cock, each mounted in gold and silver and with a cabochon ruby eye, together with a plain half pearl set example and an example with a seed pearl set letter E terminal. £300-500

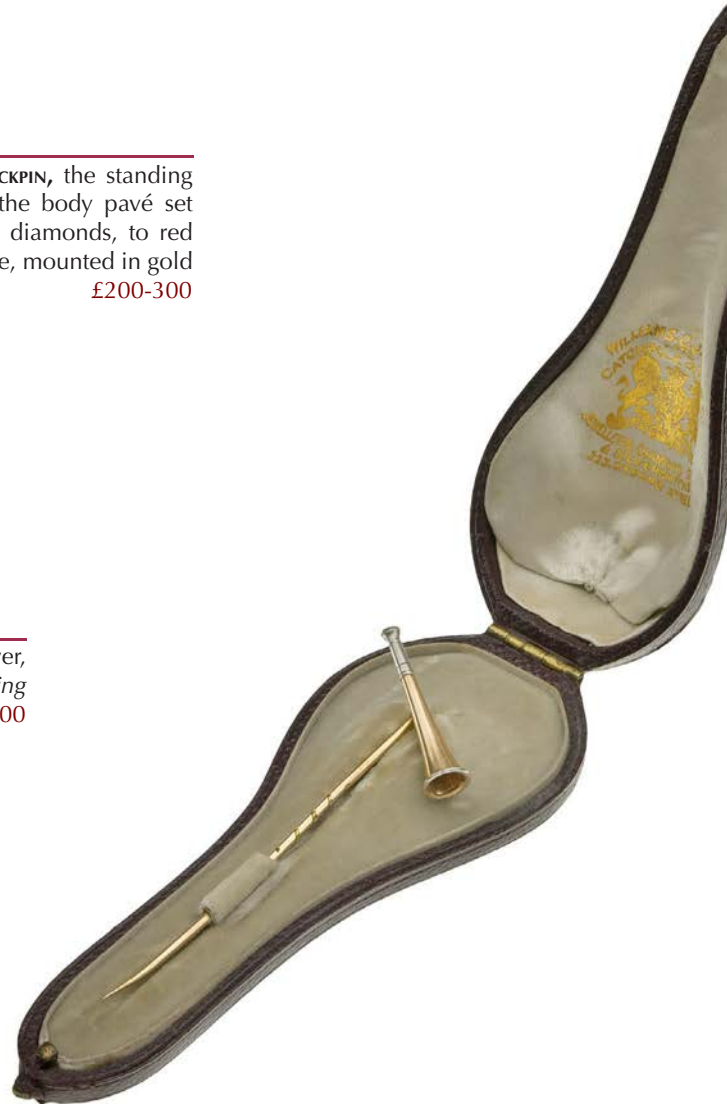


91 A FRENCH SAPPHIRE AND DIAMOND SET STICKPIN, the rectangular scissor-cut sapphire to the centre of a line of smaller similarly cut sapphires, within a hoop surround of small rose-cut diamonds, all millegrain set in white precious metal, to a yellow gold pin bearing French eagle's head assay mark, *stickpin head diameter 10mm.* £100-160



92 A VICTORIAN DIAMOND SET FIGHTING COCK STICKPIN, the standing cock with fighting spurs on his ankles, the body pavé set with graduated old brilliant and rose-cut diamonds, to red enamelled head with rose-cut diamond eye, mounted in gold and silver, *terminal measures 19mm.* £200-300

93 A VICTORIAN HUNTING HORN STICKPIN, modelled in gold and silver, in a semi-fitted case, signed 'Catchpole & Williams', *hunting horn length 28mm.* £150-200



- 94 A VICTORIAN DIAMOND SET INSECT BROOCH, the fly with rose-cut diamond set wings, abdomen and old-cut diamond thorax, mounted to the centre of a small bar brooch between a pearl and rose-cut diamond terminal, mounted in gold and silver, in a semi fitted case, (pearl untested and unwarranted, lacking gemstone eyes), with safety chain, brooch length 36mm. £260-300



- 95 AN EARLY 20TH CENTURY SAPPHIRE AND DIAMOND ARROW SURËTÉ PIN, modelled as an arrow, millegrain set with rose-cut diamonds and calibr -cut sapphires, in two colour precious metal mount, length 51mm. £400-600



- 96 AN ENAMELLED GOLD LOCKET PENDANT, the octagonal hinged double locket pendant with reeded central circular panel and Greek key border in sky blue enamel, stamped '18c', on plain suspensory loop, in hexagonal gilt tooled red leather case, interior silk signed 'Reid & Son', locket width 30mm. £500-700



-
- 97 A SINGLE STONE DIAMOND RING, the old-cut diamond claw set to a plain shank, stamped '18ct & plat', *diamond approximately 0.45 carats, ring size M.* £300-400



-
- 98 A FIVE STONE DIAMOND BAND RING, the slightly tapered polished 18ct gold ring inset with five graduated old brilliant-cut diamonds within navette-shaped setting, mount hallmarked for Birmingham, 1890 and bearing maker's mark 'S D & S Ld', *total diamond weight approximately 0.55 carats, ring size M.* £500-700

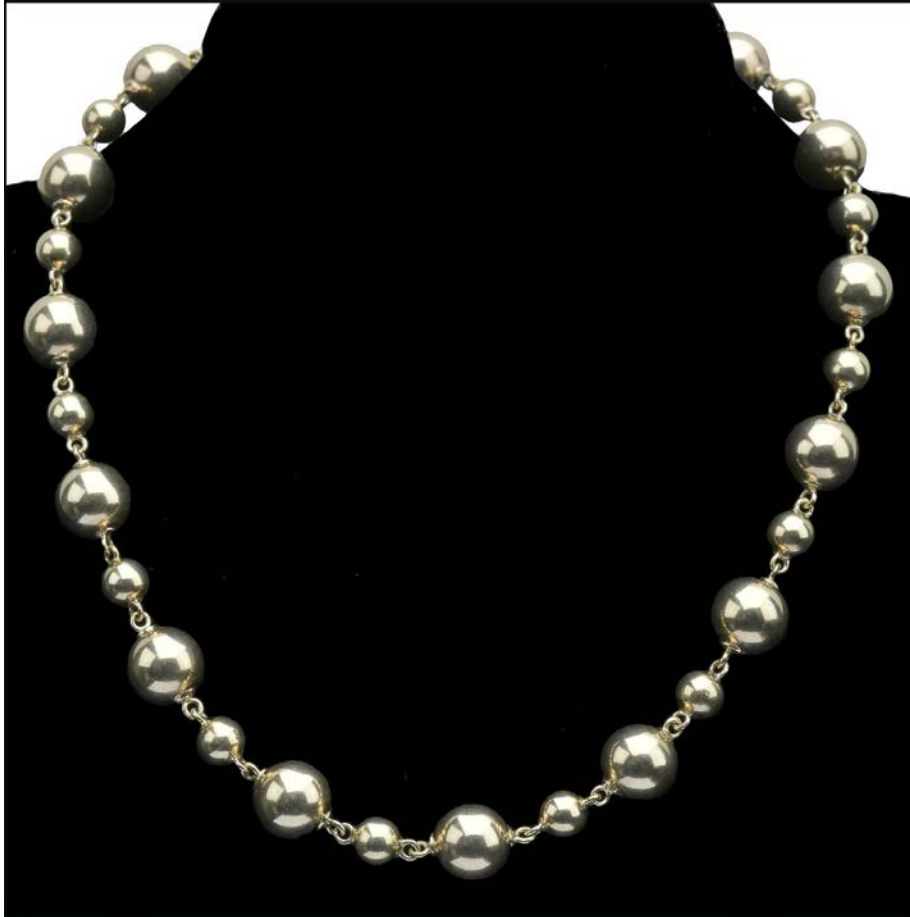


-
- 99 AN EARLY 20TH CENTURY SINGLE STONE DIAMOND RING, the old/transitional cut brilliant in eight claw setting between millegrain edged diamond set shoulders, yellow precious metal shank, stamped '18ct plat', *principal diamond weight approximately 0.5 carats, ring size M.* £600-800



-
- 100 A SINGLE STONE DIAMOND BAND RING, the polished tapered band centred with a collet set brilliant-cut diamond, mount stamped '18ct', *diamond approximately 0.25 carats, ring size N.* £300-400

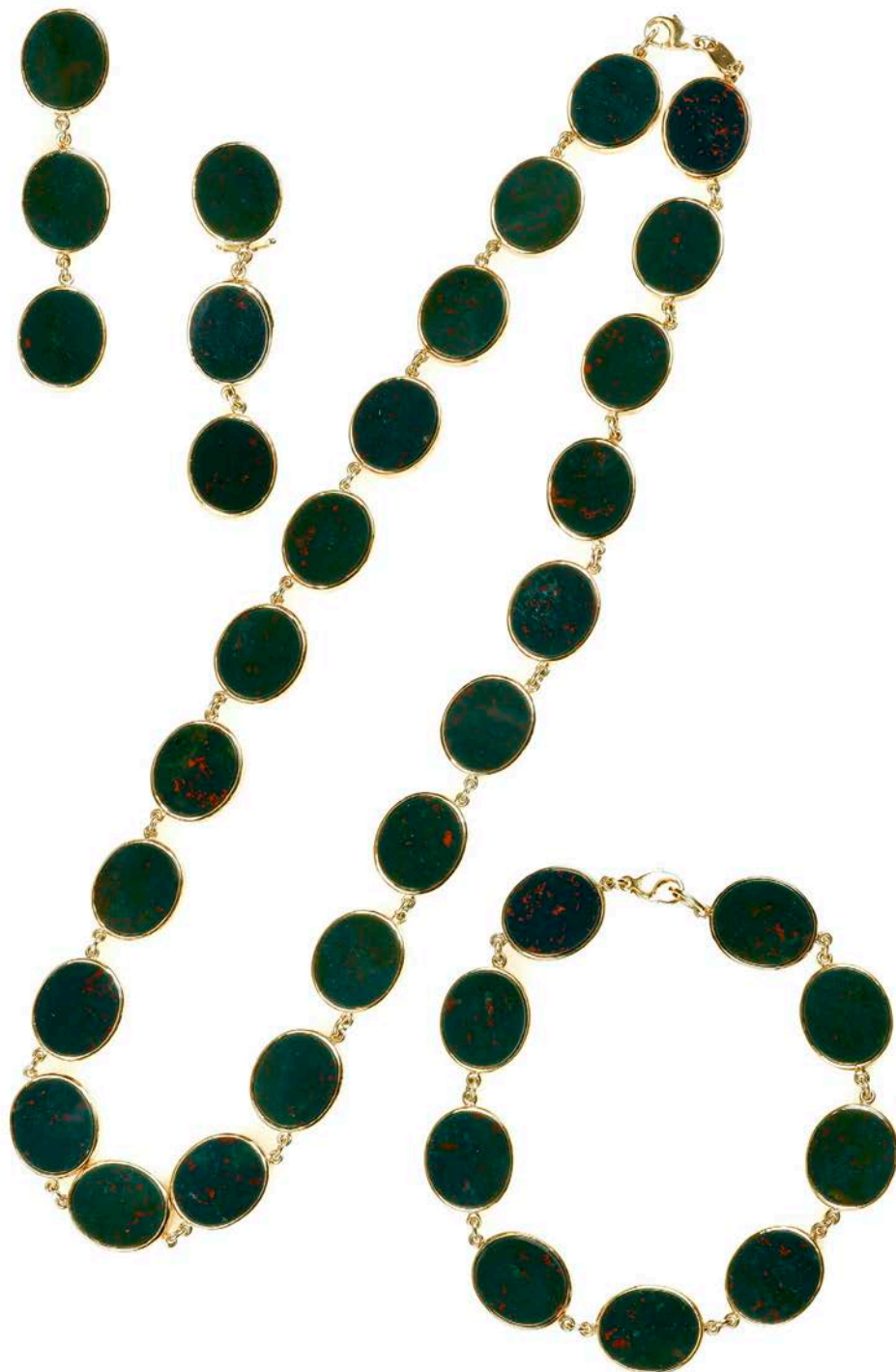




A 9CT GOLD BEAD NECKLACE, BY CROPP & FARR, composed of alternate large and small linked polished spherical gold beads, to a ring bolt clasp, hallmarked for 1989 and with maker's mark 'C&F', length 47cm. **£800-1200**

102 A LARGE CITRINE AND DIAMOND DRESS RING, the fancy cut oval sherry-coloured citrine collet set between shoulders of square-cut diamonds and bordered by brilliant-cut diamonds, yellow precious metal mounted, shank stamped '750', length 2.7cm. **£800-1200**





A 9CT GOLD MOUNTED BLOODSTONE PANEL NECKLACE BRACELET AND EARPENDANT SUITE, BY BOODLE & DUNTHORNE, the rivièrè necklace and matching bracelet and pendant earrings with clip fittings, all composed of linked collet set polished oval bloodstone panels, necklace clasp and earpendants hallmarked and bearing maker's mark, necklace length 44cm. £800-1000

104



AN EMERALD AND DIAMOND RECTANGULAR CLUSTER RING, the step-cut emerald with canted corners collet set within a surround of collet set brilliant-cut diamonds, with green enamel fleur-de-lys motif to the corners and enamel accented fleur-de-lys shoulders, mounted in yellow precious metal, *ring size M*. **£500-700**

105

AN EARLY 20TH CENTURY ALEXANDRITE AND DIAMOND CLUSTER RING, the cushion-shaped mixed-cut alexandrite claw set within a cluster surround of old brilliant-cut diamonds, between trifurcated shoulders, to reeded shank, stamped '18ct', accompanied by a GCS gemmological report, *alexandrite approximately 1.3 carats, ring size O*. **£4000-6000**

The GCS gemmological report dated 3rd August 2018, number 78171-96 confirms that the chrysoberyl, variety alexandrite is of natural origin with no indications of heat treatment.

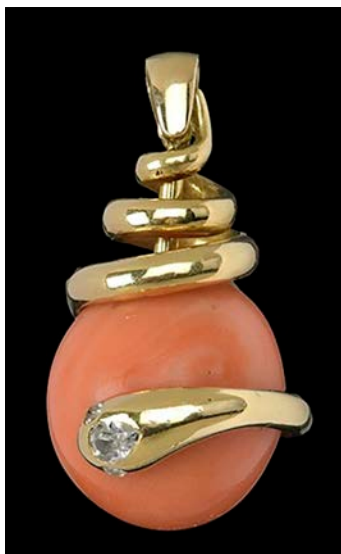


106



A VICTORIAN CARVED SHELL BROOCH AND EARPENDANT SUITE, the pink conch shell brooch carved as a vine leaf, with matching drop earpendants ensuite, brooch width 39.5mm, earpendant length 34.5mm. £100-150

107



A VICTORIAN CORAL AND DIAMOND COILED SERPENT PENDANT, the large spherical *corallium Rubrum* coral bead within a polished coiled serpent mount, the serpent with pear-cut diamond inset head and old brilliant-cut diamond eyes, to later polished tapered bale, pear-cut diamond weight 0.3 carats, pendant length 37.5mm. £300-500

Please note *corallium Rubrum* is listed on CITES and may be subject to import/export restrictions.

108



A GOLD BROOCH, 19TH CENTURY AND LATER, adapted from a chatelaine, comprising a ribbon bow surmount, suspending a vertical drop below encircled by a coronet inset with ruby and sapphire highlights and pearl trios, (pearls untested for natural versus cultured origin), length 7.3cm. £500-600

109



A SINGLE ROW GRADUATED NATURAL PEARL NECKLACE, on knotted silk, the pearl diameters ranging from 6mm-3mm, to an early 20th century marquise-shaped floral rose-cut diamond pierced decorated clasp, two colour precious metal mounted, between two rose diamond set connectors, accompanied by a Report from the World Gemmological Institute, confirming the 96 pearls are of natural saltwater origin, with box signed to the silk 'Wilh. Giese, Hamburg, Jungfernstieg 24', length 43cm. £1200-1500

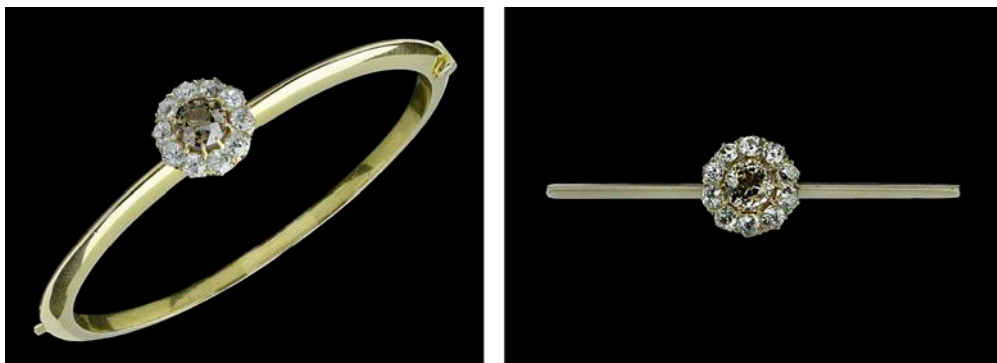
Report number WG 19624110255, dated 25.5.2018.

110

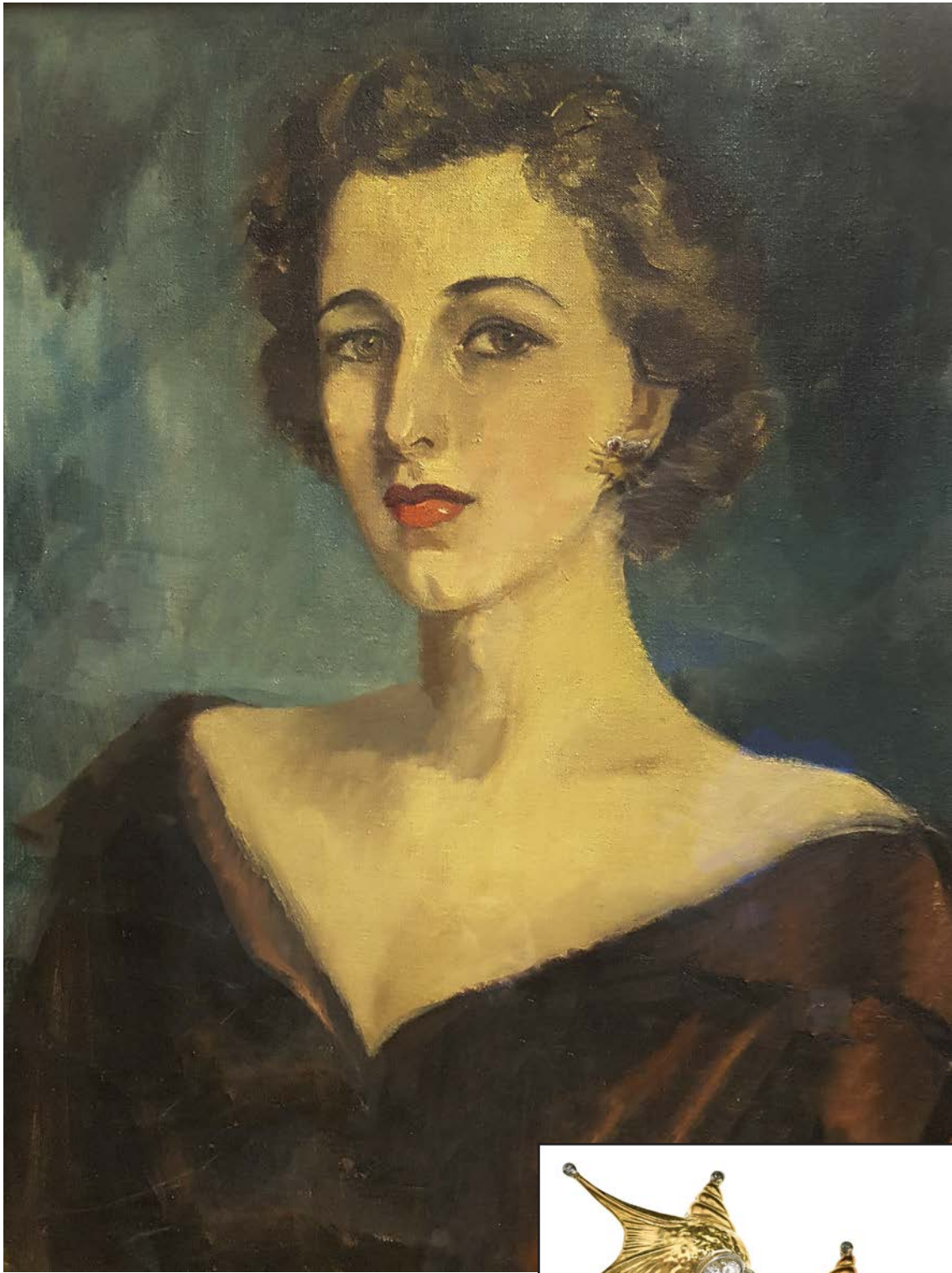


A COLLAR NECKLACE, the slightly articulated, graduated, torque-style collar with bow detail to the front accented with round-cut white stones, stamped '750', length 41cm. £400-600

x111



A LATE NINETEENTH CENTURY GOLD MOUNTED DIAMOND CLUSTER SET BANGLE, ADAPTING TO A BROOCH, the bangle centred with an old brilliant-cut champagne diamond within a cluster surround of smaller white old-cut diamonds, all claw set, mounted to a triangular section hollow hinged bangle, the cluster detaching to fit a knife-edge brooch mount, *principal diamond approximately 1.30 carats, remaining total diamond weight approximately 1.2 carats, internal bangle width 57mm, bar brooch length 55mm.* £2600-3000



A PAIR OF CONCH SHELL RUBY AND DIAMOND SET EARCLIPS, 1940s, modelled as two colour precious metal conch shells accented with graduated old brilliant and single-cut diamonds and mixed-cut rubies, to clip fittings, *length 43mm.* £600-800



Provenance: The illustrated portrait depicts the vendor's mother painted in 1950 wearing the earrings : Miss Judith Currie was the youngest daughter of Captain and Mrs Bertram Currie of Dingley Hall, Market Harborough, Leics and Dunbeath Castle. The portrait was painted by the artist Olive Snell.

-
- 113** A THREE STONE DIAMOND CROSSOVER RING, the three old brilliant-cut diamonds claw set between crossover shoulders, mounted in yellow gold, shank stamped '18ct', total diamond weight approximately 0.5 carats, ring size M. £500-600



-
- 114** A SINGLE STONE DIAMOND RING, the brilliant-cut diamond claw set between bifurcated shoulders with applied leaf-shaped panel detail, mounted in yellow precious metal, shank stamped '18c', diamond weight approximately 0.55 carats, ring size L. £500-700



-
- 115** A DIAMOND SINGLE STONE RING, the old brilliant-cut diamond claw set between stepped shoulders of collet set baguette-cut diamonds, shank hallmarked for 18ct gold and bearing maker's mark 'W&H', principal diamond approximately 0.9 carats, ring size Q. £800-1200



-
- 116** A FIVE STONE DIAMOND BAND RING, the slightly tapered band ring gypsy set with five graduated old brilliant and rose-cut diamonds, mounted in yellow precious metal, ring size N. £150-200



117



A VICTORIAN PERIDOT, PEARL AND DIAMOND BROOCH/PENDANT, the oval mixed-cut peridot collet set within a wreath surround millegrain set with old and rose-cut diamonds, with bouton pearls to the cardinal points, mounted in gold and silver, (pearls untested for origin), width 29.5mm. **£400-600**

118

A VICTORIAN OPAL AND DIAMOND CRESCENT BROOCH, the closed crescent set with graduated oval cabochon opals with pairs of old brilliant-cut diamonds between, mounted in yellow gold, brooch width 32.5mm. **£600-800**



119



A PAIR OF LARGE OPENWORK DIAMOND EARPENDANTS, of tear-drop form, designed as interlocking arcs, the front inset with brilliant-cut diamonds, suspended from a marquise-shaped surmount, on post fittings, white precious metal mounted, unmarked, length 5.5cm. £400-500

120



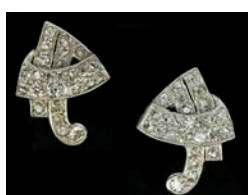
A PAIR OF PRINCESS-CUT SINGLE STONE DIAMOND EARSTUDS, the square diamonds in simple four claw settings, to screw back fittings, mounted in white precious metal, total diamond weight approximately 0.26 carats. £200-300

121

A PAIR OF PEARL AND ROSE-CUT DIAMOND EARPENDANTS, the articulated drops with flared terminals and fleur-de-lys surmounts millegrain set throughout with rose-cut diamonds and accented with central pearls (*untested for origin*), in two colour precious metal mounts, to screw back fittings, earpendant length 27mm. £200-300



122



A PAIR OF DIAMOND SET EARRINGS, the panels of stylised angular scroll design set throughout with rose-cut diamonds, mounted in white precious metal, to screw back fittings, stamped '9ct', earring length 16.5mm. £240-300

-
- 123** A SINGLE STONE DIAMOND RING, claw set with an emerald-cut diamond, in square section polished platinum mount, with AnchorCert Diamond Mini Report card confirming the *Weight 0.73 carats, Colour F and Clarity VVS2, ring size K½*. **£1200-1500**

AnchorCert Report No: BIR5950-004.



-
- 124** A SAPPHIRE AND DIAMOND CLUSTER RING, the oval mixed-cut sapphire claw set within a surround of brilliant-cut diamonds, mounted in two colour precious metal, shank hallmarked for 18ct gold, *ring size M*. **£200-300**



-
- 125** A FRENCH STAR SAPPHIRE, DIAMOND AND PLATINUM RING, the oval cabochon pale blue star sapphire claw set between collet set baguette-cut diamond shoulders, mounted in platinum, bearing French dog's head assay mark and lozenge-shaped maker's mark, *ring size M*. **£1000-1500**





- 126** A DIAMOND SET BAR BROOCH, EARLY-MID 20TH CENTURY, the single-cut diamond set bar spaced with graduated collet set brilliant-cut diamonds, mounted in white precious metal, in semi fitted gilt tooled case by Harvey & Gore, bar brooch length 63mm, principal diamond weight approximately 0.5 carats, total diamond weight approximately 1.6 carats. £600-800

- 127** A GEORGIAN GOLDEN TOPAZ AND HALF PEARL DOUBLE CLUSTER PENDANT, composed of a round cluster with pearl-shaped cluster drop below, each centred with a foil backed golden topaz within a surround of half seed pearls, pinched collet set in yellow gold, to reeded bale, length 38mm. £200-300



- 128** AN EARLY 19TH CENTURY GOLDEN TOPAZ AND CANNETILLE WORK NECKLACE, the graduated panel links each centred with an oval mixed-cut foiled back golden topaz, to an open mesh-link ribbon back chain, in contemporary red leather case, together with an unassociated pair of citrine and marcasite cluster earstuds, necklace length 38cm. £800-1200



129



A PINK TOURMALINE AND SEED PEARL PENDANT, the open whiplash scroll design set throughout with half seed pearls, suspending a central oval mixed-cut pink tourmaline, millegrain set, to a seed pearl set bale, on an unassociated ropetwist chain, stamped '15ct', pendant length 42mm, chain length 45cm. £300-400

130

A PAIR OF BLISTER PEARL AND RUBY EARPENDANTS, BY MURREL BENNETT & Co, the silver-grey blister pearls collet set within knife-edge hoop surrounds with collet set mixed-cut rubies to the cardinal points, on ruby set chain suspensions, to later screw back fittings, mounted in yellow gold, mounts stamped '9ct' and bearing maker's mark, length 30mm.

£400-500



131



AN ART NOUVEAU GARNET AND FRESHWATER PEARL PENDANT, BY MURREL BENNETT & Co, the polished openwork pendant of whiplash scrolls and Celtic knot design with collet set oval mixed-cut garnet to the centre and freshwater pearl drop below, mounted in yellow gold, stamped '9ct' and bearing maker's mark, to plain suspensory loop and fine belcher-link chain, pendant length 45mm. £200-300

132



A LATE VICTORIAN GOLD AND SEED PEARL SET NECKLACE, the articulated centrepiece of foliate design, set throughout with graduated half and seed pearls, mounted in yellow gold, stamped '15ct', to a ropetwist back chain, necklace length 42cm.

£300-500

133



AN EDWARDIAN PERIDOT, SEED PEARL AND GARNET PENDANT, the escutcheon-shaped pendant with oval open latticework centre accented with seed pearls and millegrain collet set round-cut garnets and a peridot, to plain bale, mounted in yellow gold, stamped '9ct', pendant length 34mm.

£160-200

134

A LATE VICTORIAN GOLD MOUNTED ENAMELLED HEART BROOCH, decorated with red guilloche enamel, edged with white and gold spotted enamel, and within an outer border of pearls, the centre applied with diamond and pearl set double heart motif, the reverse enclosing glazed compartment, with hinged pendant mount, length 2.5cm.

£600-800



135



AN EARLY 20TH CENTURY DIAMOND SET BROOCH, modelled as a spray of gorse, millegrain set throughout with rose-cut diamonds, mounted in white precious metal, (unmarked), brooch length 50mm. £600-800

136



A THREE COLOUR 18CT GOLD 'FUSION' RING, BY GEORG JENSEN, composed of three differently coloured interlocking 18ct gold band rings, each bearing maker's mark, numbered '50' and with European convention marks and UK hallmarks, ring size L½. £500-600

137

A DIAMOND SET BOMBÉ RING, the reeded domed design applied with wrythen bands of single-cut diamonds, two colour precious metal mounted, shank stamped '18k', ring size M (leading edge). £400-600



- 138** AN 18CT GOLD AND BLUE ENAMELLED TRIPLE HOOP 'RUSSIAN WEDDING RING', BY CARTIER, the three entwined bands with blue enamel striped decoration, bearing UK import marks for 1970 and maker's mark 'JC' and numbered 'D988', ring size H-I. £400-600



- 139** A DIAMOND SET 'DOUBLE C DECOR' RING, BY CARTIER, the broad reeded three colour torque ring with diamond terminals, signed 'Cartier', stamped '750' and numbered '442507', ring size K-L. £300-500

- 140** A 'HAPPY DIAMOND' RING, BY CHOPARD, the heart-shaped glazed bezel displaying a loose collet set brilliant-cut 'happy' diamond, within a brilliant-cut diamond set border, to a two colour flexible track-link ring, bearing maker's mark and numbered '9755108 82/8402-20', in Chopard case and accompanied by certificate, ring size K. £600-800



-
- 141** A JADE CIRCULAR MULTI-GEM PENDANT ON CHAIN, the outer jade hoop of graduating green to white colouring, inset with a branching motif set with assorted gemstones, on suspensory loop, on fine trace-link chain, stamped '750', (jade untested for treatments), pendant length (including suspensory loop) 4cm. £300-500



-
- 142** Two CHINESE BROOCHES, one set with jade, the other with *corallium Rubrum* coral, the stones carved as Chinese maidens, in yellow precious metal floral mounts, stamped '14k', first brooch length 36mm. £500-600



Please note that coral is covered by CITES legislation and may be subject to import/export and trade restrictions.

-
- 143** A 1950s CORAL AND DIAMOND FLORAL SPRAY BROOCH, modelled as a chrysanthemum spray, the carved *corallium Rubrum* coral flowerhead above two colour stem and leaves accented with single and baguette-cut diamonds, mount stamped '18k', brooch length 84mm. £1600-2000

Please note that coral is covered by CITES legislation and may be subject to import/export and trade restrictions.





144



A GENTLEMAN'S 18CT GOLD DRESS SET, comprising a pair of domed plain oval panel cufflinks with figure-of-eight connections and two short and one tall dress studs, all hallmarked for Birmingham, 1900 and bearing maker's marks 'G.H.J.&Co', together with a further pair of cufflinks, the torpedo-shaped scroll engraved terminals with belcher-link chain connections, stamped '9ct'. £200-300

145



A SMALL COLLECTION OF JEWELLERY, including a pair of early 20th century 18ct gold wedding bands, both initialled and dated '22-8-28', together with an 18ct gold wedding band, hallmarked for Birmingham 1878, with geometric patterned exterior, a St Christopher pendant, stamped '14k', a costume jewellery pendant and two watch keys. £150-200

146



A SMALL GROUP OF BANGLES AND BRACELETS, comprising a polished 'slave' bangle, stamped 'M&M' and '9ct', a hinged bangle in the form of bamboo, stamped '9,375', and two curb-link chain bracelets, the links stamped '18', to 9ct gold heart-shaped padlock clasps. £300-400

- 147** A GENTLEMAN'S MOTHER O' PEARL AND SAPPHIRE DRESS SET, comprising four buttons, a pair of cufflinks with chain connections and two studs (one lacking head), each of octagonal mother o' pearl panels within reeded border and centred with a millegrained collet set round-cut sapphire, the two colour mounts stamped '18ct & pt', in fitted case signed 'Hunt and Roskell Ltd'.



- 148** A PAIR OF GOLD MOUNTED REVERSE PAINTED CRYSTAL CUFFLINKS, the oval cabochon crystals painted to depict jockeys in different coloured silks on galloping horses, against mother o' pearl backs, collet set in closed back settings, with belcher-link chain connections, mounts stamped '18', terminals measure 17mm x 12mm.



- 149** A PAIR OF SILVER GILT MOUNTED LAPIS LAZULI AND EMERALD SET BATON CUFFLINKS, the oval cabochon lapis lazuli panels centred with collet set oval cabochon emerald accents, to chain connections and baton backs with cabochon emerald terminals, silver gilt mounted, stamped '925', (lapis lazuli untested for treatment), oval lapis panels measure 18mm x 13mm.

- 150** A PAIR OF 18CT GOLD AND PLATINUM CUFFLINKS, the tonneau-shaped panel terminals set with polished onyx within millegrained rose-cut diamond set borders, to belcher-link chain connections, the mounts stamped '18ct & pt', one cufflink inscribed '1923' to the reverse of one panel and '1933' to the other, in a signed Hunt & Roskell case, panels measure 12.5mm x 11mm.



151



A MOONSTONE SPECTACLE SET RIVIÈRE NECKLACE, the continuous line of slightly graduated round and oval cabochon moonstones in linked spectacle settings, necklace length 63cm. £200-300

152



A SMALL GROUP OF SAPPHIRE SET JEWELLERY, comprising a pair of cabochon sapphire cluster earrings, three dress rings of various designs, and a sapphire, diamond and yellow gem set flower pendant, all mounted in 9ct gold, all hallmarked. £240-300

153



A VICTORIAN AGATE MEMORIAL SIGNET RING, the eschuteon-shaped banded agate panel set between engraved shoulders, with glazed hairwork panel verso, together with two silver hinged bangles with engraved aesthetic decoration and a silver locket brooch with a coiled serpent mount (lacking central section). £250-300



154 A VICTORIAN GEM SET PENDANT, the open scrollwork design with bird and flowerhead details, accented with garnets and green garnet topped doublets, mounted in yellow gold, to flared chain stamped '9ct', suspended on a 9ct gold fetter and belcher-link chain, pendant length 53mm. £300-500



155 A PAIR OF INDIAN LAPIS LAZULI CHANDELIER EARPENDANTS AND AN INDIAN RUBY DRESS RING, the earpendants composed of three tiers of semi-spherical lapis lazuli beads, each suspending a fringe of freshwater pearls, with tear-drop bead suspended below, on later screw fittings, together with a ruby and pearl dress ring, (lapis lazuli untested for treatment), earpendants length 6.3cm, ring size P. £260-300

156 A PAIR OF 18CT GOLD EMERALD AND DIAMOND CLUSTER EARSTUDS, the tiered target clusters of round-cut emeralds and brilliant-cut diamonds claw set in 18ct white gold, stud fittings hallmarked, in Plante & Johnson case, cluster diameter 12mm. £200-400



157



A CITRINE AND DIAMOND RING, the cushion-shaped mixed-cut citrine inset to the table with a collet set old brilliant-cut diamond, the citrine claw set in yellow precious metal, *diamond weight approximately 0.12 carats, ring size L.* £300-500

158

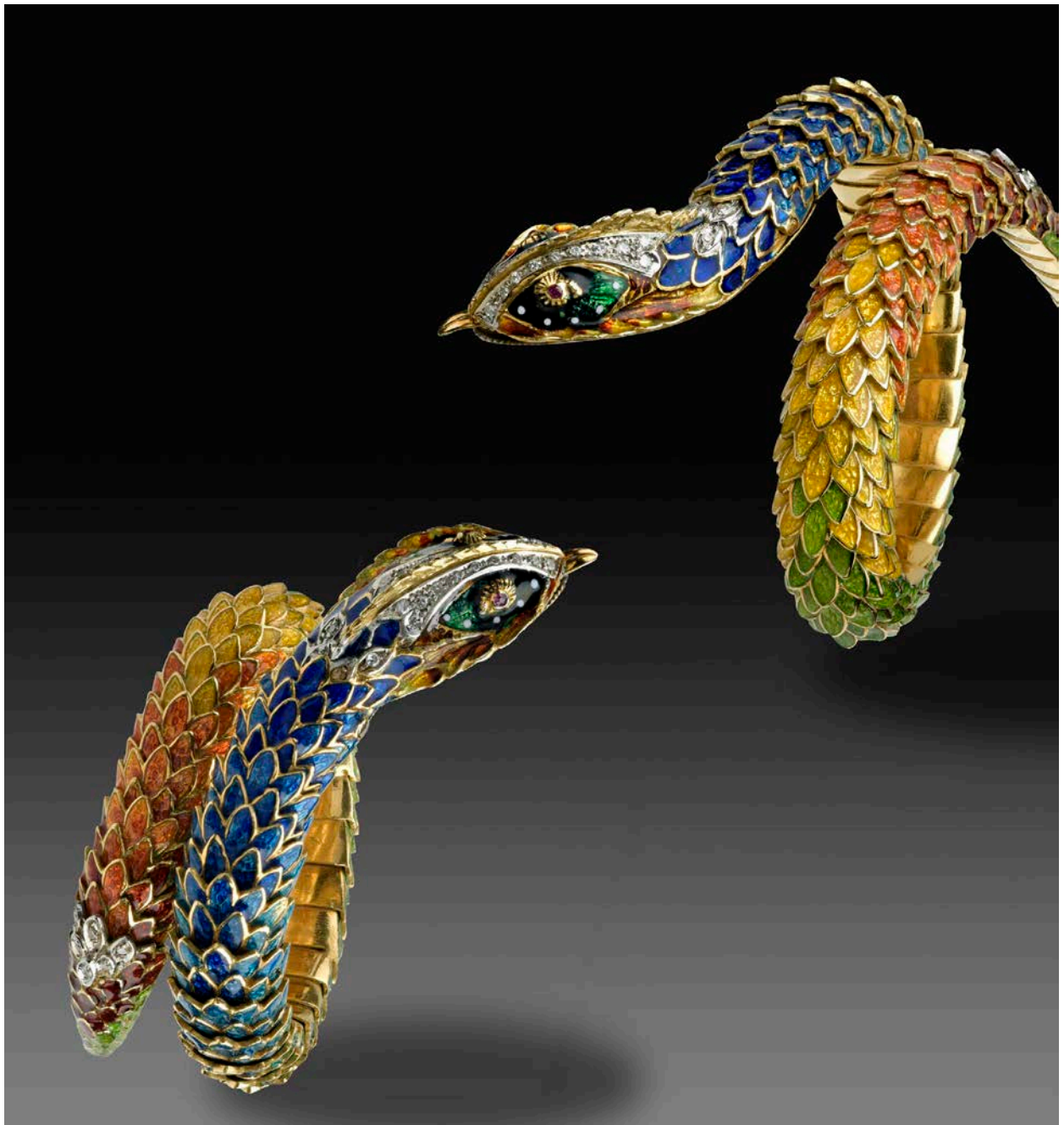
A CITRINE AND DIAMOND CLUSTER DRESS RING, CIRCA 1970s, the circular-cut sherry coloured citrine in claw mount, within a surround of brilliant-cut diamonds, to wirework basket setting, white precious metal mounted, shank of split design, unmarked, *ring size M½.* £500-700



159



AN ENAMEL AND DIAMOND FLOWER BROOCH, modelled as a tulip bloom, the petals decorated with shaded yellow-orange-red basse-taille enamel and accented with lines of brilliant-cut diamonds, to a green basse-taille enamel stem, mounted in yellow precious metal, stamped '750', to double pin fitting, *length 60mm.* £500-700



AN ITALIAN ENAMELLED SERPENT BANGLE, the articulated sprung bangle modelled as a coiled serpent with vari-coloured basse taille enamel scales, the head, neck and tail accented with single-cut diamonds and with round-cut ruby eyes, mounted in yellow precious metal, stamped '18kt, Italy', overall length 25cm. £2500-3500

161



A PAIR OF DIAMOND HOOP EARRINGS, 18ct white gold mounted, the hinged hoop claw set to the front and inner back with brilliant-cut diamonds, one hoop stamped 'D116', giving the total diamond weight of 1.16 carats, hoop diameter 3.5cm. £800-1000

162



A DIAMOND HALF HOOP RING, the eight slightly graduated brilliant-cut diamonds in square claw settings, mounted in 18ct white gold, shank hallmarked and bearing maker's mark 'BR Ld', total diamond weight approximately 0.5 carats, ring size O. £200-300

163

A DIAMOND PANEL RING, the rectangular ring mount with central vacant setting, baguette-cut diamond shoulders, and brilliant-cut diamond border, white precious metal mount, unmarked with unassociated loose step-cut green tourmaline, ring size O. £300-400



164



A DIAMOND SET ETERNITY BAND, the band set throughout with brilliant-cut diamonds in square claw settings, mounted in white precious metal, total diamond weight approximately 1.25 carats, ring size R. £400-500

-
- 165** A GEM SET CROSSOVER DRESS RING, the crossover arms terminating in claw set step-cut green tourmaline and yellow sapphire, to shoulders of channel set graduated baguette-cut diamonds, mounted in yellow precious metal, shank stamped '750', ring size N. £400-600



-
- 166** AN EMERALD AND DIAMOND RING, the rectangular cushion-shaped mixed-cut emerald claw set between brilliant-cut diamond set shoulders, mounted in yellow precious metal, emerald approximately 5.5-6 carats, ring size Q. £3000-5000



167



TWO 18CT GOLD SIGNET RINGS, the first with rectangular panel to band shank with reeded shoulders, the second with oval panel between tapered reeded shoulders, both bearing crest of the head of an eagle clasping a torch in its beak and both hallmarked, ring sizes $P\frac{1}{2}$ and I respectively. £300-400

168



SIX ASSORTED WEDDING BANDS, including two 18ct gold wedding bands with stylized foliate and floral engraved detail, two heavy plain 22ct gold wedding bands, a further 22ct gold wedding band with faceted exterior and a two colour band with yellow exterior and white interior stamped 'platinum'. £240-300

169



FOUR HARDSTONE INSET GENTLEMEN'S SIGNET RINGS, including a shield-shaped carnelian example and an oval onyx example, both mounted in 9ct gold, an oval lapis lazuli example and an oval bloodstone example with a later 22ct gold shank. £340-400

170



A 9CT GOLD ALBERT CHAIN, the graduated curb-link chain with swivel clasp terminals and central T-bar, partially hallmarked, chain length 39.5cm, weight 27gm. £260-300

171



A COIN SET RING, the Roman style coin claw set in yellow precious metal mount, the shoulders modelled as male and female nudes, ring size H. £400-600

172



A TOURMALINE CLUSTER RING, the oval mixed-cut green tourmaline claw set above a textured cluster surround inset with small single-cut diamonds, mounted in two colour precious metal, shank hallmarked for 18ct gold, ring size O½. £200-300

173 A PAIR OF HOOP PANEL EARRINGS, the broad half hoops in yellow precious metal, inlaid with decoration depicting a camel and palm trees beneath a blazing sun, to stud and hinged back fittings, stamped '750', earring length 21mm. £300-400





174 A LATE VICTORIAN DIAMOND SET MOURNING BROOCH/PENDANT, the domed oval onyx panel supporting a floral spray motif set with graduated old brilliant and rose-cut diamonds, collet set within a mount with palmette detailed border highlighted with black enamel, with glazed hairwork panel verso, the mount inscribed to the reverse 'James Whitehouse, Obt April 28th 1890', in fitted case signed 'Wm Wray & Son, 38 New St, Birmingham', brooch length 58mm, total weight of old brilliant-cut diamonds approximately 3 carats. £3000-4000

175



A 19TH CENTURY DIAMOND SET MOURNING RING, the tapered band ring set with three graduated old brilliant-cut diamonds spaced by pairs of rose-cut diamonds, all in square mounts accented with black enamel, between black enamel anthemion shoulders, mounted in yellow gold, stamped '18', principal diamond approximately 0.3 carats, ring size N. £300-400



176



A VICTORIAN SILVER SCOTTISH THEMED BROOCH, modelled as a stag's head with textured detail and cabochon red stone eyes, between the antlers a spray of thistles with faceted citrine heads, bearing engraved registration mark to the reverse for class I, parcel 8, 7th February 1873, in fitted case signed 'P. Westren, 27 Frederick Street, Edinburgh', brooch length 57mm. **£80-100**

177

A RUBY AND DIAMOND CLUSTER RING, the round-cut ruby claw set within a cluster surround of brilliant-cut diamonds, between fleur-de-lys shoulders, mounted in yellow and white precious metal, shank stamped '18ct', ring size P½.

£800-1000

178



A RUBY AND DIAMOND SET CURB-LINK BRACELET, the bracelet composed of linked claw set alternate brilliant-cut diamonds and oval mixed-cut rubies, to a textured flattened curb-link back chain, mounted in yellow precious metal, box clasp stamped '18k', total diamond weight approximately 2 carats, bracelet length 19cm. **£1000-1200**

A PAIR OF RUBY AND DIAMOND CUFFLINKS, each terminal comprising a hoop of mixed-cut rubies mounted in yellow precious metal and applied with a white precious metal stag or ibex pavé set with single-cut diamonds and with ruby eyes, adapted from buttons with later connectors, *terminal diameter 17.5mm.*

£1500-2000

Provenance: The Collection of **Viscountess De Vesci**, thence by descent.



180 **A RUBY AND DIAMOND CLUSTER RING**, the oval mixed-cut ruby in four claw setting, within a surround of 13 brilliant-cut diamonds, to 18ct white gold mount, shank engraved '750', and engraved 'R3.47' and 'D.93', *giving the weight of the ruby as 3.47 carats, and total weight of diamonds as 0.93 carats, ring size K.*

£2000-3000



181



AN EARLY 20TH CENTURY DIAMOND AND RUBY BROOCH, centred with a round-cut ruby within a bow design, the outline set throughout with old-cut diamonds, white precious metal mounted, length 41mm. £1200-1500

182



AN EARLY 20TH CENTURY OPENWORK RECTANGULAR DIAMOND BROOCH, set throughout with old-cut and brilliant-cut diamonds, with cartouche-shaped detail to either side, white precious metal mounted, (unmarked), total diamond weight approximately 3.4-3.5 carats, length 5.4cm. £1500-1800

183

A VICTORIAN DIAMOND SET HORSESHOE BAR BROOCH, the horseshoe composed of old brilliant-cut diamonds, pinched collet set, to the centre of a curb-link chain style bar brooch, (adapted), brooch length 47mm, total diamond weight approximately 0.9 carats. £200-300



184



A SAPPHIRE AND DIAMOND TWO STONE BAR BROOCH, the oval mixed-cut sapphire and old-cut brilliant diamond claw set between crossover shoulders, to plain bar brooch, mounted in yellow gold, diamond approximately 0.4 carats, brooch length 53mm. £160-200

185



A DIAMOND SET NECKLACE WITH RIBBON BOW CENTREPIECE, adapted from 19th century elements, the ribbon bow centrepiece set throughout with old brilliant and old mine-cut diamonds, suspending millegrained collet set diamond drop below, between two smaller scrolled links suspending flowerhead cluster drops below, similarly set throughout with old brilliant-cut diamonds, mounted in gold and silver, to a gold belcher-link back chain, necklace length 55cm.

£1200-1500

186



A VICTORIAN DIAMOND SPRAY BROOCH, the foliate spray of leaves, flowers and buds set throughout with graduated cushion-shaped old brilliant-cut diamonds, with rose-cut diamond accents, the principal flowerhead centred with a pinched collet set brilliant-cut diamond, mounted in gold and silver, principal diamond weighs approximately 0.85 carats, width 45mm.

£1500-1700

-
- 187** A FIVE STONE DIAMOND RING, the five graduated old brilliant-cut diamonds claw set, mounted in yellow precious metal with scrolled gallery, shank stamped '18ct', total diamond weight approximately 1 carat, ring size N. £200-300



-
- 188** AN AQUAMARINE DRESS RING AND A PASTE SET RING, the first centred with an oval mixed-cut aquamarine, within a pierced work broad setting, to trifurcated reeded shoulders, and a sherry coloured paste set ring, within scroll engraved fancy mount, first ring size R, second O. £260-360



-
- 189** AN OPAL, RUBY AND DIAMOND CLUSTER RING, CIRCA 1970s, the central opal claw set within a surround of alternating marquise-cut rubies and brilliant-cut diamonds in raised wirework setting, white precious metal shank stamped 18ct', ring size N. £300-500



-
- 190** A FIVE STONE DIAMOND RING, the five graduated old brilliant-cut diamonds claw set, shank stamped '18ct & plat', total diamond weight approximately 1.5 carats, ring size R½. £700-900



-
- 191** A TWO ROW BERYL BEAD FRINGE NECKLACE, the two row necklace of small irregular aquamarine beads spaced with small faceted yellow precious metal beads and graduated irregular faceted pear-shaped green beryl bead drops, to an S-shaped clasp, stamped '750', necklace length 39cm. £500-700



192



- A FRENCH NEPHRITE AND DIAMOND BOMBÉ DRESS RING, the bombé design of polished nephrite jade in set with collet set brilliant-cut diamonds, mounted in yellow gold, with lozenge-shaped maker's mark, (jade untested for treatments), ring size L. £600-800

-
- 193** AN EMERALD AND DIAMOND HEAVY BAND RING, the broad tapered band with raised ropetwist borders and applied ropetwist lattice detail, accented with raised collet set brilliant-cut diamonds, to central oval cabochon emerald, mount stamped '18k', ring size N (leading edge). £300-500



194



A PAIR OF EMERALD AND DIAMOND CLUSTER EARRINGS, the step-cut emerald and brilliant-cut diamonds clusters all claw set in white precious metal, stamped '750', to clip back and post fittings, accompanied by an IGC report, *cluster length 16mm*.

£3000-5000

The International Gemmological Centre Report ref PT-1805714, dated 31st May 2018, states that the emeralds have a combined weight of 4.4 carats and are of Colombian origin, and the 28 diamonds have a combined weight of 2 carats, with a colour grade of G-H and a clarity grade of VVS-VS.

195



A DIAMOND AND EMERALD FLOWER BROOCH, centred with an oval mixed-cut emerald claw set within a cluster surround of six brilliant-cut diamonds, surrounded by six shaped petals pavé set with further brilliants and spaced by round-cut emeralds, mounted in yellow and white precious metal, to double pin fitting, *brooch width 29mm*.

£1200-1500



AN OVAL SHAPED OLD-CUT SINGLE STONE DIAMOND RING, the diamond claw set to a yellow gold mount, stamped '18ct' and bearing maker's mark 'R.C.M.', diamond approximately 3.9 carats, ring size O½. £6000-8000

197



A **SAPPHIRE AND DIAMOND RING**, the oval mixed-cut sapphire in raised claw setting between pavé set brilliant-cut diamond shoulders, mounted in yellow precious metal, stamped '750', ring size J. **£600-800**

198

A **LATE VICTORIAN 18CT GOLD MOUNTED SAPPHIRE AND DIAMOND SET CHECKERBOARD RING**, alternately set with sapphires and old-cut diamonds, in two row design, (one diamond replaced with a brilliant-cut, one sapphire replaced and untested as natural versus synthetic), shank hallmarked for Birmingham 1899, total diamond weight approximately 1 carat, ring size Q. **£700-900**



199



A **SAPPHIRE AND DIAMOND CLUSTER RING**, the round mixed-cut sapphire claw set within a surround of single-cut diamonds, yellow precious metal mounted, with partial hallmark, ring size L½. **£320-400**

200

A **DIAMOND HALF ETERNITY RING**, channel set with princess-cut diamonds, to polished shank, yellow precious metal mounted, shank stamped '14k', ring size L. **£220-300**



201



A PAIR OF SAPPHIRE AND DIAMOND HOOP EARRINGS, the sprung hinged hoops of polished ropetwist form, to channel set calibré sapphire and pavé set brilliant-cut diamond heads, mounted in yellow precious metal, stamped '750', diameter 32.5mm. £600-800

202

A LARGE FRENCH 1940s SAPPHIRE AND DIAMOND ODEONESQUE RING, centrally set with a rectangular step-cut sapphire, with cut corners, within an angular two colour precious metal mount, set with two rows of brilliant-cut diamonds, to broad polished tapering shank, French guarantee marks of eagle's head and dog's head, sapphire approximate dimensions 8.55mm x 6mm x 6mm, ring size M.

£800-1200





A 19TH CENTURY FRENCH DIAMOND FLORAL 'EN TREMBLANT' CONVERTIBLE SPRAY BROOCH, BY DEBACQ & CIE, CIRCA 1880s, the floral spray set throughout with old-cut and rose-cut diamonds, the two flower heads mounted 'en tremblant', amidst foliage with ribbon tie to the stems, gold and silver mounted, together with a gold multi-petal sunflower and diamond set hinged bangle; the flower heads within the brooch and bangle being detachable and interchangeable, the case lining containing the original fittings to adapt the brooch to a foliate spray, the two flower heads into pendants or individual brooches and three hairpins to create hair ornaments; the brooch stamped with lozenge maker's mark and French eagle's head guarantee marks; also included, the original hand drawn jeweller's pen and ink sketch of the brooch depicting the two alternate versions of the brooch (one as a floral spray, the other as a smaller foliate spray - the two shaded leaves in the second image showing the inclusion of an additional foliate section), the suite contained in a maroon leather and gilt tooled case, the interior lined with maroon velvet, silk and taffeta and signed 'Debacq & Cie, Rue Réaumur, 41 Paris', length of brooch 9.5cm, bangle inner diameter 5.7cm. £4000-6000

The French jewel house **Debacq & Cie** first started business in 1812, at 358 rue de la Port St Denis, Paris, when **Raymond Sabe** set up a jewellery trading business. By 1838, Raymond passed his jewellery company to his three nephews, **Felix, Victor and Pierre Eugène Sabe**, and they were joined by **Sincie Debacq**, the husband of Raymond Sabe's niece. Between 1838-1851, the company traded as Debacq & Sabe, moving to premises at 29 rue Royale Saint-Martin.

From 1851, Sincie Debacq decided to work independently but he joined forces again with Pierre Eugène Sabe in 1859. By now the company was established in 41 rue Réaumur and business was expanding. By 1868, there were again changes, as Sincie bought out his partners, and started a new association with his sons-in-law Victor Peyret and Camille Batcave. The company was now trading under **Debacq & Cie**, the name which was to continue until 1899. These were the years of their greatest success, creating fashionable diamond jewels and reflecting current trends. One of their most popular lines was their diamond floral suites, incorporating the taste for convertible jewels, where a piece could be adapted for wear in different ways, and often incorporating flowers set 'en tremblant', the flower heads spring mounted to give the effect of 'dancing in the breeze'.

After Sincie's death in 1906, the firm again changed management, continuing as Debacq, Peyret & Fils, but with the onset of the First World War, business became increasing difficult. The company struggled on but by 1951, had ceased trading. In 1960 there was an attempt to revive the company, but it was finally sold in 1980.





A STAR DIOPTASE AND DIAMOND RING, BROOCH AND EARRING SUITE, each centred with a collet set cabochon black star diopside, within a rectangular hoop frame set with single-cut diamonds, mounted in two colour precious metal, stamped '750', brooch length 34mm, ring size W. £1500-2000



205 AN 18CT WHITE GOLD MOUNTED DIAMOND LINE BRACELET, claw set throughout with brilliant-cut diamonds, clasp stamped '18k WG' and '2.01' for 2.01 carats, length 17cm. £1000-1200



A FRENCH EARLY 20TH CENTURY GOLD POLO MALLET BROOCH, modelled as a pair of polo mallets with a pearl ball, the reverse numbered '5749', with lozenge maker's mark and guarantee marks, together with an Edwardian pendant of octagonal outline, with pearl details, (central section missing), on suspensory loop (*all pearls untested for natural versus synthetic origin*) and a large quantity of costume jewellery contained in Jewellery box, *first brooch length 4.8cm, second length (excluding suspensory loop) 3cm.*

This lot is being sold on behalf of the charity PACE, an Aylesbury based charity and school providing intensive input for children with motor disorders such as Cerebral Palsy. (Charity no. 1011133). The items have been kindly donated and are being offered for sale at No Reserve.

A DIAMOND SET BRACELET, composed of two textured flattened ropetwist chains, spaced with seven graduated brilliant-cut diamonds in raised square claw settings, mounted in white precious metal, clasp stamped '585', bracelet length 18.5cm, total diamond weight approximately 0.3 carats.

£300-500



208



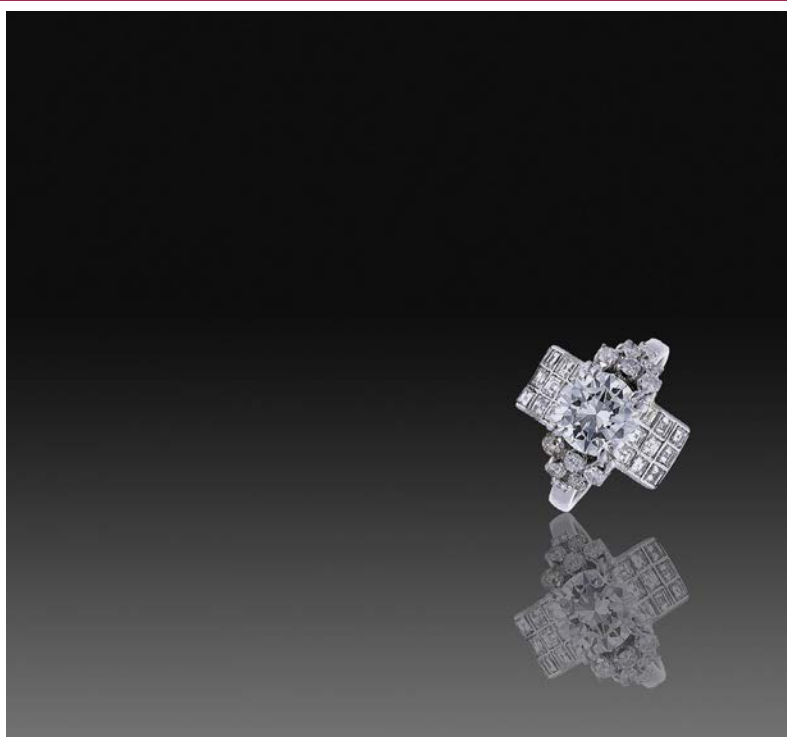
A MIKIMOTO CULTURED PEARL NECKLACE AND EARCLIPS, the single strand of uniform cultured pearls to a pierced white precious metal clasp with cultured pearl accent, together with a pair of cultured pearl earrings of foliate design, mounted in yellow precious metal to screw back fittings, all bearing Mikimoto maker's mark and stamped 'k14', necklace length 44cm.

£200-300

209

A DIAMOND DRESS RING, centred with a raised brilliant-cut diamond in four claw setting, flanked by angled panels of square-cut diamonds, and stepped shoulders of small brilliants, white precious metal mounted, principal diamond approximately 1.5 carats, ring size M.

£2000-3000



210



A GROUP OF FOUR VICTORIAN BROOCHES, comprising a banded agate cameo memorial brooch, the cameo depicting a funerary urn beneath a weeping willow tree, in a gold escutcheon-shaped mount decorated with black enamel, hair work panel verso; a hairwork panel and half pearl cluster memorial brooch, inscribed verso; a square amethyst and half pearl cluster brooch and a domed boss brooch with central *corallium Rubrum* coral cabochon, stamped '15ct'. £200-300

Please note coral is covered by CITES legislation and may be subject to import/export restrictions.

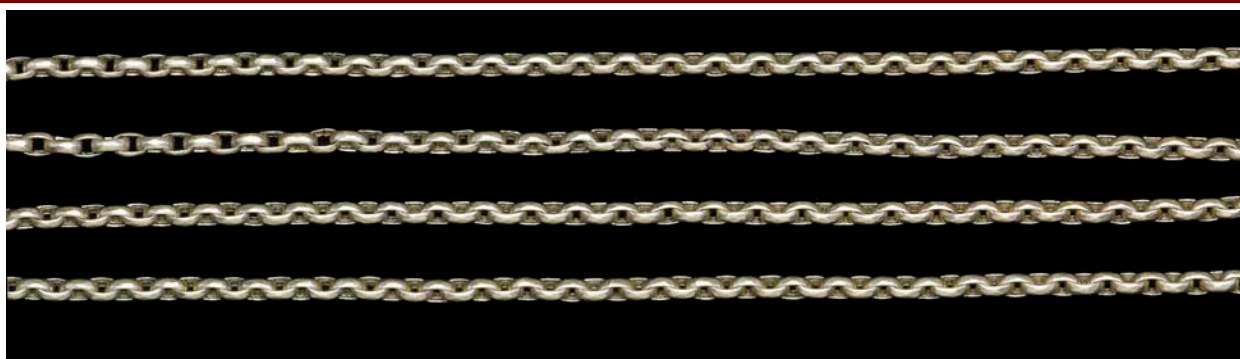
211



A COLLECTION OF ASSORTED ANTIQUE RINGS, including a marquise panel ring set with half pearls and a cabochon turquoise, a *corallium Rubrum* coral ring, a hardstone portrait cameo ring, etc. £200-300

Please note that coral is covered by CITES legislation and may be subject to import/export and trade restrictions.

212



A BELCHER-LINK GUARD CHAIN, in yellow precious metal, unmarked, to a swivel clasp, length 95cm.

£340-400

213



A GARNET AND CHRYSOBERYL PENDANT NECKLACE, the Victorian cluster of collet set mixed-cut garnets and chrysoberyls suspending a similarly set drop below with foliate surmount, on double chain suspension, to a matching belcher-link back chain, (adapted), *pendant length 47mm.* £260-360

214



TWO HALF PEARL SET RINGS, both 19th century, the first, set with graduating half pearls with rose-cut diamond points between, within pierced scrollwork setting, hallmarked for Birmingham 1890, the second of half hoop design, and with scroll carved shank, *first ring size P, second O.* £260-360

215



A VICTORIAN HALF PEARL AND RUBY RING, the half pearl and mixed-cut ruby flowerhead cluster between mixed-cut ruby set flared shoulders, mounted in yellow gold, with locket panel to reverse of bezel (lacking glass), *ring size L½.* £300-500

216



A VICTORIAN GOLD FOUR ROW ALBERTINA, comprising two ropetwist and two pierced box-link chains, with scroll engraved panel terminals and scroll engraved slide, with a ropetwist chain extension to one end and a tassel drop, *Albertina length 25.5cm.* £300-400

217



A DIAMOND AND WHITE GOLD NECKLACE, the V-shaped centrepiece set with graduated brilliant-cut diamonds, with central claw set brilliant-cut diamond drop, mounted in white precious metal to a flattened ropetwist back chain, clasp stamped '750', necklace length 44cm, principal diamond approximately 0.35 carats. £700-900

218



A PAIR OF SAPPHIRE AND DIAMOND SET EARSTUDS, by **CARTIER**, the square panel studs with geometric decoration, each set with four round-cut sapphires and three brilliant-cut diamonds, mounted in white precious metal, signed, stamped '750', bearing French eagle's head assay marks and numbered '946556', earstud width 8mm. £600-800

219

A DIAMOND SET HINGED BANGLE, the front set with a line of graduated claw set brilliant-cut diamonds with rose-cut diamond set ribbon loop motifs between, mounted in polished white precious metal, stamped 'K18', principal brilliant-cut diamond approximately 0.35 carats, internal bangle width 58mm. £600-800





A PAIR OF EARLY 20TH CENTURY ART DECO DIAMOND AND SAPPHIRE EARPENDANTS, the pierced millegrained flared panel drops set with single-cut diamonds and scissor-cut sapphires around principal round cabochon sapphires, the panels suspending a fringe of graduated drops below, alternately sapphire and diamond set, to millegrained collet set old brilliant-cut diamond surmounts, mounted in white precious metal, with stud fittings, length 55mm. £3000-4000

221



AN EARLY 19TH CENTURY GOLD AND BLACK ENAMEL MEMORIAL RING, the broad gold band with the words 'IN MEMORY OF' in black enameled Gothic script, between black enamel borders, inscribed to the interior 'Joshua Ingham ob 4 Jan 1816 alt 43', bearing maker's mark SG in oval punch and hallmarked for London, 1815, ring size P (leading edge). £240-300

222

A MID VICTORIAN BANDED AGATE AND DIAMOND SET MEMORIAL PENDANT, 1860s, the pendant centred with a cabochon banded agate, collet set within a border of silver and gold mounted old-cut diamonds, suspending three diamond set drops below, the reverse with glazed locket compartment, enclosing a lock of blond hair, and inscribed to the border: 'Vere Fane died 18th Jan 1863 aged 78' and 'Eliz.th Fane died 5th June 1865 aged 80', the pendant suspended from a diamond set bale, together with an unassociated graduated banded agate bead necklace, to plain barrel clasp stamped '9c', contained in semi-fitted case by R & S Garrard & Co, pendant length (including bale) 6.3cm, necklace length 41cm. £2200-3000

Vere Fane (1785-1863) was the fourth son of the Hon. Henry Fane, the 8th Earl of Westmorland, of Fulbeck Hall near Grantham, Lincs, and Anne, daughter of Edward Buckley Batson. He was elected MP for Lyme Regis between 1818-1826, and Mayor of the town between 1830-31. He moved into banking, becoming a partner in Praeds & Company of 189 Fleet Street, London from 1817 until his death.

In 1815, he married **Elizabeth Chaplin, (1785-1865)** daughter of Charles Chaplin, of Blankney House, Lincolnshire, in 1815. In 1856, the Fane family property, Little Ponton Hall, in Lincolnshire, came under Vere Fane's guardianship until his death in 1863, when the property was sold. At the time of his death, his wealth was listed as being £20,000.

R. & S. CARRARD & CO
Goldsmiths & Jewellers
70 THE CROWN
25, BAY STREET LONDON



223



A DIAMOND FULL ETERNITY RING, set throughout with old-cut diamonds between polished borders, mounted in white precious metal, total diamond weight approximately 1.5 carats, ring size R. £800-1000

224

A DIAMOND CLUSTER RING, the principal brilliant-cut diamond claw set within a cushion-shaped hoop cluster surround of small brilliant-cut diamonds, between similarly set shoulders, mounted in 18ct white gold, shank partially hallmarked, principal diamond approximately 0.5 carats, ring size M. £600-800



225



A PLATINUM MOUNTED DIAMOND HALF ETERNITY RING, claw set with brilliant-cut diamonds, shank stamped 'pt950' and bearing indistinct maker's mark, ring size K. £320-400

226

A DIAMOND SET DRESS RING, the navette-shaped cluster centred with a raised claw set brilliant-cut diamond, between borders of square claw set small brilliant-cut diamonds and brilliant and single-cut diamond set tapered panel shoulders, mounted in white precious metal, shank stamped '585', principal diamond approximately 0.55 carats, ring size O. £600-800



227



A CABOCHON TOURMALINE AND DIAMOND CLUSTER RING, the oval cabochon pink tourmaline claw set within a cluster surround of square claw set brilliant-cut diamonds with polished baton spacers between, mounted in white precious metal, *ring size K*.

£500-700

228



AN EMERALD AND DIAMOND DRESS RING, the rectangular step-cut emerald in four claw mount, the broad band set with tapering rows of single-cut diamonds, millegrain edged and pierced decorated to the outer borders, white precious metal mounted, (one small diamond missing), *emerald dimensions 10mm x 7.2mm x 3.7mm, ring size K (leading edge)*.

£2000-3000

A PRIVATE COLLECTION OF POST MEDIEVAL GOLD JEWELLERY DISCOVERED IN JAMAICA, WEST INDIES

This collection of 16th-18th century rings and other jewels was discovered in the dried-up riverbeds around Old Spanish Town in Jamaica by a relative of the vendor, who was a keen detectorist in the mid 20th century.

Now one of the principal islands in the Caribbean, the explorer Christopher Columbus claimed Jamaica as part of the Spanish Empire in 1494, the Spaniards building their capital, known as St Jago de la Vega, on the West bank of the Rio Cobre. When in 1655, the English conquered Jamaica, the capital was renamed as Old Spanish Town. A devastating earthquake in 1692 destroyed the English administrative centre at Port Royal, and Spanish Town became the English capital on the island, remaining so until 1872 when the seat of the colony was moved to its current home in Kingston.

Jamaica was a vital and volatile place during the mid 17th to mid 18th centuries, and formed part of the Triangular Transatlantic Slave Trade. Trade ships sailed from Europe to the African coast, exchanging manufactured goods and weapons for slaves, then on to the Caribbean to sell the slaves, and returned to Europe with goods such as sugar, tobacco and cocoa. The period from 1716 to 1726 is known as the 'Golden Age of Piracy', when Anglo-American sailors and privateers in the Caribbean, left unemployed by the end of the War of Spanish Succession, turned en masse to piracy, targeting the bounty laden ships that sailed the routes around the Caribbean seas. These jewels were presumably lost to the river during this turbulent period of Jamaican history.

229 A 16TH CENTURY SINGLE STONE COLOMBIAN EMERALD RING, the lozenge-cut emerald within closed back collet/pie-dish bezel, to triangular section shank, (emerald chipped), ring size approximately M. £4000-6000



In 1531 Spanish conquistadors, led by Francisco Pizarro, first landed on the coast of South America, in Peru and discovered that the natives of this 'New World' possessed plentiful supplies of both gold and particularly fine emeralds. The conquistadors moved inland, seizing the gold of the Aztec, Maya and Inca peoples and so began an immense transfer of precious metal across the Atlantic. In the 1550s alone, Spain shipped more than 100,000 lb of gold eastwards out of the New World. Some of these treasure laden Spanish ships would have undoubtedly found port in Jamaica, then still a part of the Spanish Empire.

Pizarro and his conquistadors also tried to uncover the source of the fine 'New World' emeralds, but it took until 1537 to discover the mines at Chilvor, in Colombia, with a second source being found in Muzo, Colombia in 1539. Hazel Forsyth in her catalogue for the Cheapside Hoard Exhibition, held at the Museum of London in 2013, discusses the Spanish appreciation of Colombian emeralds in the 16th century:

"Stones with a cloudy aspect and multiple inclusions were called 'relampagos' (lightening); the lighter, brighter coloured material was known as 'verde alegre' (happy green); while the greatly prized intense blueish green stones were branded 'verde negro' (green-black)... Some of the best stones went to a specially convened court in Bogotá and thence to the King of Spain, but the majority were either smuggled or traded secretly by an international network of gem merchants".

Over 400 years later, Colombian emeralds are still considered to be the finest in the world, and this 16th century ring displays a particularly early and rare example from this source.



A New & Exact Mapp
of y^e Isle of
IAMAICA
as it was lately Surveyed
by order of S. Tho.
Mediford Bar: late Govern

230



AN EARLY 18TH CENTURY POSY RING, with plain exterior, the interior inscribed 'Well directed if accepted' in italic script and bearing maker's mark 'IS' for James Savage (1732-33), ring size I. £500-700



231



A 17TH-18TH CENTURY POSY RING, with plain exterior, interior inscribed 'ioyned in one by Christ alone' in neat italic script, ring size K. £600-800



232



A 17TH-18TH CENTURY MEMENTO MORI RING, the plain exterior with traces of incised detail, the interior inscribed 'Prepare to follow, E.Q.' and bearing maker's mark, *ring size I*. £200-300



233



A 17TH-18TH CENTURY POSY RING, with plain exterior, the interior inscribed 'Reading this, wish me a kis' in italic script, *ring size K*. £600-800



234



AN EARLY 18TH CENTURY MEMORIAL RING, with traces of engraving to exterior, interior inscribed 'M.G. obyt Decbre 24 Ao 1722', bearing maker's mark 'IW', band split, ring size approximately K. £100-150

235



AN EARLY 18TH CENTURY MEMENTO MORI/MEMORIAL RING, the plain gold band with a skull motif to the exterior between hatched triangular shoulders, the interior inscribed 'E.T. obyt December yc:20:1708', ring size H. £1000-1500



236



A 16TH CENTURY EMERALD SINGLE STONE RING, the square step-cut emerald and raised closed back collet setting, to triangular section shank, mounted in yellow gold, ring size I. £2000-3000

237 AN UNUSUAL 16TH-17TH CENTURY RING IN THE FORM OF A LIZARD OR SALAMANDER, the bezel modelled as the reptile, his tail forming the shank of the ring and looping back around his neck, with incised scale detail, in yellow gold, ring size O. £800-1200

Lizards and salamanders were popular motifs across European jewellery and decorative arts in the 16th and 17th centuries. They were considered to have protective properties and symbolic significance. The salamander was especially revered, for its fabled ability to both live in and quench fire. Zoomorphic jewels, including lizards and salamanders were particularly popular and highly prized in Spain. There is a very fine example of a salamander brooch, set with Colombian emeralds, within the Cheapside Hoard collection at the Museum of London, dating to the late 16th-early 17th century.

See: Forsyth, H., *The Cheapside Hoard: London's Lost Jewels*, Museum of London, 2013.



- 238** A 17TH-18TH CENTURY SINGLE EMERALD SET EARRING, the scrolled open panel with crown surmount, displaying traces of white enamel, centred with a step-cut emerald and suspending one of two pear-shaped cabochon emerald drops below (one lacking), mounted in yellow gold, *length 26mm.* £500-700



- 239** TWO ANTIQUE EMERALD SET JEWELS, the first an 18th century earring, the lozenge-shaped panel with engraved detail centred with a raised collet set square step-cut emerald, to broken hook fitting; the second a 19th century pendant, set with a round cabochon emerald within textured surround, suspending a bell-shaped drop below, *pendant length 23mm.* £200-300



- 240** A GROUP OF FIVE 16TH-17TH CENTURY HOOP EARRINGS, together with a gold bead of wirework disc design, a single 19th century gold cufflink, the octagonal panels with engraved flowerhead decoration, a further small hinged hoop earring and a gold wedding band with chased foliate exterior (split). £200-300



The Property of a Lady

241



A 15TH CENTURY GOLD POSY RING, the pyramidal bezel with square vacant setting, the tapered shoulders and shank engraved with sprigs of foliage, flowerheads and scallop shells, with traces of dark and light enamel remaining, the interior of the band inscribed 'En vous ma fie', *'my faith/fidelity is to you (alone)'*, in black letter script, *ring size L*. **£5000-7000**

This ring was discovered in the late 1970s and has been declared and disclaimed as treasure. It is recorded on the Portable Antiquities Scheme, ref: LIN-1DAADC and is accompanied by relevant paperwork

The tradition of posy rings, rings bearing a short amatory inscription, given or exchanged as tokens of love and promise, carried through from the early 15th century until the introduction of compulsory hallmarking of wedding bands in the 19th century. The use of black letter script is associated with the earliest examples, but was no longer fashionable by the middle of the 16th century. During the medieval period these 'posies' were usually written in French, the language of courtly love. The posies would have been appreciated by the educated and literate classes of medieval society who commissioned and exchanged them. The more conventional designs are band rings, with the gem set examples, such as this, being much rarer.

242



A DIAMOND SET FOLIATE LEAF-SHAPED PENDANT, claw set with three principal brilliants, and smaller single-cut diamonds, on bale, reverse stamped 'EARL' and 18k', length 5cm. £600-700

243



A PALE PEACH CORAL AND CULTURED PEARL BRACELET, brooch and earclip matched suite, the three row cultured pearl bracelet to a carved coral clasp modelled as a rose bloom, mounted in yellow precious metal, the 9ct gold brooch and earclips by Cropp & Farr, the brooch centred with a carved coral modelled as two dahlia blooms, with cultured pearl accents, the earrings set with coral beads and cultured pearls, brooch length 58mm. £300-500

Please note coral is covered by CITES legislation and may be subject to import/export and trade restrictions.

Objects of Vertu



244



A LATE 18TH CENTURY SILVER BUTTON, the round button/disc with bright-cut engraved decoration, bearing maker's mark 'SB' to the reverse, possibly for Susanna Barker, circa 1780s, diameter 26mm. £30-40

245



TWO SILVER PAGE MARKERS AND A SILVER BLADED FRUIT KNIFE, the first modelled as a hand, with pointing index finger, by Crisford & Norris, Birmingham 1911, the second with tapering blade and magnifying glass inset terminal, same makers, and a silver bladed mother o' pearl fruit knife modelled as a pen knife, by Villiers & Jackson, Birmingham 1916, first length 67mm. £80-100

246



A COLLECTION OF FIVE VARIOUS SILVER BOXES, comprising a rectangular George III snuff box, engraved with vertical leaves within a lozenge grid design, and edged with repeating guilloché border, the cover applied with plaque engraved 'To a friend', by Joseph Taylor, Birmingham, 1808; a kidney-shaped box, Birmingham 1913; a Chinese bowled card case, engraved with a dragon; a twin division stamp case of envelope form and a small oval pill box, first box length 7.8cm. £200-300

- 247** A CARVED IVORY MINIATURE BUST OF EMPEROR FRANCIS I OF AUSTRIA, with stiff collar and cravat, wearing the neck badge of the Order of the Golden Fleece and two breast stars, (lacking base/socle), length 6.8cm. £60-80

Francis II (1768-1835) was the last Holy Roman Emperor, ruling from 1792 until 6 August 1806, and founded the Austrian Empire, becoming **Francis I**, the first Emperor of Austria, between 1804-1835. For the two years that these two roles overlapped, Francis was history's only named *Doppelkaiser* (double emperor) and styled himself '*By the Grace of God elected Roman Emperor, ever Augustus, hereditary Emperor of Austria*'. He was also Apostolic King of Hungary and Bohemia as Francis I and served as the first president of the German Confederation following its establishment in 1815.

For a similar depiction see the portrait by Ferdinand Georg Waldmüller (1793-1865).



- 248** A MECHANICAL PENCIL BY DUNHILL AND AN INK PEN BY SHEAFFER, the pencil with engine-turned body, signed and stamped 'Made in England, 9ct', the fountain pen, signed and stamped '12k GF'. £80-100



- 249** AN ITALIAN RED DEER'S HEAD STIRRUP CUP, the polished bell-shaped cup with gilt interior to base realistically modelled as the head of a red deer stag, stamped 'SERRA, ROMA' and '925', length 13cm. £100-120



250



A FRENCH IVORY DESK SET, comprising an ivory handed dipping ink pen, pencil and letter opener/paper knife, each applied with three silvered fleur-de-lys motifs, in fitted case, silk signed A.W. Faber, pen length 19cm. £60-80

Please note ivory is covered by CITES legislation and is subject to import/export and trade restrictions.

251



A LATE 19TH CENTURY CONTINENTAL SILVER TEA CADDY AND A SILVER SWEETMEAT BASKET, the tea caddy of shaped oval form with pull off cover and pineapple finial, import marks for London 1901 and base bearing psuedo 18th century French hallmarks, and a circular pierced decorated sweetmeat basket, Birmingham 1912, height of tea caddy 8cm, height of basket 10cm.

£100-120

252



PROPERTY OF A NOBLE FRENCH FAMILY: A LATE 18TH CENTURY BURR WOOD AND HORN LINED CIRCULAR SNUFF BOX, the cover decorated in relief with a profile of Louis XVI à dexter and with the legend 'LOUIS XVI ROI DE FRANCE', together with a lock of the King's hair enclosed in a glazed heart-shaped locket, *diameter of snuff box 7cm, length of locket 2cm.* **£100-200**

Provenance: Jean Jacques de Livron (1766-1840) and thence by descent.

253



A PAIR OF LATE 19TH CENTURY CONTINENTAL SILVER TABLE BUSTS OF LOUIS XVI AND MARIE ANTOINETTE, each modelled as head and shoulders in contemporary dress, Louis XVI wearing the Order of the Golden Fleece, the busts raised on socles above square bases with indented corners, with import marks for Berthold Muller, London 1900 (partially struck mark to one), *heights 12.5cm and 13cm respectively.* **£120-150**

254



A SMALL SILVER ENAMELLED CIGARETTE CASE, the front with enamelled village scene of thatched cottages beside a pond, within yellow guilloché enamel border, with similarly decorated yellow enamelled base, cabochon set thumbpiece, bearing import marks for 'TK & Co', London, 1927, length 8.2cm. £120-160

255



A LATE 19TH CENTURY SILVER MULTI COMPARTMENT RECTANGULAR VESTA CASE, decorated throughout with scrolling foliate, the hinged cover opening to reveal a lidded compartment, the underside with further hinged compartment, and engraved lattice-work strike to one end, unmarked, length 8cm x width 2.2cm x depth 2.4cm. £150-200

Watches



Watches

256



AN 18CT WHITE GOLD 'TANK AMERICAINE' CALENDAR WRISTWATCH, BY CARTIER, the signed guilloche cream dial with black Roman numerals, secret signature at numeral VII, and date aperture at numeral VI, automatic movement, white gold case signed, stamped 'Automatic, Water resistant, 18k' and numbered '1726 0056921', with faceted sapphire set crown, to a signed tan crocodile leather strap, with signed suede pouch, dial dimensions 27mm x 16mm. £800-1200

257

AN 18CT GOLD FOB WATCH, BY SIR JOHN BENNETT, the signed white enamel dial with black Roman numerals, three-quarter plate movement signed and numbered '373131', signed gold cuvette, polished gold case hallmarked, for London, 1885 and with presentation inscription to inside of back cover, with silver mounted easel back stand, by Deakin & Francis, hallmarked for Birmingham, 1907 and initialled, watch diameter 38mm. £220-260



- 258** A LADY'S 18CT GOLD CLASSIC WRISTWATCH, BY BULGARI, the circular black dial with gilt baton hour markers and Arabic numerals, signed quartz movement, the case stamped '750' with Swiss marks and European convention marks, signed and numbered 'BB 26 GL F116520', the polished bezel signed, to a signed blue crocodile leather strap with signed gold clasp, stamped '750', dial diameter 19mm. £800-1200



- 259** AN 18CT GOLD LADY'S WRISTWATCH, BY HERMES, with signed plain black enamel dial, jewelled movement, the rectangular case with geometric engraved pattern, bearing Swiss marks and UK import marks, to a signed green leather strap with signed gilt buckle clasp, dial length 17mm. £300-400



- 260** A LADY'S CALENDAR SPORTS WATCH, BY BULGARI, the signed silvered dial with black baton hour markers and Arabic numerals, with date aperture at numeral 3, signed quartz movement, the brushed aluminium case with signed black bezel, the black case back signed and numbered 'AL 32TA M 75221', to a black rubber strap with articulated shoulders and signed clasp, dial diameter 23mm. £200-300



261



A LADY'S 18CT GOLD Baignoire WRISTWATCH, BY CARTIER, the signed silvered engine-turned dial with black Roman numerals, inner 5 minute divisions, blued steel sword hands, secret signature numeral X, quartz movement, brushed and polished stepped body case with back held by 4 screws, cabochon set winding crown, hinged clasp folding under the case, case, dial and movement signed, movement number 057, 4 jewels, back of case numbered '2290 GC11912', fitted maker's red leather strap, with red suede Cartier pouch, *dial width 20mm.*

£900-1200

262

A LADY'S PERPETUAL OYSTER DATEJUST STAINLESS STEEL AND GOLD BRACELET WRISTWATCH, BY ROLEX, the white dial with gilt baton numerals, luminous hands and centre sweep seconds hand, date aperture at numeral 3, within fluted gold bezel, signed steel case with screw down back, bearing serial number 'L781130' and model number '69173', on jubilee bracelet, bracelet numbered 'N12 62523D.18', *dial diameter 25mm.* £800-1200



263



A LADY'S HAPPY DIAMOND WRISTWATCH, BY CHOPARD, the signed white enamel dial within a clear glass bezel enclosing seven loose collet set brilliant-cut 'Happy' diamonds, within brilliant-cut diamond set borders, ribbon bow shoulders pavé set with small brilliant-cut diamonds and principal baguette-cut diamonds, the reverse of case bearing European convention mark '750', signed 'Happy Diamonds' and numbered '4097 1 526073', to a polished brick-link bracelet strap, clasp signed and numbered '20/5595', in Chopard case and box, *wristwatch length 18cm.* £3000-5000

264

A LADY'S 18CT GOLD AND DIAMOND MINI TANK WRISTWATCH, BY CARTIER, the signed cream dial with black Roman numerals and and mystery signature at numeral X, blued steel hands, with diamond set bezel, and diamond mounted winder (displaying pavilion), the reverse signed 'Cartier, and numbered '1361 CO 19797' and bearing European convention mark, with integral brick-link bracelet and deployant clasp, *dimensions of watch head 13mm x 9mm.*

£1500-2000



- 265** A LADY'S STAINLESS STEEL WRISTWATCH, BY **BADET & Co**, the black guilloché tonneau-shaped dial signed 'Badet & Co, Geneve, No 3' and with baton hour markers, quartz movement, case signed to the reverse and numbered 'Reference 306, No 0063', to brick-link bracelet strap with signed clasp, *dial length 21mm*. **£150-200**



- 266** AN 18CT WHITE GOLD DRESS WRISTWATCH, BY **VACHERON CONSTANTIN**, the polished black rectangular dial signed and with tapered hands, signed manual wind movement numbered '1003/1', the case signed, stamped '18k' and bearing UK import marks, the bezel and integral tapered bracelet strap of textured and polished woven-link design, clasp signed, *wristwatch length 18cm*. **£4000-6000**



- 267** A STAINLESS STEEL AND DIAMOND SET WRISTWATCH, BY **DIOR**, the brushed steel dial with geometric detail signed and with four small brilliant-cut diamond hour markers, quartz movement, signed stainless steel case numbered 'CD043113-J FM5287', the bezel and crown set with small brilliant-cut diamonds, the brushed steel track-link bracelet strap to signed deployant clasp, in case with papers, *dial diameter 34mm*. **£300-500**

Dior

CERTIFICAT
D'ORIGINE
DES PIERRES
PRÉCIEUSES

Model no. / Ref. number
CD113112A001
In. order / Case No.
FK5842
Pierres / Gemstones
Diamants
Nombre de pierres / Number of stones
44
Poids (carats) / Weight (carats)
0,22cts
Table / Cut
Brillants
Couleur / Color
F-G
Pureté / Clarity
VS

Dior



268



A LADY'S STAINLESS STEEL WRISTWATCH, BY BAUME & MERCIER, the plain polished square dial signed, quartz movement signed and numbered '5057', the polished stainless steel case signed and numbered '2872273, MV045197', to polished track-link bracelet strap with signed deployant clasp, dial measures 14mm x 15mm. £200-300

269

A STAINLESS STEEL 'PASHA' CHRONOGRAPH AUTOMATIC WRISTWATCH, BY CARTIER, the signed white enamel dial with lattice detail, luminous spot hour markers and luminous hands, centre sweep chronograph seconds hand, three subsidiary dials for seconds and chronograph minutes and hours, and date aperture, automatic movement, the polished stainless steel case signed, with two push chronograph buttons to the band and crown within screw down cover, to brushed steel track-link bracelet strap with signed clasp, in signed suede pouch, dial diameter 26mm. £500-800



- 270** A GENTLEMAN'S DIAMOND SET WRISTWATCH, BY **PIAGET**, the openwork track-link style dial pavé set with brilliant-cut diamonds, the glass signed, with signed quartz movement and signed case, stamped '750' with Swiss marks, within diamond set bezel, to track-link bracelet strap pavé set with brilliant-cut diamonds, *wristwatch length 17.8cm.* £6000-8000



- 271** A LADY'S 'MADEMOISELLE' 18CT GOLD AND CULTURED PEARL QUARTZ COCKTAIL WATCH, BY **CHANEL**, the signed square white enamel dial with black Roman numerals, pearl set winder, reverse stamped 'CHANEL PARIS, 18K 750 MH 37988', '© CHANEL 1898', to a five row cultured pearl set bracelet strap, with signed vertical slide action clasp, stamped with European convention mark, *length 17.5cm.* £1500-2000



272



A GROUP OF FIVE GOLD CASED WRISTWATCHES, including a Girard Perregaux lady's wristwatch, with mesh-link strap, a Tissot lady's wristwatch, with later curb-link bracelet strap, an Accurist lady's watch with fancy-link bracelet strap, and further lady's and gentleman's examples on expanding gilt metal straps. £300-400

273



AN 18CT GOLD LADY'S WRISTWATCH, BY JAEGER-LE-COULTRE, the signed rectangular cream dial with applied baton hour markers, signed jewelled movement, the 18ct gold case with stirrup shoulders and signed crown, bearing UK import marks and numbered '1670' to the interior and 'A 1126835' to the reverse, to a signed narrow brown crocodile leather strap, dial width 16mm. £300-400

274



A DIAMOND SET COCKTAIL WATCH, the signed silvered rectangular dial with black Arabic numerals, jewelled movement, lacking crown, in white precious metal case, the bezel pavé set with single-cut diamonds, with baguette-cut diamond accents, to articulated tapered shoulders, (one broken), set with single-cut diamonds, each link centred with a principal collet set old brilliant-cut diamond, to black cordette strap, dial length 12mm. £200-300

275 A COLLECTION OF OPEN FACED POCKET WATCHES, comprising nine silver cased examples, various dates and makers, two with curb-link Albert chains and two further base metal cased examples. £200-300



276



AN 18CT GOLD HUNTER POCKET WATCH, BY J W BENSON, with an 18ct gold Albert chain, the signed white enamel dial with black Roman numerals and subsidiary seconds dial, the $\frac{3}{4}$ plate top wind movement signed 'J W Benson, 62-64 Ludgate Hill, London, by special warrants to H M the Queen and H R H the Prince of Wales', with gold cuvette, hallmarked for London, 1896, and an 18ct gold belcher-link Albert chain, hallmarked, with swivel terminal and T-bar, suspending an 18ct gold twin sovereign case, together with further accessories (af), watch diameter 53mm, chain length 38cm. £1800-2200

277

A 9CT GOLD OPEN FACE POCKET WATCH, the white enamel dial with black Roman numerals, subsidiary dial and blued steel hands, 15 jewel lever escape movement, the case signed 'Dennison' and hallmarked for Birmingham, 1918, engraved presentation inscription, on a graduated curb-link Albert chain, with central T-bar, watch diameter 5cm.

£400-600



278



AN 18CT GOLD KEYLESS WIND OPEN FACE POCKET WATCH BY J W BENSON, the signed black enamel dial with Roman numerals, seconds subsidiary dial at numeral 6, and blued steel spade hands, signed three-quarter plate, numbered '1031642', inner back case with maker's mark 'JWB' and numbered '3705', hallmarked for London 1901, diameter 47mm.

£300-500

279



AN 18CT GOLD SQUARE POCKET WATCH, the square silvered dial with black Roman numerals, blued steel spade hands, and outer minute chapter ring, the inner case numbered '271075' and with import marks for London 1913, movement numbered 65211, the reverse with applied initials ETS, on a 9ct gold flattened belcher-link chain, together with a 9ct gold sapphire and rose-cut diamond inset small cheroot holder, the case of tapering cylindrical form, with hinged cover and suspensory loop containing a collapsible cheroot holder stamped 9ct, with amber mouthpiece, both numbered 'RD403781', and a S Mordan & Co pencil holder with slide action, *pocket watch 4cm diameter, cheroot holder 2.4cm, pencil 5.3cm (excluding suspensory loop and pencil).* £600-800

280



AN 18CT GOLD OPEN FACE KEYLESS WIND POCKET WATCH WITH CHAIN, the white enamel dial with black Roman numerals and outer minutes scale, subsidiary seconds dial at numeral six, jewelled movement bearing maker's mark 'SUG' in shield, the case stamped '750' and bearing the same maker's mark, with monogram 'AB' to the reverse, the gold cuvette inscribed 'Echappé à Ancre, Spiral Breguet, 15 Rubies', together with a graduated closed curb-link Albert chain, bearing partial guarantee mark, possibly Swiss, with swivel clasp terminal, suspending an oversized ring bolt clasp, and a locket opening swivel mounted fob seal, *watch diameter 48mm, total chain length 44cm.* £800-1200

End of Sale

DIAMONDS

Diamonds are assessed according to the four Cs:

Carat weight

1 carat equals 0.2 grams.

Cut

The quality of a cut is assessed in terms of its proportions, symmetry and polish.

Colour

Unless regarded as a 'fancy' coloured diamonds, all diamonds are graded on their lack of colour. The gradings runs as follows:

GIA	CIBJO	Traditional
D	Exceptional White + (EW+)	Finest White
E	Exceptional White (EW)	Finest White
F	Rare White + (RW+)	Fine White
G	Rare White (RW)	Fine White
H	White (W)	White
I	Slightly Tinted White (STW)	Commercial White
J	Slightly Tinted White (STW)	Top Silver Cape
K	Tinted White (TW)	Top Silver Cape
L	Tinted White (TW)	Silver Cape
M-Z	Tinted Colour (TC)	Cape
Fancy	Fancy Colour	

Clarity

Diamonds are graded on their freedom from inclusions (within the stone) and blemishes (found on the surface of the stone). They are assessed using 10x magnification, and are graded as follows:

GIA	CIBJO	Description
Flawless (FL)	Loupe Clean (LC)	Shows no inclusions or blemishes
Internally Flawless (IF)	Loupe Clean (LC)	Shows no inclusions and only insignificant blemishes
Very Very Slightly Included (VVS1/2)	Very Very Slightly Included (VVS1-2)	Contains minute inclusions which are very difficult for an experienced grader to see with 10x magnification
Very Slightly Included (VS1-2)	Very Slightly Included (VS1-2)	Contains very small inclusions that are difficult to see with 10x magnification
Slightly Included (SI1-2)	Slightly Included (SI1-2)	Contains inclusions that are easily visible with 10x magnification
Imperfect/Included (I1-3)	Pique (P1-3)	Contains inclusions that are obvious with 10x magnification and can often be seen with the naked eye; durability may be affected

Please note the four Cs of a diamond cannot be fully assessed whilst the stone is mounted. The approximate gradings provided in the condition reports are estimations, made by the specialists whilst the stones were mounted and are for guidance only. If a stone has been unmounted and assessed in a gemmological laboratory, this will be noted in the cataloguing/condition report.

INDEX of MAKERS

Badet & Co.....	Lot 265
Baume & Mercier	Lot 268
Sir John Bennett.....	Lot 257
Boodle & Dunthorne	Lot 103
Buccellati	Lot 54
Bulgari	Lots 258 and 260
Cartier.....	Lots 22, 138, 139, 218, 256, 261, 264 and 269
Chanel.....	Lot 271
Chopard.....	Lots 140 and 263
Crisford & Norris	Lot 245
Cropp & Farr	Lots 101 and 243
Debacq & Cie.....	Lot 203
Dior.....	Lot 267
Dunhill	Lot 248
Garrard & Co.....	Lot 222
Girard Perregaux	Lot 272
Gubelin	Lot 42
Hermes	Lots 40 and 259
Hunt & Roskell.....	Lots 147 and 150
Jacques.....	Lot 43
Jaeger-Le-Coultre	Lot 273
Georg Jensen	Lot 136
Ilias Lalaounis	Lots 52 and 53
Murrle Bennett & Co	Lots 130 and 131
Pasquale Bruni.....	Lot 18
Piaget	Lot 270
Pioray.....	Lots 41 and 55
Plante & Johnson	Lot 156
Rolex	Lot 262
Sheaffer	Lot 248
Joseph Taylor	Lot 246
Theo Fennell.....	Lot 30
Tiffany & Co	Lots 56 and 68
Tissot	Lot 272
Vacheron Constantine.....	Lot 266
Verdura	Lot 29
Villiers & Jackson.....	Lot 245





London Specialist Auctioneers
Jewellery Medals Coins Banknotes

We are currently accepting entries for our

**Jewellery, Watches
and
Objects of Vertu Sale**

to be held on

Thursday 29th November

at 2pm

Closing date for entries 18th October



**All enquiries please contact Frances Noble or Laura Smith
on 020 7016 1700 or email jewellery@dnw.co.uk**

*Image shows a pair of Art Deco sapphire and diamond
ear pendants to be included in this sale*



Commission Form – Jewellery 4 September 2018

Please bid on my behalf at the above sale for the following Lot(s) up to the price(s) mentioned below. These bids are to be executed as cheaply as is permitted by other bids or any reserve. I understand that in the case of a successful bid, a premium of 20 per cent (plus VAT if resident in, or posted to within, the European Union) will be payable by me on the hammer price of all lots.

Please ensure your bids comply with the steps outlined below:-

- Up to £100 by £5
- £100 to £200 by £10
- £200 to £500 by £20
- £500 to £1,000 by £50
- £1,000 to £2,000 by £100
- £2,000 to £5,000 by £200
- £5,000 to £10,000 by £500
- £10,000 to £20,000 by £1,000
- £20,000 to £50,000 by £2,000
- £50,000 to £100,000 by £5,000
- Over £100,000 by £10,000

Bids of unusual amounts **will be rounded down** to the bid step below and will **not** take precedence over a similar bid unless received first. All absentee bids will be executed in the name of 'Wood'.

NOTE: All bids placed other than via our website should be received by 16:00 on the day prior to the sale. Although we will endeavour to execute any late bids, DNW cannot accept responsibility for bids received after that time. It is strongly advised that you use our online **Advance Bidding Facility**. If you have a valid email address bids may be entered, and amended or cancelled, online at www.dnw.co.uk right up until a lot is offered. You will receive a confirmatory email for all bids and amendments. Bids posted or faxed to our office using this form will now be entered by our staff into the system using exactly this facility to which our clients now have access. **There is, therefore, no better way of ensuring the accuracy of your advance bids than to place them yourself online.**

I confirm that I have read and agree to abide by the Terms and Conditions of Sale printed in the catalogue.

Signed _____

Name (Block Capitals) _____ Client Code _____

Address _____

Tel: _____ E-mail _____

If successful, I wish to pay for my purchases by (please indicate):

- Cash
- Cheque
- Credit/Debit Card (see below)
- Bank Transfer
- Other (please give details) _____

Please note that all payments for purchases by credit card are subject to a 2 percent surcharge on the total invoice price. All payments to be made in pounds sterling.

If successful, I wish to pay for my purchases by (please indicate):

- Master Card
- Visa
- Amex
- Debit card (no surcharge) Issue No

Name (as shown on card) _____

Card no. _____ Start Date / Expiry Date /

Your bids may be placed overleaf

Commission Form – Jewellery 4 September 2018

You may specify a “plus one” bid if you wish, so that in the event that the bidding is against you when your maximum bid is reached this will increase your bid to the next increment. Write “+1” next to your bid.



Lot No	£ Bid	Lot No	£ Bid	Lot No	£ Bid

Saleroom Notices
 Any Saleroom Notices relevant to this auction are automatically posted on the Lot Description pages on the our website. Prospective buyers are strongly advised to consult the site for updates.

Successful Bids

Should you be a successful bidder you will receive an invoice detailing your purchases. All purchases are sent by registered post unless otherwise instructed, for which a minimum charge of £12.00 (plus VAT if resident in the European Union) will be added to your invoice.

All payments for purchases must be made in pounds sterling. Please check your bids carefully and complete the payment instructions overleaf.

Prices Realised

The hammer prices bid at the auction are posted on the Internet at **www.dnw.co.uk** in real time. A full list of prices realised appear on our website as the auction progresses. Telephone enquiries are welcome from 09:00 the following day.

IMPORTANT INFORMATION FOR BUYERS

Absentee Bids

It is recommended that absentee bids are placed using our online advance bidding facility, which is available on our website at www.dnw.co.uk. Bids placed in this way cannot be seen by others and do not go live until the actual moment that the lot in question is being offered for sale. All bids can be easily altered or cancelled by the bidder prior to this point. An automated email will be sent confirming all bids and alterations.

A valid email address is required to bid online.

There is no additional charge for online bidding and it is not necessary to pre-register a payment card in order to do so.

Whilst we are still happy to execute all bids submitted in writing or by phone, fax, etc., it should be noted that bids left with us will be entered at our offices using the same bidding facility to which all our clients have access. There is, therefore, no better way of ensuring the accuracy of your bids than to execute them yourself online.

Whilst online bids can be placed up until the moment a lot is offered for sale, all other bids made to the office must be confirmed in writing, by fax or e-mail and should be received by 16:00 on the day before the auction. Although we will endeavour to execute late bids, Dix Noonan Webb Ltd cannot accept responsibility for any bids received later than this.

Commission Form

Further advice to bidders and purchasers may be found on the commission form included with this catalogue. Please use this form when sending bids to us by post or fax.

Buyers' Premium

A buyers' premium of 20% on the hammer price (plus VAT if resident in, or lots are delivered within, the European Union) **is payable by the buyer on all lots.**

Pre-sale Estimates

The pre-sale estimates are intended as a guide for prospective purchasers. Any bid between the listed figures would, in our opinion, offer a fair chance of success. However all lots, depending on the degree of competition, can realise prices either above or below the listed estimates.

All lots are automatically reserved at the bid step which reflects 80% of the lower estimate, unless otherwise instructed by the buyer.

Methods of Payment

All payments must be made in pounds sterling within five days of the end of a sale unless credit terms have been made by prior arrangement.

The best way to make payment is by Visa, Mastercard or Amex credit or debit cards via our website www.dnw.co.uk. Carriage and insurance is pre-calculated for you so that you may pay immediately.

Payment may also be made by transfer direct to DNW's account at:
Lloyds

Piccadilly London Branch

39 Piccadilly

London W1J 0AA

Sort Code: 30-96-64

Account No: 00622865

Swift Code: LOYDGB2L

IBAN: GB70LOYD30966400622865

BIC: LOYDGB21085

Please include your surname, client code and auction date with the instructions to the bank. Alternative methods of payment which may enable immediate clearance of purchases include cash, recognised banker's drafts, credit cards (Master Card, Visa and Amex) and debit cards. Although personal and company cheques are accepted, buyers are advised that property will not be released until such cheques have fully cleared and cannot be subject to recall, which may take two weeks. Third party payment is not accepted except by prior arrangement. Please note that we reserve the right to

Please note that we will not accept cash payments in excess of £5,000 (five thousand pounds) in settlement for purchases made at any one auction.

Purchases will be despatched as soon as possible upon full payment in pounds sterling for the lots you have bought. Carriage will be at the buyer's expense. Estimates and advice on all methods of despatch can be provided upon request.

Insurance cover will be arranged unless otherwise specified and will be added to the carriage charge for non-UK deliveries..

CONDITIONS OF BUSINESS

Conditions mainly concerning Buyers

1 The buyer

The highest bidder shall be the buyer at the 'hammer price' and any dispute shall be settled at the auctioneer's absolute discretion. Every bidder shall be deemed to act as principal unless there is in force a written acknowledgement by Dix Noonan Webb that he acts as agent on behalf of a named principal.

2 Minimum increment

The auctioneer shall have the right to refuse any bid which does not conform to Dix Noonan Webb's published bidding increments which may be found at dnw.co.uk and in the bidding form included with the auction catalogue.

3 The premium

The buyer shall pay to Dix Noonan Webb a premium on the 'hammer price' in accordance with the percentages set out in paragraph 4 above and agrees that Dix Noonan Webb, when acting as agent for the seller, may also receive commission from the seller in accordance with Condition 15.

4 Value Added Tax (VAT)

The buyers' premium is subject to the current rate of Value Added Tax if the lot is delivered to the purchaser within the European Union.

Lots marked 'x' are subject to importation duty of 5% on the hammer price unless re-exported outside the EU.

5 Payment

When a lot is sold the buyer shall:

(a) confirm to Dix Noonan Webb his or her name and address and, if so requested, give proof of identity; and

(b) pay to Dix Noonan Webb the 'total amount due' in pounds sterling within five working days of the end of the sale (unless credit terms have been agreed with Dix Noonan Webb before the auction). Please note that, as stated above, we will not accept cash payments in excess of £5,000 (five thousand pounds) in settlement for purchases made at any one auction.

6 Dix Noonan Webb may, at its absolute discretion, agree credit terms with the buyer before an auction under which the buyer will be entitled to take possession of lots purchased up to an agreed amount in value in advance of payment by a determined future date of the 'total amount due'.

7 Any payments by a buyer to Dix Noonan Webb may be applied by Dix Noonan Webb towards any sums owing from that buyer to Dix Noonan Webb on any account whatever, without regard to any directions of the buyer, his or her agent, whether expressed or implied.

8 Collection of purchases

The ownership of the lot(s) purchased shall not pass to the buyer until he or she has made payment in full to Dix Noonan Webb of the 'total amount due' in pounds sterling.

9 (a) The buyer shall at his or her own expense take away the lot(s) purchased not later than 5 working days after the day of the auction but (unless credit terms have been agreed in accordance with Condition 7) not before payment to Dix Noonan Webb of the 'total amount due'.

(b) The buyer shall be responsible for any removal, storage and insurance charges on any lot not taken away within 5 working days after the day of the auction.

(c) The packing and handling of purchased lots by Dix Noonan Webb staff is undertaken solely as a courtesy to clients and, in the case of fragile articles, will be undertaken only at Dix Noonan Webb's discretion. In no event will Dix Noonan Webb be liable for damage to glass or frames, regardless of the cause.

10 Buyers' responsibilities for lots purchased

The buyer will be responsible for loss or damage to lots purchased from the time of collection or the expiry of 5 working days after the day of the auction, whichever is the sooner. Neither Dix Noonan Webb nor its servants or agents shall thereafter be responsible for any loss or damage of any kind, whether caused by negligence or otherwise, while any lot is in its custody or under its control.

11 Remedies for non-payment or failure to collect purchase

If any lot is not paid for in full and taken away in accordance with Conditions 6 and 10, or if there is any other breach of either of those Conditions, Dix Noonan Webb as agent of the seller shall, at its absolute discretion and without prejudice to any other rights it may have, be entitled to exercise one or more of the following rights and remedies:

(a) to proceed against the buyer for damages for breach of contract.

(b) to rescind the sale of that or any other lots sold to the defaulting buyer at the same or any other auction.

(c) to re-sell the lot or cause it to be re-sold by public auction or private sale and the defaulting buyer shall pay to Dix Noonan Webb any resulting deficiency in the 'total amount due' (after deduction of any part payment and addition of re-sale costs) and any surplus shall belong to the seller.

(d) to remove, store and insure the lot at the expense of the defaulting buyer and, in the case of storage, either at Dix Noonan Webb premises or elsewhere.

(e) to charge interest at a rate not exceeding 2 percent per month on the 'total amount due' to the extent it remains unpaid for more than 5 working days after the day of the auction.

(f) to retain that or any other lot sold to the same buyer at the sale or any other auction and release it only after payment of the 'total amount due'.

(g) to reject or ignore any bids made by or on behalf of the defaulting buyer at any future auctions or obtaining a deposit before accepting any bids in future.

(h) to apply any proceeds of sale then due or at any time thereafter becoming due to the defaulting buyer towards settlement of the 'total amount due' and to exercise a lien on any property of the defaulting buyer which is in Dix Noonan Webb's possession for any purpose.

12 Liability of Dix Noonan Webb and sellers

(a) Goods auctioned are usually of some age. All goods are sold with all faults and imperfections and errors of description. Illustrations in catalogues are for identification only. Buyers should satisfy themselves prior to the sale as to the condition of each lot and should exercise and rely on their own judgement as to whether the lot accords with its description. Subject to the obligations accepted by Dix Noonan Webb under this Condition, none of the seller, Dix Noonan Webb, its servants or agents is responsible for errors of descriptions or for the genuineness or authenticity of any lot. No warranty whatever is given by Dix Noonan Webb, its servants or agents, or any seller to any buyer in respect of any lot and any express or implied conditions or warranties are hereby excluded.

(b) Any lot which proves to be a 'deliberate forgery' may be returned by the buyer to Dix Noonan Webb within 15 days of the date of the auction in the same condition in which it was at the time of the auction, accompanied by a statement of defects, the number of the lot, and the date of the auction at

which it was purchased. If Dix Noonan Webb is satisfied that the item is a 'deliberate forgery' and that the buyer has and is able to transfer a good and marketable title to the lot free from any third party claims, the sale will be set aside and any amount paid in respect of the lot will be refunded, provided that the buyer shall have no rights under this Condition if:

(i) the description in the catalogue at the date of the sale was in accordance with the then generally accepted opinion of scholars and experts or fairly indicated that there was a conflict of such opinion; or

(ii) the only method of establishing at the date of publication of the catalogue that the lot was a 'deliberate forgery' was by means of scientific processes not generally accepted for use until after publication of the catalogue or a process which was unreasonably expensive or impractical.

(c) A buyer's claim under this Condition shall be limited to any amount paid in respect of the lot and shall not extend to any loss or damage suffered or expense incurred by him or her.

(d) The benefit of the Condition shall not be assignable and shall rest solely and exclusively in the buyer who, for the purpose of this condition, shall be and only be the person to whom the original invoice is made out by Dix Noonan Webb in respect of the lot sold.

Conditions mainly concerning Sellers and Consignors

13 Warranty of title and availability

The seller warrants to Dix Noonan Webb and to the buyer that he or she is the true owner of the property or is properly authorised to sell the property by the true owner and is able to transfer good and marketable title to the property free from any third party claims. The seller will indemnify Dix Noonan Webb, its servants and agents and the buyer against any loss or damage suffered by either in consequence of any breach on the part of the seller.

14 Reserves

The seller shall be entitled to place, prior to the first day of the auction, a reserve at or below the low estimate on any lot provided that the low estimate is more than £100. Such reserve being the minimum 'hammer price' at which that lot may be treated as sold. A reserve once placed by the seller shall not be changed without the consent of Dix Noonan Webb. Dix Noonan Webb may at their option sell at a 'hammer price' below the reserve but in any such cases the sale proceeds to which the seller is entitled shall be the same as they would have been had the sale been at the reserve. Where a reserve has been placed, only the auctioneer may bid on behalf of the seller.

15 Authority to deduct commission and expenses

The seller authorises Dix Noonan Webb to deduct commission at the 'stated rate' and 'expenses' from the 'hammer price' and acknowledges Dix Noonan Webb's right to retain the premium payable by the buyer.

16 Rescission of sale

If before Dix Noonan Webb remit the 'sale proceeds' to the seller, the buyer makes a claim to rescind the sale that is appropriate and Dix Noonan Webb is of the opinion that the claim is justified, Dix Noonan Webb is authorised to rescind the sale and refund to the buyer any amount paid to Dix Noonan Webb in respect of the lot.

17 Payment of sale proceeds

Dix Noonan Webb shall remit the 'sale proceeds' to the seller not later than 35 days after the auction, but if by that date Dix Noonan Webb has not received the 'total amount due' from the buyer then Dix Noonan Webb will remit the sale proceeds within five working days after the date on which the 'total amount due' is received from the buyer. If credit terms have been agreed between Dix Noonan Webb and the buyer, Dix Noonan Webb shall remit to the seller the sale proceeds not later than 35 days after the auction unless otherwise agreed by the seller.

18 If the buyer fails to pay to Dix Noonan Webb the 'total amount due' within 3 weeks after the auction, Dix Noonan Webb will endeavour to notify the seller and take the seller's instructions as to the appropriate course of action and, so far as in Dix Noonan Webb's opinion is practicable, will assist the seller to recover the 'total amount due' from the buyer. If circumstances

do not permit Dix Noonan Webb to take instructions from the seller, the seller authorises Dix Noonan Webb at the seller's expense to agree special terms for payment of the 'total amount due', to remove, store and insure the lot sold, to settle claims made by or against the buyer on such terms as Dix Noonan Webb shall in its absolute discretion think fit, to take such steps as are necessary to collect monies due by the buyer to the seller and if necessary to rescind the sale and refund money to the buyer if appropriate

19 If, notwithstanding that, the buyer fails to pay to Dix Noonan Webb the 'total amount due' within three weeks after the auction and Dix Noonan Webb remits the 'sale proceeds' to the seller, the ownership of the lot shall pass to Dix Noonan Webb.

20 Charges for withdrawn lots

Where a seller cancels instructions for sale, Dix Noonan Webb reserve the right to charge a fee of 15 per cent of Dix Noonan Webb's then latest middle estimate of the auction price of the property withdrawn, together with Value Added Tax thereon if the seller is resident in the European Union, and 'expenses' incurred in relation to the property.

21 Rights to photographs and illustrations

The seller gives Dix Noonan Webb full and absolute right to photograph and illustrate any lot placed in its hands for sale and to use such photographs and illustrations and any photographs and illustrations provided by the seller at any time at its absolute discretion (whether or not in connection with the auction).

22 Unsold lots

Where any lot fails to sell, Dix Noonan Webb shall notify the seller accordingly. The seller shall make arrangements either to re-offer the lot for sale or to collect the lot.

23 Dix Noonan Webb reserve the right to charge commission up to one-half of the 'stated rates' calculated on the 'bought-in price' and in addition 'expenses' in respect of any unsold lots.

General Conditions and Definitions

24 Dix Noonan Webb sells as agent for the seller (except where it is stated wholly or partly to own any lot as principal) and as such is not responsible for any default by seller or buyer.

25 Any representation or statement by Dix Noonan Webb, in any catalogue as to authorship, attribution, genuineness, origin, date, age, provenance, condition or estimated selling price is a statement of opinion only. Every person interested should exercise and rely on his or her own judgement as to such matters and neither Dix Noonan Webb nor its servants or agents are responsible for the correctness of such opinions.

26 Whilst the interests of prospective buyers are best served by attendance at the auction, Dix Noonan Webb will, if so instructed, execute bids on their behalf. Neither Dix Noonan Webb nor its servants or agents are responsible for any neglect or default in doing so or for failing to do so.

27 Dix Noonan Webb shall have the right, at its discretion, to refuse admission to its premises or attendance at its auctions by any person.

28 Dix Noonan Webb has absolute discretion without giving any reason to refuse any bid, to divide any lot, to combine any two or more lots, to withdraw any lot from the auction and in case of dispute to put up any lot for auction again.

29 (a) Any indemnity under these Conditions shall extend to all actions, proceedings costs, expenses, claims and demands whatever incurred or suffered by the person entitled to the benefit of the indemnity.

(b) Dix Noonan Webb declares itself to be a trustee for its relevant servants and agents of the benefit of every indemnity under these Conditions to the extent that such indemnity is expressed to be for the benefit of its servants and agents.

30 Any notice by Dix Noonan Webb to a seller, consignor, prospective bidder or buyer may be given by first class mail or airmail and if so given shall be deemed to have been duly received by the addressee 48 hours after posting.

31 These Conditions shall be governed by and construed in accordance with English law. All transactions to which these Conditions apply and all matters

connected therewith shall also be governed by English law. Dix Noonan Webb hereby submits to the exclusive jurisdiction of the English courts and all other parties concerned hereby submit to the non-exclusive jurisdiction of the English courts.

32 In these Conditions:

(a) 'catalogue' includes any advertisement, brochure, estimate, price list or other publication;

(b) 'hammer price' means the price at which a lot is knocked down by the auctioneer to the buyer;

(c) 'total amount due' means the 'hammer price' in respect of the lot sold together with any premium, Value Added Tax chargeable and additional charges and expenses due from a defaulting buyer in pounds sterling;

(d) 'deliberate forgery' means an imitation made with the intention of deceiving as to authorship, origin, date, age, period, culture or source which is not shown to be such in the description in the catalogue and which at the date of the sale had a value materially less than it would have had if it had been in accordance with that description;

(e) 'sale proceeds' means the net amount due to the seller being the 'hammer price' of the lot sold less commission at the 'stated rates' and 'expenses' and any other amounts due to Dix Noonan Webb by the seller in whatever capacity and howsoever arising;

(f) 'stated rate' means Dix Noonan Webb published rates of commission for the time and any Value Added Tax thereon;

(g) 'expenses' in relation to the sale of any lot means Dix Noonan Webb charges and expenses for insurance, illustrations, special advertising, packing and freight of that lot and any Value Added Tax thereon;

(h) 'bought-in price' means 5 per cent more than the highest bid received below the reserve.

33 Vendors' commission of sales

A commission of 15 per cent is payable by the vendor on the hammer price on lots sold.

34 VAT

Commission, illustrations, insurance and advertising are subject to VAT if the seller is resident in the European Union.



www.dnw.co.uk

We were established in 1991 and are located in a six-storey Georgian building in the heart of London's Mayfair, two minutes walk from Green Park underground station.

Our staff of experts collectively have over 300 years of unrivalled experience on all aspects of numismatics and jewellery, including coins of all types, tokens, commemorative medals, paper money, orders, decorations, war medals, militaria, numismatic books, jewellery, watches, objects of vertu, gemology and diamond grading.

We hold numerous auctions each year, the full contents of which are published on the internet around one month before the sale date, together with a unique preview facility which is available as lots are catalogued and photographed. Printed auction catalogues for auctions are mailed to subscribers approximately three weeks prior to each sale.



Auction viewing room



Reception

Our offices, open from 9am to 5:30pm, Monday to Friday, include a pre-auction viewing room, enabling us to offer this facility to clients during the three weeks prior to an auction.

Auctions are held in our building at 16 Bolton Street, Mayfair, where sales may be attended in person. Free online bidding is available using our own live bidding system or by placing commission bids, all of which and much more being available via our website at www.dnw.co.uk.

We look forward to welcoming clients to Bolton Street and assure you of a warm reception.

Location

