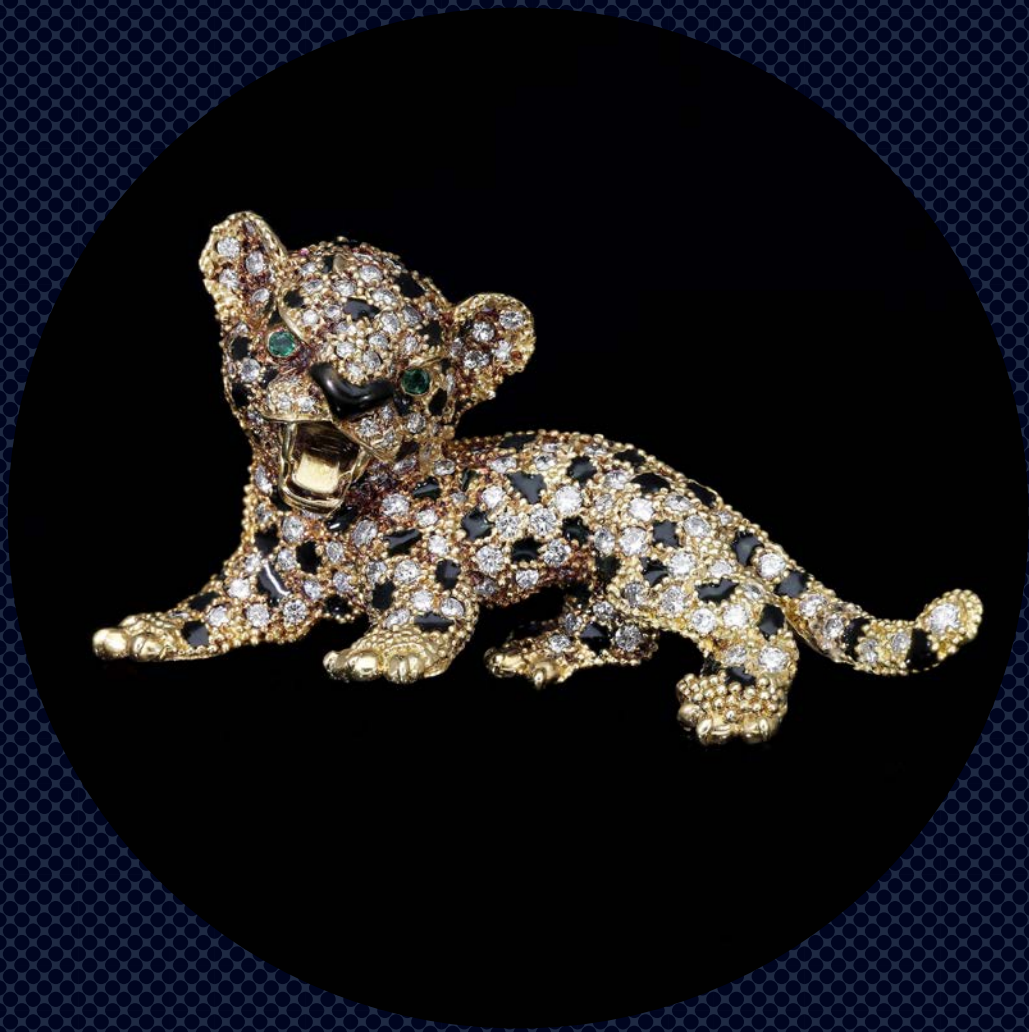


NOONANS
MAYFAIRS

JEWELLERY, WATCHES,
SILVER & OBJECTS OF VERTU

10 SEPTEMBER 2024 AT 12 NOON



FEATURED ABOVE
[LOT 305](#)
AN ENAMEL AND
DIAMOND PANTHER
BROOCH, CIRCA 1960
FRENCH

BACK COVER
[LOT 420](#)
BREITLING. A RARE DIVER'S
WRISTWATCH MADE TO
COMMEMORATE THE
CORONATION OF KING
CHARLES III, CIRCA 2023

AUCTION

AN AUCTION OF:
JEWELLERY, WATCHES, SILVER & OBJECTS OF VERTU

DATE:
10 SEPTEMBER 2024 AT 12 NOON

CONTACTS

GENERAL AUCTION ENQUIRIES
AUCTIONS@NOONANS.CO.UK

JEWELLERY & WATCH ENQUIRIES
JEWELLERY@NOONANS.CO.UK

ACCOUNT ENQUIRIES
ACCOUNTS@NOONANS.CO.UK

BANK DETAILS

BANKERS: LLOYDS
ADDRESS: PICCADILLY, LONDON
SORT CODE: 30-96-64
ACCOUNT NO.: 00622865
SWIFT CODE: LOYDGB2L
IBAN: GB70LOYD30966400622865
BIC: LOYDGB21085

BOARD OF DIRECTORS

PIERCE NOONAN
CHAIRMAN AND CEO

NIMROD DIX
DEPUTY CHAIRMAN

ROBIN GREVILLE
CHIEF OPERATING OFFICER

CHRISTOPHER WEBB
CLIENT LIAISON DIRECTOR (NUMISMATICS)

AUCTION AND CLIENT SERVICES

PHILIPPA HEALY
ADMINISTRATION DIRECTOR
(ASSOCIATE DIRECTOR)
PHILIPPA@NOONANS.CO.UK
T. 020 7016 1775

ANNA HOPPER
ACCOUNTS AND ADMINISTRATION
ANNA@NOONANS.CO.UK
T. 020 7016 1700

SASHA CHOWN
ADMINISTRATOR
SASHA@NOONANS.CO.UK
T. 020 7016 1700

CHRISTOPHER MELLOR-HILL
HEAD OF CLIENT LIAISON (ASSOCIATE DIRECTOR)
CHRISTOPHER@NOONANS.CO.UK
T. 020 7016 1771

JAMES CARVER
CLIENT LIAISON
JBC@NOONANS.CO.UK
T. 020 7016 1770

CHRIS FINCH HATTON
CLIENT LIAISON
FINCH@NOONANS.CO.UK
T. 020 7016 1754

JAMES KING
SALEROOM AND FACILITIES MANAGER
JAMES@NOONANS.CO.UK
T. 020 7016 1755

IAN ANDERSON
CHIEF TECHNOLOGY OFFICER
(ASSOCIATE DIRECTOR)
IAN@NOONANS.CO.UK
T. 020 7016 1751

JEWELLERY SPECIALISTS

FRANCES NOBLE FGA DGA
HEAD OF JEWELLERY DEPARTMENT
(ASSOCIATE DIRECTOR)
FRANCES@NOONANS.CO.UK
T. 020 7016 1781

RACHEL BAILEY FGA DGA
JEWELLERY SPECIALIST
RACHEL@NOONANS.CO.UK
T. 020 7016 1784

LAURA SMITH FGA DGA
JEWELLERY SPECIALIST
LAURA@NOONANS.CO.UK
T. 020 7016 1782

JESSICA EDMONDS FGA DGA
JEWELLERY SPECIALIST
JESSICA@NOONANS.CO.UK
T. 020 7016 1783

WATCH SPECIALIST

JOANNE LEWIS
WATCH SPECIALIST
JOANNE@NOONANS.CO.UK
T. 020 7016 1785

OBJECTS OF VERTU SPECIALIST

MICHAEL WELCH
SPECIALIST
MICHAEL@NOONANS.CO.UK
T. 020 7016 1700



ORDER OF SALE

JEWELLERY, WATCHES SILVER & OBJECTS OF VERTU

TUESDAY 10 SEPTEMBER AT 12 NOON

JEWELLERY	1–355
WATCHES	356–449
SILVER & OBJECTS OF VERTU	450–502

VIEWING

MONDAY 2 SEPTEMBER **TRADE VIEWING BY APPOINTMENT ONLY** 10 AM–4.30 PM
THURSDAY 5 SEPTEMBER 10 AM–4.30 PM
FRIDAY 6 SEPTEMBER 10 AM–4.30 PM
SUNDAY 8 SEPTEMBER 12 NOON–4 PM
MONDAY 9 SEPTEMBER 10 AM–4.30 PM
NO VIEWING ON SALE DAY

ALL LOTS ARE AVAILABLE TO VIEW ONLINE WITH FULL ILLUSTRATIONS
AND CONDITION REPORTS AT WWW.NOONANS.CO.UK

SEPTEMBER VALUATION DAYS

PLEASE CALL 020 7016 1700 OR EMAIL JEWELLERY@NOONANS.CO.UK FOR AN APPOINTMENT

BERKHAMSTED

12 SEPTEMBER 10 AM–1.30 PM
TOWN HALL
196 HIGH STREET
HERTFORDSHIRE HP4 3AP

BLACKHEATH

25 SEPTEMBER 10 AM–2 PM
THE CONSERVATOIRE
19-21 LEE ROAD
BLACKHEATH VILLAGE, SE3 9RQ

BRIDPORT

6 SEPTEMBER 10 AM–2 PM
THE BULL HOTEL
34 EAST STREET, DORSET DT6 3LF

HAMPSTEAD

18 SEPTEMBER 11 AM–4 PM
BURGH HOUSE
NEW END SQUARE
LONDON NW3 1LT

KINGSBRIDGE

27 SEPTEMBER 10 AM–2 PM
HARBOUR HOUSE
THE PROMENADE, DEVON TQ7 1JD

MARLOW

24 SEPTEMBER 10 AM–3 PM
DANESFIELD HOUSE HOTEL
HENLEY ROAD, MEDMENHAM
BUCKINGHAMSHIRE SL7 2EY

NORWICH

16 SEPTEMBER 10 AM–3 PM
MAIDS HEAD HOTEL
20 TOMBLAND
NORFOLK, NR3 1LB

PETERSFIELD

19 SEPTEMBER 10 AM–2 PM
SKY PARK FARM
HAMPSHIRE GU31 5PT

RICHMOND-ON-THAMES

12 SEPTEMBER 10 AM–3 PM
RICHMOND HILL HOTEL
144–150 RICHMOND HILL
SURREY TW10 6RW

SHAFTESBURY

26 SEPTEMBER 10 AM–2 PM
GROSVENOR ARMS HOTEL
HIGH STREET, DORSET SP7 8JA

WELLS

25 SEPTEMBER 10 AM–2 PM
THE SWAN HOTEL
SADLER STREET
SOMERSET, BA5 2RB

SUMMARY OF INFORMATION FOR BUYERS

REGISTERING TO BID

New clients must register online to bid (whether in person or in absentia). This can be done via our website www.noonans.co.uk

Registrations will be subject to due diligence and Noonans reserves the right to cancel registrations.

Once registered, any client bidding for the first time online will need to enter their card details so that a security check can be performed to authorise you to bid (www.noonans.co.uk >Your Account > Account Authorisation). This check is secure, your card details are not seen by us and no funds will be deducted.

BIDDING PRIORITY

Please note that we prioritise executing commission bids as early as possible in order to secure the lot for you at the cheapest possible price. It is therefore entirely possible that a lot can sell at your top bid to another bidder. To avoid this happening we offer an optional 'Plus 1' bidding increment facility, whereby if the bidding is against you at your maximum bid the auctioneer will execute one further bid on your behalf. Please note that in the event of identical top bids priority is given to the first bid received.

PLACING BIDS

LIVE BIDDING VIA WWW.NOONANS.CO.UK

You may bid in real time from your computer or mobile device. We provide an optional live video and audio feed of the auctioneer, allowing you to participate in much the same way as attending the auction. You may see your invoice and pay online directly after you've finished bidding. **There is no additional charge for this facility.**

ADVANCE BIDDING VIA WWW.NOONANS.CO.UK

We strongly advise this method if you wish to leave bids in advance as it is the easiest, most accurate and flexible way to leave your bids and gives you total control over them right up to the point that the lot is offered for sale. Bids made online cannot be seen by others and only become live at the point the lot is being sold. Up until this time your bids can be easily altered or cancelled. An automated email is sent to confirm any changes made. **There is no additional charge for online bidding.**

ADVANCE BIDDING VIA POST, EMAIL OR TELEPHONE

Whilst we are still happy to execute all bids submitted to us using post, email or telephone, it should be noted that all bids left with us in these ways will be entered at our offices using exactly the same bidding facility to which all our clients have access. **There is, therefore, no better way of ensuring the accuracy of your advance bids than to place them yourself online.**

If you are registered with Noonans you may bid by email to bids@noonans.co.uk or by telephone to 020 7016 1700.

All bids placed by email or telephone must be received before 4 PM on the day preceding the sale.

A bidding form is included in the back of this catalogue. If you wish to use this please fill it in carefully, to include all relevant information. Please ensure that you post this form so that it arrives, at the latest, the day before the sale.

BIDDING IN THE AUCTION ROOM

You are very welcome to attend the auction and bid in person if you are registered with Noonans. Please note that the auction room is situated on the third floor of a Georgian building which doesn't have a lift. You may pay for and collect your lots during the auction.

SALEROOM NOTICES

Should the description of a lot need to be amended after the publication of this catalogue, the amendments will appear automatically on the Noonans website, www.noonans.co.uk. All such amendments are also incorporated in the List of Saleroom Notices pertaining to this auction which are posted separately on the website. The auctioneer will refer to any notices at the time any affected lot is offered for sale.

CATALOGUE ILLUSTRATIONS & THE INTERNET

Prospective bidders are reminded that the Noonans website features high-resolution colour illustrations of every lot in this auction. There may also be additional illustrations of any lot.

BUYERS' PREMIUM

The rate for this sale is 24% of the Hammer Price (+ VAT where applicable).

IMPORTATION VAT

Lots marked 'X' are subject to importation VAT of 5% on the Hammer Price unless re-exported outside the UK, as per Noonans Terms & Conditions of Business.

From 1 January 2021 importation VAT may be levied by EU countries on lots sold by Noonans and subsequently imported into those countries. Although Noonans is unable to advise buyers on customs regulations in their country of domicile, there is further information regarding EU importation VAT rates for collectable items in the Terms and Conditions published on the Noonans website.

ARTISTS RESALE RIGHTS (DROIT DE SUITE)

Droit de Suite is a royalty payable to a qualifying artist or their estate every time the artist's work is sold at auction or by an art market professional during the artist's lifetime and for a period of up to 70 years following the artist's death. Royalties are calculated on a sliding percentage scale based on the hammer price. Lots subject to this royalty payment are marked with ARR in the catalogue.

TREATED GEMSTONES

It is common practice for many gemstones to be subject to various treatments to improve their appearance. Sapphires and rubies are routinely heat treated to improve their colour and clarity, emeralds may be treated with oils or resin, other gemstones may be subject to treatments such as staining, irradiation or coating. Jade may be bleached, polymer/resin filled or dyed, or a combination of treatments used. Bidders should be aware that, unless stated to the contrary in the catalogue description, it should be assumed that the gemstones may be treated. Where reports are provided from gem laboratories, the opinions as to gradings and treatments of stones may differ slightly between laboratories and Noonans cannot be held responsible for any discrepancies.

UNMOUNTED GEMSTONES

Please note that VAT at 20% is payable on the Hammer price for unmounted diamonds, rubies, sapphires and emeralds. Relevant lots are marked with an asterisk *. See www.gov.uk/guidance/the-margin-and-global-accounting-scheme-vat-notice

EXPORT OF ORGANIC MATERIALS

Lots marked 'Y' are subject to CITES legislation. Organic materials, such as coral and tortoiseshell may be covered by CITES legislation and this may or may not impact export to other countries. Please be aware that it is the buyer's responsibility to arrange for any CITES export licences for their purchases. Please see www.cites.org. In addition to CITES, mother-of-pearl, coral, and tortoiseshell, if imported into the USA, will be subject to USA Fish and Wildlife regulations.

WATCHES

All watches are sold as viewed.

Please note that watches with water-resistant cases have been opened to identify the movement and so will no longer be water-resistant unless a service to reseal the watch is undertaken at the buyer's expense.

Watches may have been repaired during the course of their lifetime and Noonans do not guarantee the authenticity of any individual component parts.

In some circumstances we are unable to ship the watch with its strap due to certain import restrictions regarding material derived from endangered or protected species.

PRICES REALISED

The hammer prices of lots sold at Noonans auctions are posted at www.noonans.co.uk in real time and telephone enquiries are welcome from 9 AM on the day after the auction.

PAYMENT

You may access your invoice shortly after the hammer has fallen on your last lot. As we weigh lots at the time of cataloguing most shipping is already calculated, enabling you to settle your account and receive your lots in a timely fashion. Auction attendees may pay and collect during the course of the auction as soon as they have bid on their last lot.

[Full Terms and Conditions of Business](#) are available to read in the back of this catalogue and on our website.

CONTACTS

GENERAL SUPPORT

auctions@noonans.co.uk
020 7016 1700 or from overseas
(+44) 20 7016 1700

WEBSITE AND LIVE BIDDING SUPPORT

[Ian Anderson](mailto:ian@noonans.co.uk)
ian@noonans.co.uk
020 7016 1700 or from overseas
(+44) 20 7016 1700

NOONANS
MAYFAIR

CONSIGNING NOW

JEWELLERY, WATCHES, SILVER & OBJECTS OF VERTU

TO INCLUDE

LOUIS OSMAN: THE JENKINS FAMILY COLLECTION

26 NOVEMBER 2024

CLOSING FOR ENTRIES 15 OCTOBER

ALL ENQUIRIES: PLEASE CALL 020 7016 1700 OR EMAIL JEWELLERY@NOONANS.CO.UK



A BRITANNIA SILVER AND ENAMEL 'AQUARIUS' GOBLET BY LOUIS OSMAN, 1976 TO BE INCLUDED IN THIS SALE

JEWELLERY

LOT
No 93





1
A SEED PEARL NECKLACE, CIRCA 1900, the circular links collet-set with seed pearls, leading to a frontispiece with five similarly-set flowerheads, mounted in gold, (one seed pearl deficient), length 39.5cm. £500-£800

According to a PMI test on an XRF Analyzer the necklace is testing as 16ct gold.



2 Y
AN EARLY 20TH CENTURY GEM-SET BRACELET, composed of pierced, curved panels with scrolled heart connections, alternately-set with peridot or mother-of-pearl collets, mounted in gold, stamped '15CT', one link later adapted to form a brooch, bracelet length 17.5cm. £600-£800



3
A 9CT GOLD BANGLE BY SMITH & PEPPER AND AN EARLY 20TH CENTURY GEM-SET BRACELET, the hinged bangle with faceted decoration maker's mark, London hallmark for 1980, together with an early 20th century fancy-link gold bracelet set throughout with opal cabochons, stamped '15', bangle inner dimensions 6 x 5.4cm, bracelet length 18cm. £300-£500

4
AN ALBERT CHAIN, the graduated curb-links with connecting jump rings, T-bar fitting and swivel clasp terminals, stamped '9K' throughout, length approximately 47cm. £700-£800



5

A 9CT GOLD CHARM BRACELET, the curb-link chain suspending six charms, including an elephant and a hardstone seal fob, UK hallmarks, length 18cm.

£700–£900



6

A LATE 19TH CENTURY RUBY AND DIAMOND BANGLE, the hinged bangle of tapered form, the upper section set with an old brilliant-cut diamond between two circular-cut rubies, with granulation and beadwork decoration, inner dimensions 5.7cm x 4.8cm.

£300–£360



7

A DIAMOND HINGED BANGLE, claw set with graduated brilliant-cut diamonds, total diamond weight approximately 1.30 carats, inner dimensions 5.5 x 4.5cm.

£600–£800



8

AN OPAL AND DIAMOND BANGLE, the front set with a row of graduated opal cabochons, spaced by pairs of rose-cut diamonds, inner diameter 56mm.

£200–£300





9

AN EARLY 20TH CENTURY OPAL, RUBY AND SEED PEARL PENDANT, of flowerhead design, the opal cabochons spaced by circular-cut rubies and set within a scalloped seed pearl border, to a similarly-set detachable bale and with additional brooch fitting, mounted in gold, fitted case by 'Harrison & Son, Darlington', length 30mm. **£800–£1,000**



10

A LATE 19TH CENTURY GEM-SET DOUBLE HEART BROOCH, the twinned heart motif set with a circular-cut sapphire and ruby respectively, to a surround of rose-cut diamonds and similarly-set bow surmount, the bar with pearl terminals, mounted in silver and gold, (pearls untested), length 5cm. **£600–£800**



11

A LATE 19TH CENTURY RUBY AND DIAMOND CRESCENT BAR BROOCH, the crescent set with graduated circular-cut rubies and old brilliant-cut diamonds, to a knifewire bar with a cultured pearl to the centre and a circular-cut ruby to each terminal, mounted in silver and gold, length 45mm. **£300–£500**



12

A LATE 19TH CENTURY GEM-SET BROOCH, designed as a three leaf clover and set throughout with circular-cut rubies, emeralds and old-brilliant cut diamonds, mounted in silver and gold, (later brooch and pendant fittings), total diamond weight approximately 0.65 carat, length 30mm. **£300–£500**

13

A GEM-SET BRACELET BY DEAKIN & FRANCIS, the 9ct gold curb-link chain suspending various heart-shaped drops, to include amethyst, garnet, etc., maker's mark, UK hallmark, length 17.5cm. **£200–£300**



14

AN EARLY 20TH CENTURY ART NOUVEAU PENDANT, the enamel orchid within an openwork trefoil surround with seed pearl highlight, mounted in gold, suspended by an associated belcher-link chain, pendant length 30mm.

£150–£200



15

A DIAMOND BROOCH, CIRCA 1890, the lozenge-shaped knifewire with applied initial 'K', set throughout with old brilliant-cut diamonds, mounted in silver and gold, (one diamond deficient), stamped '9CT', total diamond weight approximately 0.50 carat, length 5cm.

£150–£200



16

A PEARL AND DIAMOND CLUSTER RING, 1901, the half-pearl centred within a surround of old single-cut diamonds, to bifurcated scrollwork shoulders, mounted in 18ct gold, Chester hallmark, (pearl untested), ring size N.

£260–£300



17

TWO EARLY 20TH CENTURY ENAMEL FLOWER BROOCHES, the first modelled as a purple enamel pansy with an old brilliant-cut diamond to the centre, the second designed as a seed pearl foliate bar brooch, with central enamel flowerhead, first brooch length 44.5cm.

£200–£240

18

A MID-LATE 19TH CENTURY OPAL AND DIAMOND BANGLE, the hinged bangle with bloomed finish, the front set with an alternating row of opal cabochons and old brilliant-cut diamonds, with granulation and bead work decoration, mounted in gold, stamped '15', inner dimensions 5.5 x 4.8cm.

£360–£400



All lots are subject to extra charges which may be viewed in Ts and Cs 3, 4, 5 and 10 at the back of this catalogue.



19

REGIMENTAL INTEREST: A SOMERSET LIGHT INFANTRY (PRINCE ALBERT'S) CAP BADGE, the polished badge with green enamel decoration, cased by Goldsmiths & Silversmith Co. Ltd, length 30mm. £80–£120



20

REGIMENTAL INTEREST: FOUR SILVER BROOCHES, comprising an Honourable Artillery Company brooch, maker's mark 'TF' for Thomas Fattorini, a silver and gem-set City of London Corporation brooch and a gem-set City of London shield brooch, together with a Coldstream Guards badge with enamel decoration, stamped 'STERLING', various lengths. (4) £80–£120

21

TWO EARLY 19TH CENTURY FOB SEALS, the first gilt copper, of scrollwork form modelled as a dolphin, inset with moulded glass intaglio engraved with a sheaf of corn, the second silver gilt, with urn-shaped surmount and chased border of leaves and scrolls, the carnelian intaglio carved with bust of a gentleman (possibly Sir Isaac Newton), lengths approximately 30mm and 25mm respectively. £60–£80



22

A 19TH CENTURY LOCKET, chased and engraved with scroll and foliate decoration throughout, both sides with a blank cartouche, front and verso opening to reveal glazed compartments, mounted in gold, stamped '9C', maker's mark 'P.Bs', length 45mm. £100–£150

23

AN EARLY 20TH CENTURY 9CT GOLD ALBERT CHAIN, the hollow belcher-link chain with T-bar fitting and swivel hook terminal, Birmingham assay mark, maker's mark for The Albion Chain Co., length approximately 39cm. £600–£800





24

A 9CT GOLD CHAIN AND HARDSTONE FOB, the cable-link chain suspending an associated swivel fob set with plain polished bloodstone and chalcedony, UK hallmarks, chain length 47cm, fob length 27mm **£100–£150**



25

A 19TH CENTURY GOLD SAUTOIR, the ropetwist chain terminating in two tassel drops with chased boule caps, the slider with scalloped outline and engraved foliate decoration, length 45cm. **£600–£800**

According to a PMI test on an XRF Analyzer the chain is testing as 12ct gold, the boules as 11ct, the tassels as 12ct, and the slider probably gold plated.

26

A CARNELIAN SIGNET RING, 1901, the shield-shaped hardstone with two intaglio crests, Chester hallmark, ring size S. **£600–£800**

Both crests - a griffin segreant and a double plume of feathers - are used by a number of families.



27

A SYNTHETIC RUBY AND DIAMOND THREE STONE RING, the tapered band inlaid with an oval-cut synthetic ruby with a brilliant-cut diamond to either side, stamped '750', total diamond weight approximately 0.20 carat, ring size H½. **£200–£300**



28

AN 18CT GOLD SIGNET RING, 1884, inset with an oval bloodstone intaglio, engraved with crest, and motto below 'MAGNANIMITY', engraved to the under bezel '* * * from his mother 31st Jan 1878', maker's mark 'GB', London date letter, ring size M½. **£600–£800**



29

A CHAIN NECKLACE, the faceted belcher-link long chain of two-row design, length 54cm. **£500–£700**

According to a PMI test on an XRF analyzer the chain is testing as 8ct gold and the clasp as 7ct gold.





30

A PAIR OF EARLY 20TH CENTURY GOLD AND TURQUOISE EAR PENDANTS, the turquoise cabochon surmounts suspending a gold bar and seed pearl drop terminating in an oval-shaped turquoise cabochon, stamped '9CT', length 30mm. £100–£200



31

A TURQUOISE AND SEED PEARL NECKLACE RETAILED BY LIBERTY & CO., the hammered fancy-link gold chain spaced by turquoise beads and suspending a turquoise and seed pearl cluster drop with tassel decoration, in fitted case by Liberty & Co., length 39.5cm.

£800–£1,000

According to a PMI test on the XRF analyzer, the gold is testing between 17 and 19ct.

32

A 9CT GOLD 'SPIRIT OF ECSTASY' KEY CHAIN, the textured fancy-link chain leading to the realistically modelled Rolls-Royce mascot, London import mark for 1987, sponsor's mark 'H.S.Ld', length 15cm. £500-£700



33

TWO PENDANTS, the first heart-shaped pendant with textured ground and applied gem-set rose motif, inset with a circular panel with 'plus' and 'minus' symbols and Italian wording 'DI IERI / DI DOMANI', translating as 'More than yesterday, less than tomorrow', together with a pierced '18' pendant, both stamped '750', with Italian assay marks, first length 30mm. £180-£200



34

A GEM-SET NOVELTY BROOCH, FRENCH, in the form of a stylised bunny rabbit, with a turquoise cabochon stomach and circular-cut ruby eye and nose, (turquoise untested), French assay marks, length 30mm. £600-£800

Although unsigned, this brooch is identical to other rabbit brooches retailed by Cartier.



35

A SILVER BROOCH BY GEOFFREY B. BELLAMY FOR IVAN TARRATT LTD, 1962, the oval openwork brooch depicting two leaping gazelles against bullrushes, numbered 2, with facsimile signature and maker's mark, Birmingham hallmark, stamped with Ivan Tarrant Ltd mark, width 43mm. £80-£100



36

A LATE 19TH CENTURY SCOTTISH SILVER LUCKENBOOTH BROOCH BY PETER G. WILSON, INVERNESS, of openwork form with engraved decoration and scroll detailing, maker's mark 'PGW' and 'INS' for Inverness, length 7.5cm. £80-£120



37

A SILVER AND ENAMEL 'HERA' BRACELET BY LIBERTY & CO., 1989, each domed circular link with peacock feather motif beneath blue and green enamel decoration, maker's mark, Edinburgh hallmark, length 19.5cm. £100-£150

The Hera Collection was created by the Liberty Design Studio as an expression of Liberty's design heritage



38

A SILVER AND ENAMEL 'HERA' BRACELET BY LIBERTY & CO., the circular domed links of whorl knot design with blue enamel centres, maker's mark, Edinburgh hallmark, maker's case, length 19cm. £100-£150



39

A LATE 19TH CENTURY SILVER NECKLACE, the fancy-link chain with engraved foliate decoration and beaded detailing, length 49cm. **£60–£80**



40

AN EARLY 20TH CENTURY ENAMEL AND DIAMOND BROOCH, the central rose and old brilliant-cut diamond cluster to a blue guilloché enamel ground within white enamel border, the inscription reading 'AUJOURD HUI ET TOUJOURS', translating as 'Today and Always', mounted in gold, with case by Hunt & Roskell, diameter 20mm. **£120–£150**



41 Y

AN UNEARTHED LADYBIRD BROOCH BY CARTIER, CIRCA 1930, badly damaged, the deteriorated coral body only partially extant, with two of the original diamond 'spots' intact, to black enamelled head and legs, to a damaged clip fitting, the mount signed 'Cartier, London' and 'White gold' and numbered '1024', length 31mm. £200–£300

Provenance: This was discovered by a metal detectorist near Winchester in March 2024.

42

A GEM-SET DRESS RING, designed as a coiled serpent set with single-cut diamond highlights and with ruby gem-set eyes, Portuguese assay mark, ring size approximately L. £120–£150



43

A PAIR OF 19TH CENTURY SILVER GILT CUFFS, each tapered bracelet with pyramidal decoration and bead and wirework detailing, length 18cm. £400–£600

44

A 9CT GOLD NECKLACE, of woven fancy-link design, UK import mark, length 91cm. £1,200–£1,500





45

AN ART NOUVEAU GOLD AND TURQUOISE NECKLACE, CIRCA 1900, the belcher-link chain leading to a frontispiece of graduated pierced panels of curved whiplash design, each set with an oval turquoise cabochon, stamped '9C', length 39.5cm. **£200-£300**



Partially illustrated

46

A SMALL COLLECTION OF NORWEGIAN SILVER GILT AND ENAMEL JEWELLERY BY DAVID ANDERSEN, comprising of a silver gilt and white enamel leaf brooch, bracelet and ear clip suite, together with two further pairs of leaf ear clips decorated with purple and red enamel respectively, with vein detailing throughout, maker's mark 'D-A', stamped '925-S', 'NORWAY STERLING', encircled 'W' mark for Willy Winnaes, brooch length 67mm, ear clips 30mm. **£100-£150**



47

TWO FANCY-LINK 9CT GOLD CHAINS, comprising an Albert chain with T-bar fitting and a double row bracelet chain, hollow links, first length approximately 35cm. **£700-£800**





48

A PAIR OF EARLY 20TH CENTURY SEED PEARL SLIDES, the heart-shaped gold clips each set with a single seed pearl, cased by 'Edwards & Son, Regent Street', length 17mm.

£60-£80



49

OF MASONIC INTEREST: A BALL PENDANT ON CHAIN, the spherical pendant opening to reveal pyramidal links engraved with Masonic symbols, the mount of 9ct gold, the sphere silver gilt and stamped 'F Bros', Birmingham 1979, suspended from 9ct gold chain, pendant length extended 5.5cm.

£150-£200



50

A PAIR OF SAPPHIRE EARRINGS BY DEAKIN & FRANCIS, the 9ct gold flowerheads with a circular sapphire cabochon to the centre, Birmingham hallmark for 1993, misstruck maker's mark, length 19mm.

£100-£150

51

AN EARLY 20TH CENTURY MOTHER-OF-PEARL DRESS SET, comprising buttons, cufflinks and studs, each circular plaque centred with a seed pearl highlight, mounted in platinum and gold, cufflinks with Austro-Hungarian import marks, fitted case by Asprey, largest plaque diameter 14mm.

£800-£1,000

52

A PAIR OF 9CT GOLD CUFFLINKS FOR THE WORSHIPFUL COMPANY OF DRAPERS BY CROPP & FARR, the oval panels engraved with crest and three triple crowns, with chain connectors, Birmingham 1963, cased by Hancocks & Co., panel length 18mm. £120-£150

The Worshipful Company of Drapers was one of the historic Great Twelve Livery Companies, and was founded in the Middle Ages. 1964 was the 600 year centenary in their long history.



53

A PAIR OF ENAMEL CUFFLINKS RETAILED BY SALIMBENI, the oval panels with painted enamel decoration depicting the head of a Dalmatian dog, T-bar terminals, Italian assay marks, panel length 20mm. £500-£700



54

A PAIR OF ENAMEL CUFFLINKS RETAILED BY SALIMBENI, the oval panels with painted enamel decoration depicting the head of a Newfoundland dog, T-bar terminals, Italian assay marks, panel length 20mm. £500-£700



55

THREE ANTIQUE GOLD CHAINS, two of belcher-link design, the third of fancy-link design with pierced scroll plaques and graduated beads, two stamped '9C', various lengths. (3) £400-£600





56

A LATE 17TH CENTURY SILVER THIMBLE, hand punched, with two oval medallions to the sides, the first portraying Cupid with bow and arrow, the second a bleeding heart pierced by two arrows, owner's initial 'N' engraved on panel below, *dimensions 20 x 15mm.* **£150–£200**

Provenance: Ex UK collection.



57

A POST MEDIEVAL SILVER GILT BAND RING, 15TH CENTURY, the broad band with plain convex centre between raised borders with square pellet details, *band width 8mm, ring size T½.* **£150–£200**

Provenance: This ring was found by a metal detectorist at Stockland Bristol in Somerset. It has been recorded on the Portable Antiquities Scheme database, ref: SOM-5DA990, and disclaimed as Treasure, ref: 2008-T264.



58

TWO 16TH CENTURY TUDOR SILVER GILT HAIR PINS, both with hollow openwork spherical terminals, the first designed as four twisted filigree circles enclosing three pairs of pellets, with central double band of twisted wire and four hollow beads, the second with nine kite-shaped openwork panels in each hemisphere, *lengths 11cm and 6.7cm.* **£200–£260**

59

TWO 16TH CENTURY TUDOR SILVER GILT HAIR PINS, both with hollow spherical heads, the first designed as three twisted filigree circles each containing a trefoil with central pellet to each hemisphere, with a double band of twisted wire to the centre, with trefoils and pellets above and below, the second with rosettes in each filigree circle, *lengths 6.5cm and 5.8cm.* **£200–£260**



4TH EARL OF PEMBROKE'S VERVEL



Actual size



60

A 17TH CENTURY SILVER HAWKING VERVEL, the ring (Lewis & Richardson type B) vervel inscribed to the exterior '*Earle of Pembroke', in italic script, diameter 10.3mm. £600-£800

Provenance: This vervel was found by a metal detectorist at Ramsbury, Wiltshire in 2023. It has been recorded on the Portable Antiquities Scheme database ref: HAMP-EE0140.

The most likely candidate as owner of this vervel was the **4th Earl of Pembroke and Earl of Montgomery, Philip Herbert** (1584–1650).

Philip is said to have entered court at the age of 16 as a handsome young man, with great prowess in hunting and hawking. He was acknowledged as a favourite of King James I, who made him a Knight of the Garter, created him Earl of Montgomery, Keeper of the Palace of Westminster and St. James's Park, Lord Lieutenant of Kent and a member of the Privy Council. This affection remained in spite of Philip's reputed foul mouth and quick temper.

Philip became 4th Earl of Pembroke in 1630 when he inherited the title and Wilton House near Salisbury from his brother William, 3rd Earl of Pembroke. Philip's first wife was Lady Susan de Vere, with whom he had seven sons and three daughters, he subsequently married Lady Anne Clifford. He was an active patron of the arts - including the artist Anthony van Dyck - and of literature - Shakespeare dedicated his First Folio to Philip and his brother William.

As his death approached, James I recommended Philip to the favourable notice of his successor Charles. Philip accompanied Charles to Oxford in 1636, and until the Civil War entertained the King every summer at Wilton. At the King's suggestion Philip had the front facade of the house rebuilt by Inigo Jones and his assistant Solomon de Caus. The DNB notes that the house contained stables 'of Roman architecture, with a court and fountain... adorned with Caesars' heads, and there were kept racehorses (some from Morocco) and carriage horses for six coaches, besides all manner of dogs and hawks.'

Philip came into conflict with Charles's queen Henrietta Maria over differing religious inclinations, and he subsequently broke with Charles. Through the first English Civil War, Pembroke sided with the parliamentarians, although he was always one of the most moderate of them, and he maintained some loyalty to the King, trying to encourage him to accept a deal with parliament. In January 1649, Pembroke declined a role on the High Court of Justice established by the Rump Parliament to try Charles I on charges of high treason, although he agreed not to speak out against executing the King.

Two other 17th century hawking vervels associated with the Earl(s) of Pembroke have been found in the environs of Wilton House (see PAS records WILT-E0B23A and WILT-B08B32). This vervel was found in Ramsbury, approximately 35 miles further north, near the town of Marlborough, Wiltshire.



Portrait of Philip Herbert, 4th Earl of Pembroke, by Anthony Van Dyck, circa 1634



Actual size



61

A MEDIEVAL GOLD POSY RING, LATE 12TH CENTURY, with rectangular section hoop, the exterior engraved with Roman/Lombardic lettering in thirteen concave rectangular panels: '+.ET.IB.II.VV.N.G:I:TAMOR', finely engraved laddering present in all the lettering, the inscription has been partially deciphered and may read "And to you I love you", with plain interior; ring size approximately P.

£2,400–£3,000

Provenance: This ring was discovered by a detectorist at Bradfield, Essex in 2022. Bradfield, in 1086, had a recorded population of just 22 households. This ring has been recorded on the Portable Antiquities Scheme database, ref: ESS-B9A945, and disclaimed as Treasure, ref: 2022-T770.

Comparables on the PAS database include NMS-ED74C3; DUR-4301BA; LIN-A1E7B8.





Actual size

62

A MEDIEVAL GOLD SAPPHIRE STIRRUP RING, LATE 13TH/EARLY 14TH CENTURY, the hoop of D-shaped cross-section, with raised bezel inset at the apex with the original heart-shaped cabochon sapphire, the bezel with angled shoulders and flattened on the opposing sides, tapering towards the base, *diameter 20mm, width 2mm.* £1,500–£2,000

Provenance: From a 1960s Collection - the Property of a Lady.



63

A MEDIEVAL GOLD EMERALD STIRRUP RING, EARLY 14TH CENTURY, the hoop of D-shaped cross-section, the yellow gold with raised triangular-shaped bezel centred at the apex with the original oval cabochon-shaped emerald, the bezel with angled shoulders and recessed sides, the exterior to either side of the bezel with three raised grapes or mulberries and decorated with pellets and a stem, *diameter 20mm, width 1.5mm.* £1,600–£2,000

Provenance: This ring was found by a metal detectorist in Cambridgeshire in 2022. It has been recorded on the Portable Antiquities Scheme database Ref: CAM-1BD43B and disclaimed under the Treasure Act.

Several comparables are noted on the PAS database: ref LANCUM-7B7DAD is very similar in style and decoration, and DUR-688B7B, also with the three raised fruits to either side of the bezel.

Emeralds were thought to protect against gout and epilepsy and also to increase riches. Grapes are symbolic of rebirth, whilst the mulberry tree was the emblem of the Dukes of Norfolk.





64

A GOLD POSY RING, EARLY 17TH CENTURY, of rectangular cross-section and engraved to the inner band in Roman capitals 'I LIKE +MY+CHOYS' followed by a stem of foliage, diameter 17mm, width 3mm. £500–£700

Provenance: This ring was found by a detectorist at Runcton Holme, Norfolk and recorded on the Portable Antiquities database ref: NMS-8D314E.



65

A GOLD POSY RING, CIRCA 1660-1680, the wide rectangular-shaped hoop inscribed to the interior in italics 'Godlye .love .will .not .remove', maker's mark 'R' in an oval cartouche, diameter 21mm, width 5mm, ring size R. £500–£700

Provenance: Ex UK collection.

According to a PMI test on the XRF analyzer the gold is testing as purity 91.02%.

For other examples of rings bearing the same posy see the Ashmolean Museum, Oxford, Evans Collection (ref. AN1933.1586), the British Museum (ref. AF.1252, and AF.1253), the Griffin Collection (Inv. nos. 03486 and 03019), with a further close variation in the British Museum (ref: 1961,1202.178).



66

A LATE 17TH CENTURY GOLD POSY RING, CIRCA 1680-1700, the broad convex band with plain exterior, the interior inscribed 'Feare god love me' in spaced italics script, band width 6mm, ring size O. £600–£800

Provenance: This ring was discovered by a metal detectorist in Somerset in 2022. It has been recorded on the Portable Antiquities Scheme database, ref: SOM-752CD5, and disclaimed as Treasure, ref: 2022-T231.



67

A GOLD POSY RING, LATE 17TH CENTURY, the D-shaped hoop inscribed to the interior in italics 'Be - constant - to - the - end -', diameter 20mm. £400–£600

Provenance: Ex UK collection.



68

A GOLD POSY RING, EARLY 18TH CENTURY with plain exterior, the interior inscribed 'As god hath decread so we agred' in italic script, ring size W½. £500–£700



69

A GOLD POSY RING, 18TH CENTURY, the plain hoop of rectangular cross section, inscribed to the interior in large script 'All that I desier of thee is to feare god and love' followed by maker's mark 'IA' in a cartouche, diameter 21mm, band width 5mm, ring size O. £500–£700

Provenance: Ex UK collection.

According to a PMI test on the XRF analyzer the gold is testing as purity 85.14%.

For another recorded example of a ring bearing the same posy see the British Museum (ref: 1961,1202,283), late 17th century in date.

THE PROPERTY OF A LADY



70

A 22CT GOLD POSY RING, EARLY 18TH CENTURY, the plain D-shaped band inscribed to the interior in script 'God above increase our love', maker's mark 'DM' in gothic letters, ring size T. £400–£600

Provenance: From a 1960s Collection - the Property of a Lady.



71

AN 18CT GOLD POSY RING, 18TH CENTURY, the plain gold D-shaped inscribed to the interior in script 'Nodus . action amicitie', translates from the Latin as 'The act of friendship', maker's mark 'RC' in gothic style, ring size N. £800–£1,200

Provenance: From a 1960s Collection - the Property of a Lady.



72

A 9CT GOLD GATE-LINK BRACELET BY CHARLES GREEN & SON, with heart-shaped padlock, UK hallmark, length 21cm. £700–£900



73

TWO GEM-SET RINGS, the tapered band ring set to the front with graduated rows of brilliant-cut diamonds and centred with a step-cut emerald, together with a foil backed emerald ring, with foliate decoration to the shoulders, total diamond weight approximately 1.00 carat, ring sizes H½. £600–£800



74

A 9CT GOLD RING, 1966, of bombé form and textured basket weave design, London hallmark, maker's mark 'H.B', ring size N. £180–£220

75

A BICOLOUR BRACELET, of ropetwist design, stamped '750', length 22cm. £1,000–£1,200



76

A 9CT GOLD ALBERT CHAIN, the fancy-link chain with T-bar fitting and swivel clasp, stamped '9.375' throughout, maker's mark for John Grinsell & Sons, Birmingham, length approximately 33cm. £600–£700



77

A DIAMOND NECKLACE AND EAR STUD SUITE, the frontispiece set with brilliant-cut diamonds, with central flowerhead drop design, to a woven back chain, the ear studs en suite, total diamond weight approximately 3.20 carats, necklace length 40cm, ear stud length 15mm. £1,500–£2,000

According to a PMI test on an XRF analyzer the necklace is testing as 20 carat gold.



78

AN EMERALD AND DIAMOND RING, the oval-cut emerald within a geometric surround of square and tapered baguette-cut diamonds, total diamond weight approximately 0.65 carat, ring size K. £300–£500



79

THREE GEM-SET RINGS BY CHAUMET, each pavé-set to the front with brilliant-cut diamonds and set with a circular-cut ruby, emerald or diamond, each signed 'Chaumet', one numbered, one with London import mark for 18ct gold, one with French assay mark, maker's case, total diamond weight approximately 1.00 carat, ring sizes M–N. £1,500–£2,000

Accompanied by a Certificate of Authenticity from Chaumet, unnumbered and undated.

80

TWO GOLD ALBERT CHAINS, each fetter-link chain with T-bar fitting and swivel clasps, stamped '9.375', one chain with Birmingham assay mark, lengths approximately 34.5cm and 30.5cm respectively. £900–£1,000





81

A 9CT GOLD ALBERT CHAIN, of curb-link design, partial Birmingham hallmark, maker's mark 'B&S', length 39cm. **£1,200–£1,800**



82

A GOLD MOURNING RING, 1838, the outer black enameled band engraved 'IN.MEMORY.OF', the circular bezel set with a pearl. the interior inscribed in script 'Wm Hargreaves ob 25 Feb'y 1832 aet 58', maker's mark 'WE', London hallmark for 1838, ring size O½. **£200–£300**



83

A 19TH CENTURY GOLD MEMORIAL RING, with recessed black enamel detail and gold lettering to the exterior 'IN ME MO RY OF' with symmetrically carved scrolled foliate motifs between, the interior engraved in italics "Charles Lord Tenterden died 4 Nov, 1832 aged 70" hallmarked for 18ct gold, date letter for 1832, ring size O. **£400–£600**

Provenance: This ring was found by a metal detectorist.

The ring is in memory of **Charles Abbott, 1st Baron Tenterden PC** (1762–1832). A barrister and judge, he served as Lord Chief Justice of the King's Bench between 1818 and 1832. He was appointed to the peerage in 1827.

84

A 9CT GOLD NECKLACE AND BRACELET SUITE, each designed as an Albert chain with engraved oval-shaped links, UK hallmarks, necklace length 47cm, bracelet length 20cm. **£500–£700**





85

A LATE 19TH CENTURY GARNET PENDANT, of target design, set throughout with vari-cut garnets, mounted in silver and gold, (one garnet deficient), length 8.5cm. £200–£300,

86

A 19TH CENTURY AMETHYST AND PEARL BROOCH, the oval mixed-cut amethyst in foiled closed back setting, within seed pearl border, mounted in gold, length 26mm. £100–£120



87

AN AMETHYST AND SEED PEARL BROOCH, CIRCA 1900, the openwork lozenge-shaped brooch set with a cushion-shaped amethyst with further amethysts to either side and seed pearl highlights, mounted in gold, stamped '585', length 5cm. £300–£400



88

A LATE 19TH CENTURY DIAMOND BANGLE, the hinged bangle set to the front with three old brilliant-cut diamonds, with granulation and ropetwist decoration, stamped '15CT', inner dimensions 4.6 x 5.5cm. £400–£600



89

A 9CT GOLD SERPENT BANGLE, 1923, with applied partial coiled serpent decoration, the head with green gem-set eyes, maker's mark for Payton, Pepper & Sons Ltd, Birmingham hallmark, inner dimensions approximately 7.5 x 7cm. £300–£400



90

A 19TH CENTURY MEMORIAL BROOCH FOR HENRY ROXBY BENSON, the oval onyx panel applied with initials 'H R B', inset with rose-cut diamonds, the reverse engraved with inscription 'Henry Roxby Benson born Nov. 2. 1818. died Jan. 23.1892. M.F.B.'; mounted in gold, length 34mm.

£300–£500

Henry Roxby Benson (2 November 1818–23 January 1892) was a 19th century British General.

From a distinguished Welsh family, Henry was the second son of the merchant Thomas Starling Benson and his second wife Elizabeth Meux.

In 1840 he joined the 17th Lancers, and quickly rose through the ranks becoming Lieutenant in 1842, Captain in 1845 and Major in 1854. He served in the Crimean Campaign, 1854–1855, notably at the Battle of the Tchernaya and the siege and fall of Sebastopol.

In 1856 he was promoted to Lieutenant-Colonel of the 17th. He subsequently served in Indian, leading to further promotion. He was appointed CB in 1861 and continued to rise until his final promotion to the rank of General 20 years later.

The initials MFB on the memorial brooch may refer to his daughter Mary Florance Benson, one of his nine children.



91

THREE 19TH CENTURY SHELL CAMEO BROOCHES, the two larger brooches within ornate frames, the third with scalloped bead detailing, lengths 7.5cm–42mm. (3)

£150–£200



92

A SHELL CAMEO BROOCH CARVED TO DEPICT DANTE ALIGHIERI, after the late 15th century portrait by Sandro Botticello, the plain polished mount stamped '9CT', length 5cm.

£80–£100



93

A MID 19TH CENTURY HARDSTONE CAMEO BROOCH, carved to depict the portrait of *Beatrice Cenci*, within an ornately designed bloomed gold frame, with bead, scrollwork, ropetwist and fruiting vine decoration, fitted case, length 6cm. £1,000–£1,500

The portrait of Beatrice Cenci, the young woman depicted in the white robes of a Roman sybil, was formerly attributed to Guido Reni, but now considered to be by the artist Ginevra Cantofoli of Bologna, circa 1600, oil on canvas, at the Galeria Nazionale d'Arte Antica, Rome.

Beatrice Cenci, a young Roman noblewoman, was executed for the murder of her father, Count Cenci, in 1599, at the age of just 22. The story of her imprisonment by her father and the years of brutality she suffered leading up to his murder caused shock waves throughout Europe, and proved a continued source of inspiration in both art and literature for centuries to come including the Romantic poets Shelley and Stendahl.

94

A LATE 18TH CENTURY MEMORIAL RING, the oval glazed panel revealing a hairwork panel with applied initials 'AH', with blue and white enamel border inset with lettering 'OB 24 SEP 1789 AE 92', between scroll engraved shoulders, mounted in gold, ring size P. £400–£600



95 Y

A LATE 18TH / EARLY 19TH CENTURY BROOCH, of shaped oval form, the glazed panel painted *en grisaille* on ivory to depict a mother and daughter playing a chamber organ, within outer seed pearl border, with pendant attachment, length approximately 39mm. £300–£500

Ivory Submission reference Z5JGJUS5.

96

AN ANTIQUE CAMEO AND SEED PEARL PENDANT, the glazed shell cameo carved to depict a classical female figure and set within a seed pearl surround, mounted in gold, later adapted from a clasp, length approximately 40mm. £150–£200



All lots are subject to extra charges which may be viewed in Ts and Cs 3, 4, 5 and 10 at the back of this catalogue.



97

A SYNTHETIC CORUNDUM BROOCH/PENDANT, the oval-cut gemstone within a textured leaf and fruiting vine surround, stamped 'K18', length 39mm. £300–£400



98

AN 18CT GOLD SAPPHIRE AND DIAMOND BROOCH, 1967, the openwork brooch of zig-zag outline formed from staggered and textured bars, with circular-cut sapphire and brilliant-cut diamond highlights, maker's mark 'EHE', London hallmark, length 5cm. £600–£800



99

A SAPPHIRE RING, the circular-cut green sapphire in an abstract sculptural mount, French maker's mark possibly for Isaac Meyrovitch, ring size L–M. £700–£900



100

AN 18CT GOLD OPAL DOUBLET DRESS RING, 1972, of abstract flowerhead design, each of the textured petals set with an opal doublet, UK hallmark, ring size L. £600–£800

101

A PAIR OF EARLY 20TH CENTURY 9CT GOLD ALBERT CHAINS, each curb-link chain with swivel clasps, one with T-bar fitting, the links stamped '9' and '9 375' respectively, lengths approximately 33.5cm and 38.5cm. £1,000–£1,200



102

AN AMETHYST AND DIAMOND SUITE BY H. STERN, the pendant set with a pear-shaped amethyst beneath a brilliant and single-cut diamond surmount, the ear studs en suite, stamped '750', maker's mark, total diamond weight approximately 0.35 carat, pendant length 30mm. **£500-£700**



103

A PAIR OF AMETHYST AND SEED PEARL EAR PENDANTS, the seed pearl flowerhead surmounts each suspending a pear-shaped amethyst drop, length 30mm. **£150-£200**



104

A PAIR OF 18CT GOLD GARNET AND SAPPHIRE EARRINGS, each garnet cabochon within a textured surround set with sapphire cabochons and beaded detailing, UK hallmark, maker's mark 'PJL', diameter 25mm. **£300-£400**

105

A 9CT GOLD AND AMETHYST SINGLE STONE RING, 1972, the oval-cut amethyst claw-set to a beaded mount and scrollwork shoulders, London hallmark, ring size H½. **£100-£150**



106

A GOLD BRACELET AND RING SUITE, CIRCA 1970, the articulated bracelet composed of pierced abstract panels, the ring en suite, length 18.5cm, ring size L. **£1,300-£1,400**

According to a PMI test on an XRF Analyzer the bracelet is testing as 17ct gold.





107 Y

A PAIR OF 19TH CENTURY CORAL EARRINGS, the composite ear pendants composed of a carved *Corallium Rubrum* 'rose bud' surmount suspending a detachable drop, mounted in gold, length 5cm. £180-£220



108

AN EARLY 19TH CENTURY CARNELIAN PANEL RING, the curved panel inscribed with Latin script '*Amantium irae amoris integratio est*', the inscription translating as '*The quarrels of lovers are the renewal of love*', mounted in gold, ring size N½. £500-£700



109

A 9CT GOLD BRACELET, of stylised faceted and curb-link design, UK hallmark, length 19.5cm. £200-£300



110 Y

A CORAL BRACELET, the *Corallium Rubrum* beads with capped terminals and chain connectors, with polished drop and 'evil eye' charm, to a brilliant-cut diamond clasp, stamped '750', length 21cm. £600-£800



111 Y

A CORAL TORSADE BRACELET, the multi-row bracelet of *Corallium Rubrum* beads with polished roundel spacers, the foliate terminals each with one leaf pavé-set with brilliant-cut diamonds, French import marks, total diamond weight approximately 0.30 carat, length 19cm. £1,500-£2,000



112 Y

A CORAL SUITE, comprising a *Corallium Rubrum* bead necklace, ear clips and brooch, the necklace composed of a single row of uniform beads, the ear clips a single bead on hinged fittings, the brooch of marquise cluster design, necklace length 42cm. £500-£800

113

A 9CT GOLD BRACELET BY CROPP & FARR, of brick-link design, UK hallmark for 1996, maker's mark, length 20cm. £1,000-£1,500



114

AN EARLY 20TH CENTURY RUBY, PEARL AND DIAMOND STICK PIN, the cushion-shaped terminal set with a quatrefoil of old brilliant-cut diamonds and calibr -cut rubies, spaced by rose-cut diamond highlights and centred with a bouton-shaped pearl, to a white enamel border, mounted in gold, (pearl untested), cased by Skinner & Co., length 7cm. **£300-£400**



115

A LATE 19TH CENTURY DIAMOND EAGLE STICK PIN, realistically modelled, set throughout with rose and old brilliant-cut diamonds, mounted in silver and gold, length 7.5cm. **£300-£400**



116

A LATE 19TH CENTURY DIAMOND 'BEAR AND RAGGED STAFF' STICK PIN, set throughout with rose-cut diamonds and with gem-set eyes, mounted in silver and gold, cased, length 6.7cm. **£260-£300**

The Bear and Ragged Staff is an heraldic emblem or crest associated with the Earls of Warwick.

117

AN ANTIQUE HORSE'S HEAD STICK PIN, FRENCH, realistically modelled, the head with enamel decorated bridle and neck collar and sliding belcher-link chain reins, French assay mark, indistinct maker's mark, length 9cm. **£220-£300**





118

AN ARROWHEAD STICK PIN, the knapped hardstone arrowhead with slightly curved barbs and ropetwist detailing, stamped '14K', length 6.5cm. £80–£100

119

A LATE 19TH CENTURY GOLD STICK PIN BY WIÈSE, FRENCH, the roundel modelled as a griffin eating berries, signed 'WIESE', maker's mark, French assay mark, length 7.8cm. £300–£400

In 1890, Louis Wièse registered his own maker's mark, (distinct from his father Jules's earlier maker's mark), the new mark showed the name 'WIESE' with a star above and below, in a horizontal lozenge, as seen on this stickpin.

120

A LATE 19TH CENTURY 'PUNCH' STICK PIN, the 'Punch' head terminal realistically decorated in polychrome enamel, with rose-cut diamond and seed pearl detailing, mounted in silver and gold, cased by S. J. Phillips, length 6cm. £300–£400



121

FOUR ANTIQUE STICK PINS, comprising a hardstone and diamond example modelled as an eye by Wièse, French, signed, together with three additional pins mounted with an enamel 'clay' pipe, a drop-shaped pearl with diamond set cap, and a vari-cut diamond set example with boule terminal, mounted in silver and gold, (pearl untested), first length 7.5cm. £120–£200



122

A CULTURED PEARL NECKLACE, the multi-row fancy-link chain leading to a tassel drop set with cultured pearls of various tints, stamped '18KT', length 43cm. **£500-£700**



123

A BLACK DIAMOND AND DIAMOND PENDANT, set with a pear-shaped treated black diamond, within a surround of brilliant-cut diamonds, the bale similarly-set, principal diamond weight very approximately 9.00 carats, remaining total diamond weight approximately 1.40 carats, length 35mm. **£700-£900**



124

A BLACK DIAMOND AND DIAMOND CLUSTER RING, the step-cut treated black diamond within a surround of brilliant-cut diamonds, between similarly-set bifurcated shoulders, stamped 'K18', principal diamond approximately 3.30 carats, ring size L. **£300-£500**



125

A BLACK DIAMOND AND DIAMOND CLUSTER RING, the brilliant-cut treated black diamond in a surround of similarly-cut diamonds, stamped 'PLAT', principal diamond weight approximately 3.70 carats, remaining total diamond weight approximately 1.20 carats, ring size O. **£700-£900**



126

A PAIR OF DIAMOND SKULL AND SERPENT CUFFLINKS BY THEO FENNEL, 2007, the skulls pavé set with brilliant-cut treated black diamonds, the entwined serpents set with similarly-cut diamonds, to swivel back fittings in the form of a polished bone, mounted in 18ct white gold, maker's mark, London hallmark, skull length 22mm. **£800-£1,200**

127

A DIAMOND NECKLACE, designed as a series of hoops set with tapered baguette and brilliant-cut diamonds, suspended from an associated 18ct gold fancy-link chain, UK hallmarks, total diamond weight approximately 1.10 carats, pendant length 48mm, chain length 45cm. £400–£600



128

A PAIR OF DIAMOND CLUSTER EAR STUDS, of target design, each set with a brilliant-cut diamond within a surround of similarly-cut diamonds, total diamond weight approximately 1.65 carats, length 12mm. £1,000–£1,500

Accompanied by a report card from E.G.L. South Africa stating that the diamond weighing 0.64 carat is F colour, SI1 clarity. Report number 80100419/48451.

Accompanied by a report card from E.G.L. South Africa stating that the diamond weighing 0.66 carat is F colour, SI2 clarity. Report number 80100622/48471.

129

A DIAMOND 'MY GIRL' RING BY SHIMANSKY, the openwork band set with a cut-cornered square-shaped diamond, weighing 1.00 carat, signed, stamped '18K', ring size M. £1,500–£2,000



Accompanied by a report from GIA stating that the diamond is G colour, VVS2 clarity. Report number 2105932692, dated 27 July 2009.

Accompanied by a Certificate of Authenticity from Shimansky. Report number 228837.



130

A DIAMOND CLUSTER RING, of stylised flowerhead design, set with brilliant and single-cut diamonds, total diamond weight approximately 0.35 carat, ring size J–K. £150–£200

131

A DIAMOND BRACELET, the pierced disc-shaped links alternately set with brilliant-cut diamonds, total diamond weight approximately 4.00 carats, length 19.5cm. £1,500–£1,800





132

AN EARLY 20TH CENTURY DIAMOND PENDANT, of whiplash design, the pierced pendant with hinged garland drop and set throughout with old brilliant and rose-cut diamonds, with calibr -cut sapphire highlights, the whole suspended by a trace-link chain, *pendant length 5.5cm.* **£300-£500**



133

A PAIR OF SAPPHIRE AND DIAMOND CLUSTER EAR STUDS, the oval mixed-cut sapphires claw-set within a surround of brilliant-cut diamonds, stamped '18K750', maker's mark 'BH', *length 7.5mm.* **£200-£300**



134

A DIAMOND ETERNITY RING, channel-set throughout with an undulating row of brilliant-cut diamonds, mounted in 18ct gold, UK hallmark, *total diamond weight approximately 1.00 carat, ring size L½.* **£300-£400**



135

A SAPPHIRE RING AND AN ART DECO EMERALD RING, the first set with a graduated row of square-cut sapphires within a surround of single-cut diamonds, the second set with a square-cut emerald within a surround of single-cut diamonds, stamped 'PT', *total diamond weight approximately 0.65 carat, ring sizes M.* **£300-£500**



136

A PEARL AND DIAMOND THREE STONE RING, the central pearl between two claw set brilliant-cut diamonds, (pearl untested), stamped 'PLAT', *ring size R.* **£300-£400**



137

A DIAMOND LINE NECKLACE, set with a continuous row of brilliant-cut diamonds, to a polished brick-link back chain, stamped '750', total diamond weight approximately 5.15 carats, length 43cm.

£1,500–£2,000

138

AN EARLY 20TH CENTURY CULTURED PEARL AND DIAMOND PANEL RING, millegrain set with an alternating double row of cultured half-pearls and old brilliant-cut diamonds, mounted in platinum, total diamond weight 1.00 carat, ring size R.

£600–£800



139

A FANCY-LINK BRACELET, designed as an alternating series of bicoloured cross and scroll motifs, Portuguese assay mark, stamped '800', length 19cm.

£200–£300





140

A ROYAL PRESENTATION GEORGE V CYPHER BROOCH, decorated in red and white enamel, with diamond highlights, mounted in gold, in fitted case by Collingwood Ltd, with gilt embossed Royal cypher to the cover, length 30mm. £600–£800

Provenance: This brooch was bequeathed to Mary Collier, a close personal friend of Mary Coulter, thence by family descent to the present vendor.

Mary B. Coulter was awarded the Royal Victorian Medal in January 1945 in respect of her services as a nurse to Princess Beatrice over a period of 15 years.

This medal, together with two further medals awarded to Miss Coulter - silver; Jubilee 1935; Coronation 1937, and three related nursing badges, comprising General Nursing Council, silver enamel, the reverse inscribed, 'M.B. Coulter, S.R.N., 31725, 20.6.24'; Royal British Nursing Association, bronze, the reverse inscribed, 'Mary B. Coulter, 7268'; and Manchester Royal Infirmary, bronze, the reverse numbered '449' and inscribed, 'M.B. Coulter', were sold at Christie's Sale No. 1264, 30 November 2000, Lot 346.

This brooch was presented by King George to **Mary Coulter** in thanks for her services as a nurse to H.R.H. Princess Beatrice (Princess Henry of Battenburg).

Princess Beatrice (Beatrice Mary Victoria Feodore) (1857-1944), later Princess Henry of Battenberg, was the fifth daughter and youngest child of Queen Victoria and Prince Albert.





141

A PAIR OF ROYAL PRESENTATION 9CT GOLD AND ENAMEL WORLD TOUR CUFFLINKS, PRESENTED BY H.R.H. PRINCE PHILIP, DUKE OF EDINBURGH TO WALTER BENNETT, HIS PERSONAL CHAUFFEUR, the oval plaques with crowned initial P against green enamel ground, the second plaque with white, blue, red and green enamels depicting the world tour logo, a map of Antarctica, with the date 1956-1957, beneath crown, with chain connectors, maker's mark H.H.P. for Henry Hodson Plante, hallmarked for Birmingham 1956, in original fitted case by Plante, with gilt embossed Royal cypher to the lid, *plaque length 17.5mm.*

Accompanied by a letter from Buckingham Palace written on behalf of the Duke of Edinburgh dated 31 May 1957, reading:

"Dear Walter

The Duke of Edinburgh has asked me to send you the enclosed photographs and cufflinks with his sincere thanks for all you did during his recent tour.

Yours sincerely"

signed by Lieut.-General Sir Frederick A.M. Browning KCVO, KBE, DSO,

together with a photograph of the Royal Staff on board the Royal Yacht Britannia with printed signature of the Duke of Edinburgh, a copy of a photograph of the Full Ship's Company, and negatives and personal photographs of the Tour taken by Walter Bennett.

£500-£800

Provenance: Walter Bennett was personal chauffeur to the Duke of Edinburgh between 1949-1963.

The World Tour of 1956-57 started at the 1956 Olympic Games in Melbourne, Australia, and continued to New Zealand, Antarctica, the Falkland Islands, Africa and the Mediterranean. Prince Philip travelled in the newly commissioned Royal Yacht Britannia, the lengthy trip covering 38,000 miles.





142

A REVERSE CARVED AND PAINTED CRYSTAL INTAGLIO NECKLACE, the frontispiece designed as alternating snaffle bit and hunting horn motifs, and spaced by three reverse carved intaglios each depicting a hound, fox or hunting scene, to fancy-link chain, stamped '14K', length 42cm.

£1,200–£1,500



143

AN EARLY 20TH CENTURY GOLD DEER BAR BROOCH, realistically modelled as a running deer, with textured finish and gem-set cabochon eye, stamped '15C', length 8.5cm.

£150–£200



144

A LADY'S WATCH BY ROLEX WITH REVERSE CARVED AND PAINTED CRYSTAL INTAGLIO BRACELET, the watch with circular dial, manual winding movement and applied baton indexes, the bracelet links designed as crossed shotgun and cartridge motifs, with two reverse carved and painted cabochons, each depicting a game bird in flight, stamped '14K', length 19.5cm.

£500–£600

145

AN ANTIQUE GOLD CHAIN AND CROSS PENDANT, the pierced fancy-link gold necklace chain suspending a later silver gilt filigree cross pendant, pendant length 8cm. £400–£600

According to a PMI test on the XRF Analyzer, the gold chain is testing as 18ct and the clasp as 11ct.



146

A 19TH CENTURY GOLD AND HARDSTONE MEMORIAL LOCKET, of octagonal form, the hinged locket set to the front with a hardstone panel with engraved monogram, opening to reveal two glazed frames containing a photograph of a Victorian lady and hairwork compartment opposite, the reverse inscribed 'BORN NOV'R 18TH 1845...SARAH KENGAN...my precious Mother... DIED OCT'R 14TH 1884', the whole suspended by an 18ct gold T-bar, length 7cm. £300–£400



147

A LATE 19TH CENTURY GOLD AND DIAMOND LOCKET, FRENCH, the hinged, shield-shaped locket with applied griffin motif decoration and old brilliant-cut diamond highlight, French assay marks, length 40mm. £400–£600

According to a PMI test on an XRF Analyzer, the locket is testing as 18ct gold.



148

A LATE 19TH CENTURY GOLD LOCKET, realistically modelled as a book, with engraved foliate decoration, opening to reveal two oval frames, length 23mm. £360–£400

149

A 19TH CENTURY GOLD CONVERTIBLE LOCKET PENDANT, opening to reveal a vacant compartment and with further compartment behind enclosing a mirror, the base inset with pull-out sliding panel and miniature pencil, length 32mm. £1,100–£1,200





150

A DIAMOND WREATH BROOCH, the bow surmount above an openwork brooch of foliate and floral design, set throughout with brilliant and single-cut diamonds, total diamond approximately weight 1.45 carats, length 35mm. £400–£600



151

AN EARLY 20TH CENTURY AQUAMARINE AND DIAMOND BAR BROOCH, the three vari-cut aquamarines spaced by old brilliant and rose-cut diamonds, mounted in platinum, length 7.5cm. £800–£1,000



152

AN ART DECO DIAMOND BAR BROOCH, set with a graduated row of transitional and old brilliant-cut diamonds, the gallery with engraved scroll detailing, mounted in platinum, total diamond weight approximately 3.70 carats, length 5.8cm. £1,000–£1,500



153

A DIAMOND BAR BROOCH, of knifewire design, set with five graduated old brilliant-cut diamonds, total diamond weight approximately 1.10 carats, length 44mm. £400–£600



154

AN EARLY 20TH CENTURY DIAMOND SET BAR BROOCH, set throughout with old brilliant-cut diamonds, mounted in platinum and gold, total diamond weight approximately 2.10 carats, length 45mm. £500–£600



155

AN ART DECO DIAMOND CLIP, the pierced clip of tapered form and set throughout with vari-cut diamonds, *total diamond weight approximately 4.00 carats, length 40mm.* £1,500–£2,000

156

A PAIR OF DIAMOND EARRINGS, of pierced arrow form, set throughout with brilliant-cut diamonds, stamped '18K', *total diamond weight approximately 0.70 carat, length 12mm.* £260–£300



157

A DIAMOND BOW BROOCH, set throughout with brilliant and baguette-cut diamonds, stamped '14K', *total diamond weight approximately 1.50 carats, length 35mm.* £300–£400



158

TWO DIAMOND BOW BROOCHES, both realistically modelled, the larger bow by Laing the Jeweller, set throughout with brilliant-cut diamonds, mounted in platinum, the smaller brooch an early 20th century example, set throughout with old brilliant-cut diamonds, mounted in platinum and gold, first with Edinburgh hallmark for 2020, maker's mark, *total diamond weight approximately 2.00 carats, lengths 32mm and 23mm.* £600–£800



Partially illustrated

159

A 9CT GOLD BOW NECKLACE AND 9CT GOLD CURB-LINK CHAIN, the first ropetwist chain leading to a polished bow frontispiece, together with a flattened curb-link chain, London import marks for 1991 and 1985 respectively, *lengths 49cm and 51cm.* £300-£360



160

A BROOCH AND EARRING SUITE BY SAKS FIFTH AVENUE, the scroll-shaped brooch set with a row of circular-cut white cubic zirconia, the earrings en suite, signed 'SAKS', stamped '583', *brooch length 40mm.* £100-£150



161

A DIAMOND RING, of stylised geometric form, the principal brilliant-cut diamond claw-set within a semi square surround of similarly-cut diamonds, *total diamond weight approximately 0.80 carat, ring size L½.* £600-£800



162

A DIAMOND DRESS RING, the domed tapered band set with trios of channel-set brilliant-cut diamonds, stamped '9K', *total diamond weight approximately 0.90 carat, ring size U.* £200-£300



163

AN 18CT GOLD DIAMOND RING, the tapered band set with an old brilliant-cut diamond, London hallmark, *diamond weight approximately 0.35 carat, ring size R-S.* £600-£800

164

TWO ANTIQUE ALBERT CHAINS, each of the 9ct gold fancy-link chains with T-bar fittings and swivel clasps, Birmingham assay marks, *lengths 36 and 37.5cm respectively.* £900-£1,200



Partially illustrated

165

A **SAPPHIRE RING**, the sapphire cabochon collet-set to a tapered band with applied chain-link decoration, stamped '18K', ring size M. **£400-£600**



166

A **LAPIS LAZULI RING**, the lapis lazuli sugarloaf cabochon in an odeonesque mount, stamped '18K', ring size very approximately P-S (hoop off round). **£400-£600**



167

A **LAPIS LAZULI AND PEARL DRESS RING**, the oval lapis lazuli cabochon collet-set within a surround of seed pearls, to a reeded band, mounted in gold, Portuguese assay marks, ring size approximately L-L½. **£300-£400**



168

A **STAR SAPPHIRE AND DIAMOND RING**, the oval star sapphire cabochon with a brilliant-cut diamond to either side, between scrolled shoulders, mounted in 18ct gold, UK hallmark, total diamond weight approximately 0.30 carat, ring size L-M. **£200-£300**



169

AN **18CT GOLD TWO ROW DIAMOND RING**, the tapered band tension-set to the front with a double row of brilliant-cut diamonds, London hallmark for 1994, total diamond weight approximately 1.80 carats, ring size L. **£500-£600**



170

AN 18CT GOLD AND DIAMOND BRACELET, the polished curb-link chain spaced by a brilliant-cut diamond panel, with similarly-set links and clasp, stamped '750', Italian assay mark, *total diamond weight approximately 1.35 carats, length 18.5cm.* £1,600–£2,000



171

A DIAMOND BRACELET BY CARTIER, CIRCA 1960, the fancy-link chain with interlocking pear-shaped motifs set with graduated brilliant-cut diamonds, mounted in 18ct gold, signed 'Cartier Paris', numbered '224290', French assay mark, partial London import mark, later maker's pouch, *total diamond weight approximately 1.65 carats, length 18cm.* £1,800–£2,200



172

AN 18CT GOLD CHARM BRACELET BY CARTIER, suspending seven horticultural themed charms, including a wheelbarrow, trowel, watering can and scarecrow, signed 'Cartier', Swiss assay mark, European convention mark, numbered, *length 18cm.* £2,000–£3,000



173

A SAPPHIRE AND DIAMOND NECKLACE BY ADLER, the curb-link chain leading to terminals each set with step and brilliant-cut diamonds around a heart pavé; set with brilliant-cut diamonds and with a heart-shaped sapphire to the centre, signed, stamped '750', French import mark, *total diamond weight approximately 1.50 carats, length 44cm.*

£3,000–£5,000

174

A DIAMOND COLLAR NECKLACE, the articulated collar channel-set throughout with baguette-cut diamonds, stamped '750', total diamond weight approximately 8.50 carats, length 36cm.

£3,000–£4,000



175

A SAPPHIRE AND DIAMOND LINE BRACELET, the brilliant-cut diamonds spaced by circular-cut sapphire collets, stamped '18K', total diamond weight approximately 0.80 carat, length 18cm. £400–£500



176

A RUBY AND DIAMOND LINE BRACELET, the oval-cut ruby and brilliant-cut diamond clusters spaced by similarly-set navette-shaped links, stamped 'Au750', total diamond weight approximately 1.90 carats, length 18cm.

£2,600–£3,000

177

A PASTE NECKLACE AND EARRINGS, the necklace of 19th century garland design, set with step-cut green pastes and circular-cut white pastes, closed-back settings throughout with engraved detailing to the reverse, on a cable-link chain, the earrings of complimentary design, necklace stamped 'STERLING', necklace length 45cm, earring length 25mm. £150-£200



178

A SAPPHIRE AND DIAMOND THREE STONE RING, the round-cut sapphire between two brilliant-cut diamonds, total diamond weight approximately 0.60 carat, ring size R. £300-£400



179

AN ART DECO DIAMOND RING, set with two old brilliant-cut diamonds in a faceted mount set throughout with old brilliant and single-cut diamonds, mounted in platinum, misstruck stamp, total diamond weight approximately 1.00 carat, ring size M. £300-£500



180

A LATE 19TH CENTURY SAPPHIRE AND DIAMOND FIVE STONE RING, alternately set with circular-cut sapphires and old brilliant-cut diamonds, mounted in gold, total diamond weight approximately 0.65 carat, ring size S. £800-£1,000



181

A SAPPHIRE AND DIAMOND LINE BRACELET, set throughout with oval mixed-cut sapphires spaced by pairs of single-cut diamonds, total diamond weight approximately 0.85 carat, length 18cm. £400-£600



182

A DIAMOND NECKLACE, of entwined design, set throughout with graduated brilliant-cut diamonds, to a fancy curb-link back chain, *length 43cm.* £400–£600

According to a PMI test on the XRF analyzer the gold is testing as 19-20ct gold.



183

A LATE 19TH CENTURY DIAMOND SINGLE STONE RING, the old cushion-cut diamond claw-set to a tapered band, mounted in gold, *diamond weight approximately 0.45 carat, ring size N.* £300–£400

184

A FANCY-LINK BRACELET, of bead and ropetwist design, Portuguese assay mark, *length 21cm.* £500–£700



185

AN ANTIQUE 9CT GOLD ALBERT CHAIN, the fancy-link chain with T-bar fittings and swivel clasps, Birmingham assay marks, *length 38.5cm.* £400–£600



186

A GUARD CHAIN, of fancy-link design, *length 106cm.* £400–£500

According to a PMI test on an XRF Analyzer the chain is testing as 16ct gold. The later clasp is base metal.



187

A DIAMOND NECKLACE, the flattened ropetwist chain leading to an articulated brilliant-cut diamond set drop, stamped '375', total diamond weight approximately 1.55 carats, length 43cm. £600-£800



188

A PAIR OF DIAMOND EARRINGS, each foliate surmount set with brilliant and marquise-cut diamonds and suspending a brilliant-cut diamond of yellow tint, (diamonds untested for natural colour), stamped 'PT950', total principal diamond weight approximately 2.25 carats, length 16mm. £1,000-£1,500

189

A DIAMOND CLUSTER RING, set with a pear-shaped diamond of yellow tint, weighing 0.84 carat, within a surround of brilliant-cut diamonds, rubbed UK hallmark, remaining total diamond weight approximately 0.90 carat, ring size N-O. £1,000-£1,500



Accompanied by a verbal report from GCS. Please contact department for details.



190

TWO ALBERT CHAINS, comprising a 9ct gold antique fancy-link chain with T-bar fitting and swivel clasp, together with a bicolour curb-link chain with double swivel terminals, first length approximately 34.5cm. £600-£800

According to a PMI test on an XRF Analyzer, the bicolour chain is testing as platinum and 17ct gold.



191

A 9CT GOLD ALBERT CHAIN, the curb-link chain with connecting jump rings (one damaged) and swivel clasp terminals stamped '9.375' throughout, length approximately 46cm. £700-£800





192

A RUSSIAN ENAMEL EGG PENDANT, CIRCA 1900, the blue guilloché enamel egg suspended from an unassociated 18ct gold fancy-link chain, partial maker's mark possibly for Fyedor Pyekin or Fedor Afanasiev, Russian standard mark, chain with UK hallmarks, pendant length including bale 24mm. **£800–£1,200**

193

A GREEN ENAMEL EGG NECKLACE, the cable-link chain with baton-shaped connectors decorated with green and white guilloché enamel, suspending an egg-shaped drop similarly decorated in green with black enamel dots, with a collar of single-cut diamonds to the centre and a seed pearl surmount, mounted in 18ct gold, UK hallmarks, fitted case by Garrard & Co. Ltd., pendant length including bale 35mm, chain length 59cm. **£1,500–£2,000**



194

A PAIR OF PASTE EAR CLIPS, FRENCH, each claw-set with a green paste cabochon, stamped '750', French assay mark, maker's mark 'DR', diameter 15mm. £500–£600

195

A TANZANITE AND DIAMOND RING, the oval-cut tanzanite between tapered shoulders set with brilliant and baguette-cut diamonds, stamped '18K', total diamond weight approximately 0.40 carat, ring size L½. £500–£700



196

A TOURMALINE AND DIAMOND DRESS RING, the mixed-cut barrel-shaped green tourmaline within a surround of brilliant-cut diamonds, stamped '750', total diamond weight approximately 0.80 carat, ring size M–N. £400–£600

197

A SYNTHETIC STAR SAPPHIRE AND DIAMOND RING, the oval synthetic star sapphire cabochon between baguette and brilliant-cut diamond shoulders, mounted in 18ct gold, UK hallmark, ring size M–N. £300–£500



198

A TOURMALINE BANGLE, the hinged bangle of knifewire form and set to the front with a mixed-cut green tourmaline, inner dimensions 5.5 x 4.8cm. £300–£500





199

A DIAMOND NECKLACE, the drop set with a graduated row of brilliant-cut diamonds, suspended from a fancy-link chain, stamped '750', total diamond weight approximately 1.10 carats, chain length 46cm. £200–£300



200

A TOURMALINE AND DIAMOND DRESS RING, the oval-cut tourmaline set within a swirl surround of brilliant-cut diamonds leading down one shoulder, total diamond weight approximately 0.75 carat, ring size approximately K. £800–£1,200



201

THREE DIAMOND RINGS, comprising a diamond single stone ring, a diamond three stone ring, and a diamond dress ring set with marquise and baguette-cut diamonds, two with UK hallmarks for 18ct gold, total diamond weight approximately 2.25 carats, ring sizes L–N. £500–£700



202

THREE DIAMOND SINGLE STONE RINGS, each set with a brilliant-cut diamond, one ring stamped 'Pt 900', two stamped '585', total diamond weight approximately 1.35 carats, ring sizes L, T and L½. £800–£1,000

203

A 9CT CURB-LINK ALBERT CHAIN, 1909, the graduated curb links with T-bar fitting and swivel hook terminal, Birmingham hallmark length approximately 32.5cm. £900–£1,000



204

A RUBY AND DIAMOND PENDANT, the pear-shaped ruby set beneath a princess-cut diamond, suspended from an 18ct gold cable-link chain, UK hallmark, *pendant length 12mm, chain length 46cm.* £150-£200



205

A TRIPLE CLUSTER RING, set with a marquise-cut ruby, emerald and diamond flowerhead cluster, to a reeded band, stamped '18K', *total diamond weight approximately 0.50 carat, ring size G-H.* £400-£600

206

A GEM-SET FLOWERHEAD RING, of crossover design, the petals set with vari-coloured pear-shaped sapphires, with a brilliant-cut diamond to the centre and similarly-set surround, mounted in 18ct gold, UK hallmark, *total diamond weight approximately 0.60 carat, ring size M.* £400-£600



207

A GEM-SET CLASP, set throughout with circular-cut ruby and single-cut diamond clusters, (one ruby deficient), stamped '750', *length 25mm.* £400-£500

208

AN EMERALD AND DIAMOND BRACELET, the baton-shaped links channel-set with calibr -cut emeralds and brilliant-cut diamonds, stamped '750', *total diamond weight approximately 0.40 carat, length 18cm.* £600-£800





209

AN OPAL AND DIAMOND BROOCH / PENDANT, the oval opal cabochon within a surround of brilliant-cut diamonds with step-cut diamonds to either side, the similarly-set bale detachable, suspended from an 18ct gold fancy-link chain, with threaded brooch fitting, chain with UK hallmark, total diamond weight approximately 5.00 carats, pendant length including 42mm, chain length 47cm. £2,000–£3,000



210

A PAIR OF OPAL AND DIAMOND EAR STUDS, each set with a marquise-shaped opal cabochon within a surround of brilliant-cut diamonds, mounted in 18ct gold, UK import mark, total diamond weight approximately 1.00 carat, length 15mm. £200–£300



211

AN OPAL AND DIAMOND CLUSTER RING, set with an oval opal cabochon within a surround of brilliant-cut diamonds, mounted in 18ct gold, UK hallmark, partial maker's mark, total diamond weight approximately 1.40 carats, ring size O. £800–£1,200

212

AN OPAL AND DIAMOND BROOCH, the spray of cabochon opals, accented with brilliant-cut diamonds, stamped '585', length 34mm. £100–£150



213

A PAIR OF EARLY 20TH CENTURY GOLD ALBERT CHAINS, each curb-link chain spaced by a T-bar fitting and with swivel clasp terminals, stamped '9.375' and '15.625' respectively, the 9ct chain with graduated links, lengths approximately 39.5cm and 38cm. £1,100–£1,200





214

AN OPAL AND DIAMOND PENDANT, the cushion-shaped pendant collet-set with an opal cabochon, to an incorporated bale set with brilliant-cut diamonds, the mount with brushed finish, maker's mark 'FH', stamped '750', suspended by an unassociated 18ct gold snake-link chain, *pendant length approximately 35mm.*

£800–£1,200



215

A BLACK OPAL AND DIAMOND RING, the opal cabochon claw-set within a surround of brilliant-cut diamonds, between similarly-set shoulders, stamped '750', *total diamond weight approximately 0.30 carat, ring size K–L.*

£600–£800

216

A LATE 19TH CENTURY OPAL THREE STONE RING, the graduated opal cabochons with diamond highlights between, to a scrollwork gallery, mounted in gold, *ring size L.*

£1,200–£1,500



217

A LATE 19TH CENTURY OPAL AND DIAMOND BANGLE, the hinged bangle set to the front with a graduated row of opal cabochons with old brilliant-cut diamond highlights, with engraved foliate decoration and ropetwist detailing to the gallery, mounted in gold, *total diamond weight approximately 0.65 carat, inner dimensions 5 x 6cm.*

£2,000–£3,000





218

A LATE 19TH CENTURY GEM-SET DUCAL CORONET BROOCH, set throughout with rose-cut diamonds and accented with vari-cut rubies, sapphires and emeralds, mounted in silver and gold, width 52mm. £600–£800

The coronet of a duke or duchess comprises a circlet supporting eight strawberry leaves, of which five are seen in two-dimensional representations.



219

AN ANTIQUE DIAMOND STAR BROOCH, set throughout with transitional and single-cut diamonds, total diamond weight approximately 2.90 carats, length 45mm. £500–£700



220

A DIAMOND CRESCENT BROOCH, CIRCA 1890, set with a continuous row of graduated old brilliant-cut diamonds, mounted in silver and gold, total diamond weight approximately 1.50 carats, length 25mm. £400–£600



221

A DIAMOND ARROW BROOCH, CIRCA 1890, the polished knifewire set with an old brilliant-cut diamond, with rose-cut diamond detailing, mounted in silver and gold, (one diamond deficient), principal diamond weight approximately 0.75 carat, length 6cm. £300–£500



222

A 19TH CENTURY SAPPHIRE AND DIAMOND BROOCH, the trefoil sprig set with an oval mixed-cut sapphire and rose-cut diamonds, mounted and gold, length 45mm. £500–£700



223

A PEARL AND DIAMOND BROOCH/PENDANT, CIRCA 1890, the pierced lozenge-shaped brooch with scroll and flowerhead detailing, set throughout with old brilliant-cut diamonds and with a pearl highlight to the centre, mounted in silver and gold, the similarly-set bale detachable, (pearl untested), fitted case, total diamond weight approximately 2.20 carats, length 40mm. **£600–£800**

224

A DIAMOND BROOCH / PENDANT, CIRCA 1890, of openwork flowerhead design, set throughout with cushion, old brilliant and rose-cut diamonds, mounted in silver and gold, total diamond weight approximately 3.25 carats, length including bale 44mm. **£2,000–£3,000**



225

A DIAMOND BOW BROOCH, CIRCA 1890, the realistically modelled bow with pierced detailing and set throughout with old brilliant and cushion-shaped diamonds, mounted in silver and gold, associated antique case, total diamond weight approximately 7.00 carats, length 6.5cm. **£2,000–£3,000**





226

A DIAMOND PENDANT, the bicolour circular drop set with a cluster of brilliant-cut diamonds, within a ropetwist and polished surround, suspended by a cable-link chain, stamped '750', total diamond weight approximately 1.00 carat, pendant length 30mm.

£600–£800

227

AN ENAMEL AND DIAMOND PENDANT, designed as a knifewire set with two brilliant-cut diamonds, each within a black enamel surround, leading to a similarly-set drop with foliate detailing, total diamond weight approximately 0.80 carat, length 5.5cm.

£400–£600



228

A DIAMOND CLUSTER RING, set with a brilliant-cut diamond flowerhead in a raised illusion setting, Portuguese assay mark, total diamond weight approximately 0.60 carat, ring size N–O. £200–£300



229

A DIAMOND HALF ETERNITY RING, the tapered band set to the front with a graduated row of brilliant-cut diamonds, mounted in 18ct gold, UK hallmark, total diamond weight approximately 0.80 carat, ring size K½. £400–£600



230

A SAPPHIRE AND DIAMOND BANGLE, set to the front with oval-cut sapphires spaced by pairs of brilliant-cut diamonds, inner diameter 6.0cm. £100–£150



231

TWO DIAMOND PENDANTS, the first with fanned surmount and bow motif suspending a matching drop, set throughout with calibr -cut sapphires and vari-cut diamonds, (later adapted), together with an openwork heart-shaped pendant set with single-cut diamonds, stamped '750', both with unassociated curb-link chains, first pendant length 42mm. £400-£600

232

A PAIR OF SAPPHIRE AND DIAMOND EAR PENDANTS, the brilliant-cut diamond surmounts suspending flared openwork panels, similarly-set and terminating in oval-cut sapphire drops, length including 35mm. £100-£120



233

A PAIR OF DIAMOND EAR STUDS, each set with a brilliant-cut diamond in a four-claw setting, total diamond weight approximately 0.90 carat. £400-£600



234

A PAIR OF PLATINUM AND DIAMOND EAR PENDANTS BY TIFFANY & CO., the heart-shaped drops set with brilliant-cut diamonds, stamped ' T&Co.', London hallmark for 2009, total diamond weight approximately 0.50 carat, length 20mm. £400-£600



235

AN EARLY 20TH CENTURY DIAMOND BANGLE AND BAR BROOCH SUITE, set to the front with a row of graduated old brilliant-cut diamonds, with rose-cut diamond highlights between, the tapered bar brooch en suite, mounted in platinum and gold, bangle inner diameter 5.9cm, brooch length 6.5cm. £700-£900





236

A DIAMOND SINGLE STONE PENDANT, the brilliant-cut diamond in a bicolour mount, stamped 'k750', diamond weight approximately 0.50 carat, length 16mm. £300-£400



237

A TRICOLOUR MULTI-BAND RING, the four individual polished hoops joined by a sliding brilliant-cut diamond set buckle, the two outer bands engraved with letters of the Latin script alphabet and numerals respectively, stamped '18K', ring size L-L½. £600-£800



238

AN 18CT GOLD TRIPLE HEART RING BY DAVID MORRIS, the polished hearts of tricolour design, maker's mark 'DM', stamped '750', Birmingham import marks for 1994, ring size M. £260-£300



239

AN 18CT GOLD AND DIAMOND DRESS RING, of stylised knot design, channel-set to the front with baguette-cut diamonds, London hallmark for 1993, total diamond weight approximately 2.00 carats, ring size L½. £600-£800

240

A 9CT GOLD BRACELET, 1984, of curb-link design, UK hallmark, length 23cm. £400-£600

241

A 9CT GOLD CHAIN, of curb-link design, UK hallmark, length 62cm. £500-£700



242

AN 18CT GOLD EMERALD AND DIAMOND NECKLACE, BRACELET, RING AND EARRING SUITE, 1988, the necklace composed of curved polished links spaced by circular-cut emerald and brilliant-cut diamonds, the bracelet en suite, the ring and earrings of conforming design, London hallmark, maker's mark 'FJ' total diamond weight approximately 3.20 carats, ring size M. £3,000–£3,600



243

AN EMERALD AND DIAMOND PENDANT ON CHAIN, the step-cut emerald beneath a marquise and brilliant-cut diamond surmount, the whole suspended by a fine cable-link chain, *total diamond weight approximately 0.50 carat, pendant length 17mm.* £600–£800



244

A PAIR OF DIAMOND EAR CLIPS, of scrolling foliate design, with vari-cut diamond accents, *length 18mm.* £300–£500



245

A DIAMOND ETERNITY RING, set throughout with brilliant-cut diamonds, mounted in platinum, stamped 'PT950', *total diamond weight approximately 3.15 carats, ring size K.* £800–£1,200



246

A SAPPHIRE AND DIAMOND CLUSTER RING, the oval mixed-cut sapphire claw set within a surround of brilliant-cut diamonds, within wirework setting, stamped '750', *total diamond weight approximately 1.60 carats, ring size M.* £1,500–£2,000



247

A MID 20TH CENTURY EMERALD AND DIAMOND DRESS RING, the step-cut emerald within a bombé surround of vari-cut diamonds, between similarly-set shoulders, the gallery and shank with wirework and ropetwist decoration, *total diamond weight approximately 2.80 carats, ring size L.* £800–£1,200



248

A DIAMOND SINGLE STONE RING, the princess-cut diamond, weighing 1.63 carats, claw-set to a tapered band, mounted in platinum, London hallmark, ring size approximately K-L. £4,000–£6,000

Accompanied by a verbal report from GCS. Please contact department for details.

249

AN ART DECO DIAMOND LINE BRACELET BY CHAUMET, CIRCA 1925, set with a continuous row of old brilliant-cut diamonds, the settings with engraved geometric decoration, mounted in platinum, partial maker's mark, French import mark, total diamond weight approximately 6.90 carats, length 18.5cm. £3,000–£5,000





250

A **SAPPHIRE AND DIAMOND BROOCH**, the stylised spray set throughout with vari-cut diamonds and circular-cut sapphires, stamped '750', total diamond weight approximately 3.00 carats, length approximately 5cm.

£1,000–£1,500



251

A **DIAMOND BROOCH**, set with a stepped cluster of brilliant-cut diamonds with a staggered surround of baguette-cut diamonds to one side, stamped '750', indistinct maker's mark, total diamond weight approximately 3.00 carats, length 35mm.

£800–£1,200



252

A **DIAMOND DRESS RING, CIRCA 1970**, the openwork cluster set with brilliant and baguette-cut diamonds, to a reeded hoop, total diamond weight approximately 1.10 carats, ring size I–J.

£600–£800



253

A **DIAMOND DRESS RING**, the broad band pavé-set to the front with brilliant-cut diamonds, between raised zig-zag borders of similarly-cut diamonds in navette-shaped mounts, stamped '750', total diamond weight approximately 1.65 carats, ring size Q.

£2,000–£3,000



254

A PAIR OF DIAMOND EAR PENDANTS, each set with a rose-cut diamond in a closed back setting, within a surround of brilliant-cut diamonds and suspended beneath a scrolled drop surmount of brilliant and single-cut diamonds, *total diamond weight very approximately 4.00–4.50 carats, length 4.5cm.* £2,600–£3,000

255

A PAIR OF 18CT WHITE GOLD AND DIAMOND EAR PENDANTS, the stud surmounts suspending an articulated row of brilliant-cut diamond collets, UK hallmark, *total diamond weight approximately 0.70 carat, length 35mm.* £300–£400



256

AN AQUAMARINE AND DIAMOND RING, the cut-cornered aquamarine in a rubover setting within a surround of brilliant-cut diamonds, to a broad band, maker's mark for Olga, stamped '18ct', maker's pouch, *ring size M–N.* £1,500–£2,000

257

AN AMETHYST AND DIAMOND CLUSTER RING, the cushion-shaped amethyst within a surround of brilliant-cut diamonds, mounted in 18ct gold, UK hallmark, *total diamond weight approximately 0.85 carat, ring size M.* £400–£600



258

AN AQUAMARINE AND DIAMOND DRESS RING, the fancy-cut aquamarine claw set within a pierced brilliant-cut diamond surround, mounted in 18ct gold, Birmingham assay mark, *total diamond weight approximately 0.80 carat, ring size N.* £1,200–£1,500





259

A PAIR OF DIAMOND EAR STUDS, each brilliant-cut diamond in a four-claw setting, *total diamond weight approximately 2.70 carats.* £2,000–£3,000



260

A DIAMOND CLUSTER RING, set with a cut-cornered radiant-cut diamond of yellow tint, *weighing 1.01 carats*, within a two-row surround set throughout with brilliant-cut diamonds, the tapered shoulders and gallery similarly-set, stamped '18K', maker's mark 'EMJ', *total brilliant-cut diamond weight approximately 1.50 carats, ring size N.* £1,000–£1,500

Accompanied by a verbal report from GCS. Please contact department for details.



261

A 'VANNERIE' BRACELET BY TIFFANY & CO., 1995, of basket weave design, signed 'Tiffany & Co.', stamped '750', *maker's case, length 18.5cm.* £3,000–£4,000



262

AN EMERALD AND DIAMOND NECKLACE AND EARRING SUITE BY BOUCHERON, the articulated collar of reeded polished links spaced to the front by circular-cut emeralds and brilliant-cut diamonds, the earrings en suite, mounted in 18ct gold, signed 'BOUCHERON', numbered, French assay marks, maker's case, total diamond weight approximately 2.15 carats, necklace length 41cm. £3,000-£4,000



263

A BLACK DIAMOND PENDANT, modelled as a clenched fist, pavé-set throughout with brilliant-cut treated black diamonds, suspended by a ropetwist chain, pendant stamped '750', chain stamped '14k', total diamond weight approximately 3.90 carats, length 5.2cm. £800–£1,200



264

A SAPPHIRE AND DIAMOND RING, FRENCH, the bicoloured band of tapered design, set to the front with an oval-cut sapphire and brilliant-cut diamonds to either side, French assay mark, maker's mark, total diamond weight approximately 0.60 carat, ring size approximately L. £300–£400



265

A GEM-SET RING, the oval-cut gemstone between looped shoulders set with brilliant-cut diamonds, mounted in 18ct gold, UK hallmark, ring size L–M. £150–£200



266

A SAPPHIRE AND DIAMOND RING, the oval mixed-cut sapphire claw-set between brilliant-cut diamond trios and similarly-set crossover shoulders, Portuguese assay marks, total diamond weight approximately 0.60 carat, ring size P. £300–£500



267

A DIAMOND BUCKLE BANGLE, the buckle frame and holes set with brilliant-cut diamonds, stamped '18CT', total diamond weight approximately 1.55 carats, inner dimensions 5.5 x 4.5cm. £1,500–£2,000



268

A FANCY-LINK NECKLACE AND BRACELET SUITE, the links with alternating plain polish and satin finish, leading to a bicoloured interlocking frontispiece, the bracelet en suite, Portuguese assay marks, necklace length 41cm, bracelet length 18cm. (2) £600–£800

Partially illustrated

269

A DIAMOND SINGLE STONE RING, set with a brilliant-cut diamond on a plain polished hoop, Portuguese assay mark, diamond weight approximately 0.50 carat, ring size N–O.

£300–£500



270

AN 18CT GOLD HEART AND STAR BRACELET BY DAVID MORRIS, the belcher-link bracelet chain spaced by polished heart and star motifs with reeded white gold connections, maker's mark 'DM', stamped '750', Birmingham import marks for 1993, length 19cm.

£700–£800





271

A PAIR OF LAPIS LAZULI CUFFLINKS, the square-shaped lapis lazuli panels with applied pierced circular decoration, to T-bar terminals, stamped '14k' and '585', panel length 24mm. £400–£600



272

AN 18CT GOLD AND DIAMOND BROOCH BY KUTCHINSKY, 1971, of openwork abstract design, the overlapping textured batons set with trios of brilliant-cut diamonds, signed 'Kutchinsky', London hallmark, maker's case, total diamond weight approximately 0.85 carat, length 6cm. £1,500–£2,000



273

A DIAMOND CLUSTER RING, the cut-cornered Fancy Yellow diamond, weighing 1.57 carats, claw-set within a surround of brilliant-cut diamonds and between similarly-set shoulders, mounted in 18ct gold, London hallmark, ring size K½. **£3,000–£5,000**

Accompanied by a copy of a GIA report stating that the diamond weighing 1.57 carats is natural Fancy Yellow colour, VVS2 clarity. Report number 1172369607, dated 4 November 2015.



274

A COLOURED DIAMOND ETERNITY RING BY GRAFF, set with a continuous row of princess-cut diamonds of yellow tint, (diamonds untested for natural colour), signed 'Graff', total diamond weight approximately 3.00 carats, ring size L. **£2,000–£3,000**



275

A CULTURED PEARL AND DIAMOND PENDANT ON CHAIN, the oval-shaped cultured pearl drop beneath a brilliant-cut diamond surmount, the whole suspended by a cable-link chain, *pendant length 12mm.* £200–£300



276

A CULTURED PEARL BROOCH BY MIKIMOTO, the stylised spray set with cultured pearls, the leaves with textured finish, maker's mark, stamped 'K14', *length 7.5cm.* £200–£300



277

A ROSE QUARTZ AND DIAMOND DRESS RING, the frosted rose quartz cabochon set beneath two overlapping brilliant-cut diamond bands, stamped '750', indistinct maker's mark, *ring size J½.* £400–£600



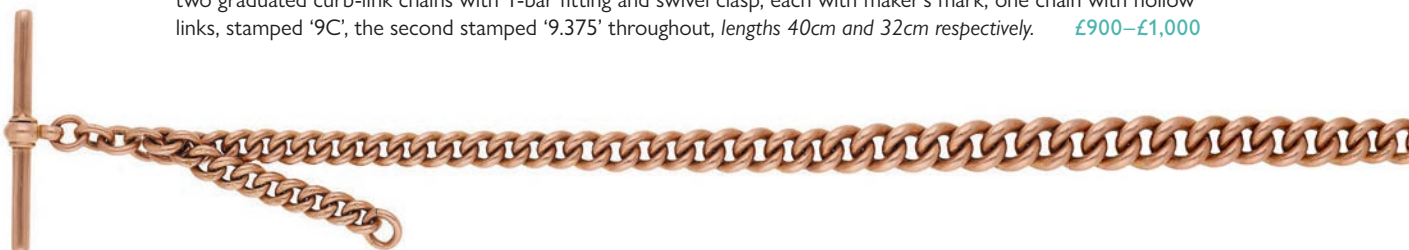
278

AN 18CT GOLD GEM-SET TORQUE RING, with cultured pearl and pierced diamond set boule terminal, Birmingham assay mark, *ring size M.* £300–£400



279

A PAIR OF EARLY 20TH CENTURY 9CT GOLD ALBERT CHAINS BY CONSTANTINE & FLOYD LTD, the two graduated curb-link chains with T-bar fitting and swivel clasp, each with maker's mark, one chain with hollow links, stamped '9C', the second stamped '9.375' throughout, *lengths 40cm and 32cm respectively.* £900–£1,000





280

A CULTURED PEARL AND DIAMOND RING AND EARRING SUITE, of flowerhead design, set with a cultured pearl within a pierced petal surround set throughout with single-cut diamonds, the earrings en suite, *total diamond weight approximately 1.60 carats, ring size K½.* **£1,000–£1,500**

281

A PAIR OF CULTURED PEARL AND DIAMOND EAR CLIPS, each set with a cultured pearl above a brilliant-cut diamond cluster, stamped '750', *total diamond weight approximately 1.30 carats, length 20mm.* **£600–£800**



282 Y

A PAIR OF CULTURED MABÉ PEARL EAR CLIPS, the cultured mabé pearls within polished lobed surrounds, stamped '750', *diameter 23.5mm.* **£300–£400**

283

A CULTURED PEARL NECKLACE, the graduated strand of cultured pearls terminating in an emerald cabochon and transitional-cut diamond clasp, *total diamond weight approximately 0.30 carat, length 56.6cm.* **£200–£300**





284

AN EARLY 19TH CENTURY DIAMOND BROOCH, set with an oval-cut diamond within a pierced lozenge-shaped surround with scroll and foliate detailing, set throughout with old brilliant and rose-cut diamonds, suspending a detachable drop designed en suite, mounted in silver and gold, closed back settings throughout, *total diamond weight very approximately 5.50 carats, length 5.4cm.* £4,000–£6,000



285

A DIAMOND CLUSTER SET RING, the 19th century cluster set with an old brilliant-cut diamond within a surround of rose-cut diamonds, in pinched collet settings, mounted in silver and gold, to a later shank, *principal diamond approximately 0.60 carat, ring size U.* £900–£1,200



286

AN EARLY 19TH CENTURY BLOODSTONE INTAGLIO AND DIAMOND RING, the oval bloodstone carved to depict the profile of a classical male, within a surround of rose-cut diamonds in closed-back settings, mounted in gold, *intaglio 16.7 x 12.9mm, ring size M–N.* £500–£700



287

A MID 19TH CENTURY EMERALD BROOCH, set with a cut-cornered mixed-cut emerald, weighing 8.44 carats, in a foiled closed-back setting, with four similarly-set circular-cut emeralds to the cardinal points, within a pierced scrollwork mount with foliate and fleur-de-lys detailing, mounted in gold, width 45mm. £3,000–£5,000

Provenance: The brooch was gifted circa 1851 to Colonel John Smith Young upon his retirement from the *Army of His Highness The Nizam*, and presented by the Nizam himself. Thence by direct family descent.

According to a verbal report by GCS, the principal emerald is of Colombian origin, with indications of minor to moderate clarity enhancement. Verbal report number 5784-2406.



288

A LATE 19TH CENTURY DIAMOND RING, the lozenge-shaped cluster set throughout with old brilliant-cut diamonds, to scrollwork shoulders, mounted in gold, stamped '18', cased, total diamond weight approximately 0.95 carat, ring size O. £400–£600

289

AN EMERALD AND DIAMOND RING, the oval-cut emerald with a trilliant-cut diamond to either side, total diamond weight approximately 0.60 carat, ring size L.

£1,000–£1,500



290

A HEART-SHAPED DIAMOND CLUSTER RING, set with brilliant-cut diamonds, stamped '18ct', total diamond weight approximately 0.35 carat, ring size K½. £150–£200





291

AN ART DECO EMERALD AND DIAMOND PENDANT, designed as a square-shaped lattice set throughout with old brilliant-cut diamonds with vari-cut emeralds between, beneath a similarly-set surmount and to a fine cable-link chain, mounted in platinum, fitted case by Garrard & Co. Ltd, *total diamond weight approximately 1.50 carats, pendant length 35mm.* £3,000–£4,000



292

AN EMERALD AND DIAMOND RING, the octagonal-cut emerald between two old-cut diamonds, within scrollwork gallery setting, *total diamond weight approximately 1.00 carat, ring size L½.* £1,200–£1,500



293

AN EARLY 20TH CENTURY SAPPHIRE AND DIAMOND PANEL RING, the cushion-shaped panel of lattice design, set throughout with old brilliant-cut diamonds and calibr -cut sapphires, mounted in platinum and gold, the later band indistinctly stamped '18K', *total diamond weight approximately 1.15 carats, ring size L½.* £700–£900

294

AN EMERALD AND DIAMOND NECKLACE AND EARRINGS BY H. STERN, the necklace converted from a bracelet and set to the front with a series of circular-cut emerald and brilliant-cut diamond clusters, with similarly-cut diamonds between, to later cable-link chain, the clasp en suite, the earrings of similar design and with foliate surmounts, both with maker's mark and stamped '750', necklace with French import marks, *total diamond weight approximately 2.80 carats, necklace length 36.5cm, earring length 30mm.*

£2,000–£3,000

295

A PAIR OF DIAMOND EAR STUDS, each set with an old brilliant-cut diamond, *total diamond weight approximately 1.90 carats, length 7mm.*

£1,000–£1,500

296

AN EARLY 20TH CENTURY EMERALD AND DIAMOND PANEL RING, the old brilliant-cut diamonds spaced by two step-cut emeralds, millegrain set within a scalloped surround, mounted in platinum, *total diamond weight approximately 0.45 carat, ring size R.*

£600–£800

297

AN ART DECO DIAMOND RING, designed as a coiled serpent, the head set with an old oval-shaped diamond, the body set with alternating square-cut emeralds and old brilliant-cut diamonds, mounted in platinum, stamped 'PLAT', *total diamond weight approximately 0.25 carat, ring size O.*

£100–£150



298

A DIAMOND SINGLE STONE RING, claw-set with a brilliant-cut diamond, stamped '18CT', diamond weight approximately 1.15 carats, ring size M. £1,500–£1,800



299

A BURMESE PINK SAPPHIRE AND DIAMOND CLUSTER RING, 1933, the cushion-shaped pink sapphire claw-set within a surround of old brilliant-cut diamonds, mounted in 18ct gold, Chester hallmark, total diamond weight approximately 0.65 carat, ring size M. £2,000–£3,000

Accompanied by a report from GCS stating that the cushion-cut pink sapphire is of Burmese origin, with no indications of heating. Report number 5784-2995 dated 22 July 2024.



300

A DIAMOND SINGLE STONE RING, claw-set with a brilliant-cut diamond weighing 1.54 carats, stamped '18CT', ring size M. £4,000–£6,000

Accompanied by a report from GCS stating the diamond is G colour and VS1 clarity. Report number 5784-3160, dated 6 August 2024.



301

AN EARLY 20TH CENTURY DIAMOND SINGLE STONE RING, set with an old brilliant-cut diamond, weighing 4.79 carats, within a gallery of crossover claws and between diamond-set shoulders, mounted in platinum, ring size N. £10,000–£12,000



302

A PAIR OF CITRINE AND DIAMOND EAR PENDANTS, each mixed-cut citrine and diamond cluster surmount suspending a similarly-set drop, stamped 'Au750', total diamond weight approximately 1.00 carat, length 35mm. **£600-£800**



303

A PAIR OF DIAMOND EARRINGS, of foliate spray design, the brilliant-cut diamond-set leaves with polished midribs and tied by a baguette-cut diamond ribbon, total diamond weight approximately 4.20 carats, length 35mm. **£2,000-£2,600**

304

AN 18CT GOLD NECKLACE, of curb-link design, UK import mark, length 40.5cm. **£2,000-£3,000**



305

AN ENAMEL AND DIAMOND PANTHER BROOCH, CIRCA 1960, FRENCH, the realistically modelled cub with black enamel and brilliant-cut diamond spots, with beaded detailing and circular-cut emerald eyes, French assay marks, instinct maker's mark, *total diamond weight approximately 4.75 carats, length 7.5cm.* £3,000–£5,000



306 Y

A DIAMOND AND MOTHER-OF-PEARL BROOCH BY CHAUMET, realistically modelled as a bee, the wings with applied mother-of-pearl panels beneath ropetwist veins, the textured abdomen set with brilliant-cut diamonds, the eyes similarly-set, signed 'Chaumet Paris', numbered '121766', maker's mark, French assay mark, *total diamond weight approximately 0.60 carat, length 38mm.* £1,200–£1,500



307

AN ENAMEL AND DIAMOND PANTHER BROOCH, the realistically modelled panther cub with black enamel spots and brilliant-cut diamond detailing, with circular-cut ruby eyes, assay mark, *total diamond weight approximately 0.35 carat, length 8.0cm.* £1,800–£2,200



308

AN ART DECO DIAMOND PANEL BROOCH, the openwork brooch set throughout with old brilliant-cut diamonds, mounted in platinum, *total diamond weight approximately 2.80 carats, width 45mm.* £800–£1,000

309

A DIAMOND BRACELET, the openwork strap designed as a series of flowerhead clusters between scalloped borders, set throughout with brilliant-cut diamonds and with similarly-cut diamonds between, mounted in 18ct gold, (one diamond deficient), London hallmark for 2004, sponsor's mark for London Assay Office, *total diamond weight approximately 16.40 carats, length 18.5cm.* £4,000–£6,000





310

A DIAMOND NECKLACE AND BRACELET SUITE, of two-row knifewire design, set at intervals throughout with brilliant-cut diamonds, the bracelet en suite, mounted in 18ct gold, UK hallmark, total diamond weight approximately 12.00 carats, necklace length 44cm, bracelet length 17.5cm. £4,000-£6,000



311

A DIAMOND RING, the brilliant-cut diamond, *weighing 6.02 carats*, between baguette-cut diamonds shoulders, *ring size N*. £20,000–£30,000

Accompanied by a report from GCS stating that the brilliant-cut diamond is L colour, SI1 clarity. Please contact department for further details.



312

A DIAMOND COLLAR, designed as a continuous series of interlocking fan-shaped links, set throughout with tapered baguette-cut diamonds, stamped 'PT900', total diamond weight approximately 31.00 carats, length 44cm. £7,000—£9,000



313

A 9CT GOLD DIAMOND BROOCH / PENDANT, CIRCA 1971, the brilliant-cut diamond cluster within a wirework surround of stylised foliate design, UK import mark, sponsor's mark 'ELd', total diamond weight approximately 0.35 carat, length including bale 45mm.

£200–£300



314

A DIAMOND BROOCH, CIRCA 1950, the stylised spray with polished fronds and woven ropetwist detailing, set with single-cut diamond highlights, stamped '750', indistinct assay mark, total diamond weight approximately 0.50 carat, length 45mm.

£600–£800

315

A MID 20TH CENTURY GEM-SET SET BROOCH, the spiral of polished batons issuing two wirework hoops below, set to one side with a trio of diamond and sapphire, ruby or emerald flowerhead clusters, stamped '750', indistinct maker's mark, length 35mm.

£500–£800



316

A 9CT GOLD BRACELET BY CHIAMPESAN, of curb-link design, signed, UK import mark, length 22cm.

£300–£400



317

AN 18CT GOLD CHAIN BY CHIAMPESAN, of curb-link design, signed, UK import mark for 1985, length 53cm.

£1,000–£1,500





318

AN EMERALD NECKLACE, BRACELET AND EAR CLIP SUITE BY PÉRY & FILS, FRENCH, CIRCA 1960, the necklace designed as a series of interlocking ropetwist knots, the front suspending a fringe of emerald cabochons, the ear clips set with similarly-cut emerald cabochons and the bracelet with circular-cut emeralds, all with French assay marks, the bracelet and necklace with maker's mark for Péry & Fils, unsigned, necklace length 40cm, bracelet length 17.5cm, ear clip length 23mm. £10,000–£15,000

Péry et Fils was founded in 1875 when Monsieur Lucien Péry decided to expand and diversify his glove making firm. Early in the 20th century he was joined by his son Albert and together they would go on to forge partnerships with the most prestigious jewellery houses in Paris at the time.

Amongst others, they created jewels for Boucheron, Chaumet, Mauboussin, Templier, Tiffany and later Dior and Graff. Perhaps most famous of all though was their relationship with Van Cleef & Arpels that started in 1925 and strengthened throughout the century. Some of their most significant creations for Van Cleef & Arpels included the 'Passe-Partout' collection and the iconic 'Zip' necklaces and 'Ludo' bracelets.

Although unsigned, this suite is similar to pieces sold by Van Cleef & Arpels during the second half of the 20th century.



319

A PAIR OF DIAMOND CLUSTER EARRINGS, with a central flowerhead motif, set throughout with old and brilliant-cut diamonds, total diamond weight approximately 2.90 carats, diameter 20mm. £700–£900



320

A DIAMOND TWO STONE RING, of crossover design, each side set with a brilliant-cut diamond, stamped '18CT', total diamond weight approximately 2.60 carats, ring size R–S. £2,000–£3,000



321

A DIAMOND LINE BRACELET, CIRCA 1950, set with a graduated row of brilliant-cut diamonds, stamped 'PL', cased, total diamond weight approximately 6.20 carats, length 19cm. £3,000–£5,000



322

AN EARLY 20TH CENTURY DIAMOND PENDANT, the old brilliant-cut diamond suspending a knife-wire drop terminating in an old cushion-cut diamond, weighing 4.12 carats, the whole suspended by a cable-link chain, remaining diamond weight approximately 0.40 carat, pendant length 31mm.

£6,000–£8,000



323

A DIAMOND THREE STONE RING, set with a row of brilliant-cut diamonds, between tapered shoulders, indistinct stamp, total diamond weight approximately 2.40 carats, ring size P.

£2,600–£3,000



324

AN ART DECO SAPPHIRE AND DIAMOND BAR BROOCH, the square-cut sapphire diagonally set between a graduated row of old brilliant-cut diamonds, with a trio of similarly-cut stones to each terminal, mounted in platinum and gold, *total diamond weight approximately 2.50 carats, length 8cm.* £1,200–£1,500



325

A DIAMOND HOOP BROOCH, CIRCA 1920, the oval hoop with four principal brilliant-cut diamonds to the cardinal points, the surround set throughout with similarly and single-cut diamonds, *total diamond weight approximately 2.60 carats, width 41mm.*

£1,200–£1,500



326

A SAPPHIRE AND DIAMOND BRACELET, of tapered design, set throughout with old brilliant, transitional and single-cut diamonds, with calibré-cut sapphire highlights, the gallery with engraved decoration, cased, *total diamond weight approximately 9.20 carats, length 17.5cm.*

£6,000–£8,000

327

A DIAMOND RING, set with a step-cut diamond, weighing 3.27 carats, with a half moon-shaped diamond to either side, mounted in platinum, UK hallmark, remaining total diamond weight approximately 1.00 carat, ring size M. **£8,000–£12,000**

Accompanied by a report from GCS. Please contact department for details.





328

A PAIR OF SAPPHIRE, SEED PEARL AND DIAMOND EARRINGS, of openwork geometric design, set with brilliant-cut diamonds, French-cut sapphire highlights and a seed pearl to the centre of each drop, stamped '750', total diamond weight approximately 1.00 carat, length 30mm.

£300-£500



329

A PAIR OF DIAMOND CLUSTER EAR STUDS, the square-shaped clusters set throughout with brilliant-cut diamonds, total diamond weight approximately 2.00 carats, length 10mm. £600-£800



330

A GEM-SET SPRAY BROOCH, the flowerheads each set with a moonstone cabochon within a surround of circular-cut sapphires and single-cut diamonds, with similarly-cut diamond leaves and ribbon, mounted in 9ct gold, London hallmark, maker's mark 'MAW', total diamond weight approximately 1.50 carats, length 5.5cm.

£500-£800



331

A DIAMOND THREE STONE RING, set with a step-cut diamond with a princess-cut diamond to either side, mounted in platinum, UK hallmark, principal diamond weight approximately 1.75 carats, remaining total diamond weight approximately 2.05 carats, ring size L-M. **£4,000–£6,000**



332

AN ART DECO SRI LANKAN SAPPHIRE AND DIAMOND RING, the cushion-shaped sapphire, weighing 7.87 carats, with two transitional-cut diamonds to either side, mounted in platinum, ring size O. **£3,000–£5,000**

Accompanied by a report from GCS stating that the sapphire is of Sri Lankan origin with no indications of heating. Report number 5784-2857, dated 12 July 2024.



333

A PINK SAPPHIRE AND DIAMOND CLUSTER RING, the oval-cut pink sapphire within a two-row surround of brilliant-cut diamonds, mounted in platinum, UK hallmark, *total diamond weight approximately 0.90 carat, ring size L-M.* **£700–£900**



334

A DIAMOND THREE STONE RING, set with a marquise-cut diamond with a pear-cut diamond to either side, stamped '750', *principal diamond weight approximately 1.40 carats, remaining total diamond weight approximately 1.00 carat, ring size L.* **£2,000–£3,000**



335

A DIAMOND PENDANT, set with a marquise-cut diamond, weighing 3.30 carats, beneath two similarly-cut diamonds, to a platinum cable-link chain, UK hallmark, remaining total diamond weight approximately 0.40 carat, chain length at longest 52cm. **£30,000–£50,000**

Accompanied by a report from GIA stating that the diamond weighing 3.30 carats is D colour, VVS2 clarity. Report number 2131798774, dated 9 January 2012.

Accompanied by a GIA type classification letter stating that the diamond is Type IIa, dated 9 January 2012.



336

A COLLECTION OF EARLY 20TH CENTURY GEM-SET PENDANTS, of similar design and form, with vari gem-set, enamel and seed pearl decoration, two pendants suspended by chains and one pendant with additional brooch fitting, mounted in silver and gold, *various lengths*. (Quantity) £400–£600

337

A COLLECTION OF JEWELLERY, to include six assorted silver Albert chains, a 19th century jet necklace, two hardstone inset fob seals, a Victorian silver hinged bangle of buckle design, a white metal belt with mask decoration, an early 20th century lady's wristwatch, stamped '19k', two silver cased fob watches and further miscellaneous items, *various lengths*. (Quantity) £300–£400

338

A SMALL COLLECTION OF JADE JEWELLERY, comprising a ring set with an oval jadeite cabochon of lavender tint, with a trio of brilliant-cut diamonds to either side, together with a pendant en suite, and a pair of nephrite jade drop earrings, circa 1900, mounted in gold, ring and pendant stamped '750', jade untested for treatments, *total diamond weight approximately 0.40 carat, ring size O, pendant length 28mm, earring length 48mm*. £500–£700

339

A COLLECTION OF JEWELLERY, comprising a George III gold spade guinea, 1787, in a pendant setting, a 1/10 krugerrand, 1981, mounted to a gate-link bracelet, a zodiac 'Cancer' pendant, and a 9ct gold Rotary wristwatch with expanding bracelet strap, *various lengths*. £600–£800

340

A COLLECTION OF CULTURED PEARL JEWELLERY, the cultured pearls of mostly black tint, comprising a necklace, five pendants, two pairs of ear studs, and fifteen loose cultured pearls, drilled and undrilled, *various lengths*. (Quantity) **£200–£300**

341

AN 18CT GOLD DIAMOND THREE STONE RING AND A 9CT GOLD BAND RING, the first set with brilliant-cut diamonds, the second of D-shaped profile with engraved decoration, *total diamond weight approximately 0.35 carat, ring sizes Q and U*. **£300–£400**

342

A SMALL COLLECTION OF JEWELLERY, to include a Royal Thames Yacht Club burgee pendant, later adapted and set with calibr -cut sapphires and rose-cut diamonds, suspended by an unassociated multi-link chain with seed pearl spacers, together with three diamond set rings and a 9ct gold garnet ring, *ring sizes L–Q*. (5) **£400–£600**

343

A SMALL COLLECTION OF JEWELLERY AND OTHER ITEMS, comprising a 9ct gold cigar piercer by Sampson Mordan & Co., a variety of gem-set brooches, including a shell cameo within a marcasite frame, probably depicting the profile of King George V, a crescent and serpent brooch, a white enamel cross badge of the Sigma Chi fraternity, a silver and blue paste circlet brooch, together with two late 19th century gold and gem-set rings, a zircon single stone ring, two garnet set pendants (one broken) and a set of reverse painted 'Guinness' themed buttons, *various lengths*. (Quantity) **£400–£600**





344

A SMALL COLLECTION OF JEWELLERY, to include a pair of 9ct gold cufflinks by Deakin & Francis, a 9ct gold money clip, a pair of silver pig cufflinks, etc., *various lengths*. (Quantity)

£150–£200

345

A COLLECTION OF ANTIQUE JEWELLERY, comprising a diamond and enamel 'RFC' brooch, a sapphire and diamond circlet brooch, a garnet and seed pearl circlet brooch, a sapphire and diamond bar brooch, an amethyst bar brooch, and a pendant with glazed compartment to the front, all mounted in gold, *various lengths*. (6)

£400–£600

346

A COLLECTION OF ANTIQUE ENAMEL BROOCHES, to include three Arts and Crafts examples by Charles Horner, signed, together with an additional eight antique brooches, mounted in silver, gold and base metal, *various lengths*. (Quantity).

£150–£200

347

A COLLECTION OF RINGS, comprising an 18ct gold sapphire and diamond five stone two three stone diamond rings, shanks stamped '18ct', a half pearl and garnet flowerhead brooch (lacking one half pearl), two small plain gold bands and a silver marcasite and cultured pearl ring. (7)

£200–£300

348

A SMALL COLLECTION OF ANTIQUE AND LATER JEWELLERY, to include three 19th century gold and gem-set cluster rings, two early 20th century three stone diamond crossover rings, and a hardstone cameo set within a pierced scrollwork mount with seed pearl highlights, various ring sizes, brooch length 2.5cm. (6) £400–£600

349

A SHELL CAMEO BROOCH, carved to depict The Birth of Venus after Botticelli, in a 9ct gold mount, together with a shell cameo clasp, the gilt mount of cannetille design, to a meshwork bracelet, and a 9ct gold hinged bangle, of entwined knot design, first length 53mm. (3) £200–£300

350

THREE GEM-SET RINGS, comprising a triangular ruby-set ring, an aquamarine and diamond cluster ring, both with applied ropetwist decoration, together with a diamond-set watch ring with pierced hinged cover, ring sizes K–N. £500–£600

351

A COLLECTION OF ANTIQUE BAR BROOCHES, comprising a chrysoberyl cat's eye and diamond brooch, a diamond and pearl lozenge-shaped brooch, a seed pearl horseshoe brooch, a hardstone axe brooch and three further examples, various lengths. (7) £300–£500



ALL MIXED LOTS ARE FULLY ILLUSTRATED ON OUR WEBSITE
WWW.NOONANS.CO.UK

352 Y

A SMALL COLLECTION OF DRESS ACCESSORIES, to include a 19th century seed pearl scarf clip, two pairs of pince-nez spectacles, a pair of tortoiseshell handled lorgnettes, a cased amber cheroot holder, a cased meerschaum pipe, a set of three diamond collar studs, a pair of pearl collar studs, a pair of 19th century rose-cut diamond earrings and a set of three mother-of-pearl buttons, etc., *various lengths*. (Quantity) **£150–£200**

353

A COLLECTION OF 19TH AND 20TH CENTURY PASTE BROOCHES, of assorted cluster and circlet design, mounted in gold, silver and base metal, *various lengths and diameters*. (16) **£80–£120**

354

A COLLECTION OF 19TH CENTURY GEM-SET BROOCHES, of assorted design, mostly mounted in gold, one brooch with vacant setting, *various lengths and diameters*. (Quantity) **£150–£200**

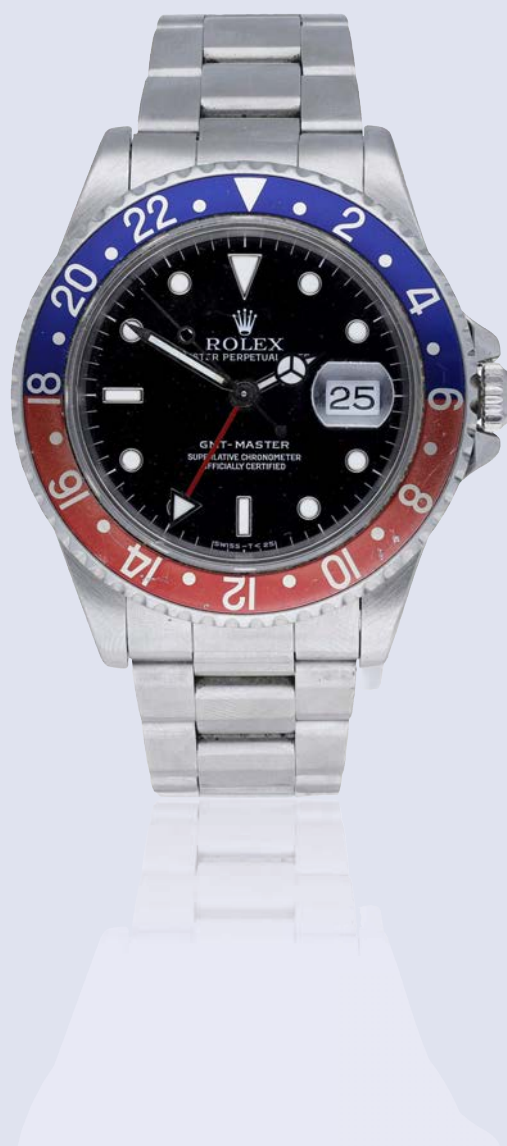


355

A COLLECTION OF VARIOUS BROOCHES AND STICK PINS, mostly 19th century, with jewellery box, *various lengths*. (Quantity) **£150–£200**

WATCHES

LOT
No 436



356

FRANÇOIS SHARDY. A SILVER CONSULAR CASED VERGE WATCH WITH PAINTED SCENE TO THE DIAL, CIRCA 1830.

Movement: gilded full plate, pierced and engraved balance bridge, fusee and chain.

Dial: white enamel, Arabic numerals, painted scene of a woman and child.

Case: silver; milled band, no. 9129, maker's mark RHC.

Signed: dial and movement.

Dimensions: diameter 56mm.

£80-£100



357

PARKINSON & BOUTS. A GOLD CONSULAR CASED WATCH, 1857.

Movement: gilded three quarter plate, lever escapement, no. 8862.

Dial: white enamel, Roman numerals, subsidiary seconds.

Case: 18ct gold, engine-turned rear cover with blank cartouche.

Signed: movement.

Dimensions: diameter 43mm.

£300-£500

358

VACHERON CONSTANTIN. A GOLD OPEN-FACED KEYLESS WATCH, CIRCA 1878.

Movement: jewelled lever escapement.

Dial: white enamel, Roman numerals.

Case: 18ct gold, gold cuvette with inscription, rear cover with engraved monogram, no. 149680.

Signed: cuvette.

Dimensions: diameter 35.5mm.

£500-£700



359

ENGLISH. A GOLD OPEN-FACED CENTRE SECONDS WATCH, 1886.

Movement: gilded three quarter plate, lever escapement, no. 86122.

Dial: white enamel, Roman numerals, outer Arabic seconds track.

Case: 18ct gold, gold cuvette, maker's mark I.J.T.N, Chester hallmark for 1886.

Signed: unsigned.

Dimensions: diameter 58mm.

£1,000-£1,500

360

SWISS. A GOLD OPEN-FACED WATCH, CIRCA 1860.

Movement: escapement lacking.

Dial: white enamel, Roman numerals.

Case: 18ct gold, gold cuvette engraved 'To the Queen, Howell James & Co, Regent Street, London', rear cover with blue enamel monogram.

Signed: Unsigned.

Dimensions: diameter 33mm.

£300–£500



361

J. B. DENT. A GOLD OPEN-FACED WATCH, CIRCA 1860.

Movement: cylinder escapement.

Dial: white enamel, Roman numerals within medallions, floral motif to the centre, subsidiary seconds.

Case: 18ct gold, gilt metal cuvette, finely engraved with foliate and floral designs.

Signed: movement.

Dimensions: diameter 34mm.

£300–£400

362

ENGLISH. A GOLD HUNTING CASED WATCH, 1879.

Movement: gilded full plate, lever escapement, engraved balance cock, no. 42667.

Dial: gilt, engine-turned chapter ring, Roman numerals, engraved floral motif to the centre, subsidiary seconds.

Case: 18ct gold, gilt movement cap, engine-turned covers, blank cartouche to the cover.

Signed: unsigned.

Dimensions: diameter 52.5mm.

£800–£1,200



363

SWISS. A GOLD OPEN-FACED KEYLESS WATCH, CIRCA 1890.

Movement: cylinder escapement.

Dial: gilt, Roman numerals, engine-turned chapter ring, engraved floral motif to the centre.

Case: 18ct gold, gilt metal cuvette, finely engraved floral decoration, monogram to the central cartouche, no. 64282.

Signed: unsigned.

Dimensions: diameter 42mm.

£400–£600

364

SWISS. A GOLD WRISTWATCH, CIRCA 1919.

Movement: manual winding.

Dial: gilt engine-turned centre, silvered chapter ring, Arabic numerals.

Case: 9ct gold, hinged back, no. 58179, maker's mark GS, London import mark for 1919, 9ct gold expanding bracelet.

Signed: unsigned.

Dimensions: diameter 26mm.

£80–£100



365

LECOMTE, GENEVÉ;. A GOLD HALF-HUNTING CASED KEYLESS WATCH, CIRCA 1900.

Movement: lever escapement.

Dial: white enamel, Roman numerals.

Case: 18ct gold, gold cuvette, glazed aperture, translucent pink enamel over an engine-turned ground, blue Roman numerals, engraved monogram to the rear cover.

Signed: dial.

Dimensions: diameter 37mm.

£300–£500

366

TUDOR. A GOLD WRISTWATCH, REF. 12856, CIRCA 1955.

Movement: manual winding, 15 jewels.

Dial: silvered, applied Arabic and dagger indexes, centre seconds.

Case: 9ct gold, snap-on back, no. 648683, Birmingham hallmark for 1955.

Signed: case, dial and movement, case signed Dennison.

Dimensions: diameter 30.5mm.

£200–£300



367

SWISS. A SILVER QUARTER REPEATING OPEN-FACED KEYLESS WATCH, CIRCA 1900.

Movement: jewelled lever escapement, repeating on coiled gongs.

Dial: white enamel, Roman numerals, subsidiary seconds.

Case: silver, silver cuvette, repeat slide to the band, cuvette engraved 'Exam'd by Goldsmiths Company, 112 Regents Street, London'.

Signed: unsigned.

Dimensions: diameter 52mm.

Together with silver Albert chain.

£100–£200

368

ROLEX. A SILVER HALF-HUNTING CASED WRISTWATCH, CIRCA 1917.

Movement: manual winding, 15 jewels.

Dial: white enamel, Arabic numerals, subsidiary seconds.

Case: silver, hinged cover, glazed aperture, black enamel Arabic numerals, London import mark for 1917.

Signed: case and movement.

Dimensions: diameter 35mm.

Together with Swiss silver wristwatch (2)

£100-£150



369

TUDOR. A STAINLESS STEEL WRISTWATCH, REF. 7325, CIRCA 1956.

Movement: cal. 1260, manual winding, 15 jewels.

Dial: silvered, waffle patterned chapter ring, applied Arabic numerals, subsidiary seconds.

Case: stainless steel and chrome plated, snap-on back, no. 12856.

Signed: case, dial and movement, case signed Dennison.

Dimensions: diameter 30.5mm.

£60-£80



370

ROLEX. A STAINLESS STEEL WRISTWATCH, REF. 3019, OYSTER, CIRCA 1955.

Movement: manual winding, 15 jewels.

Dial: two-tone silvered, Arabic numerals, outer minute track, engine-turned subsidiary seconds.

Case: stainless steel Oyster case, screw-down back and crown, no. 124854.

Signed: case, dial and movement.

Dimensions: diameter 23.5mm.

£200-£300



371

TUDOR. A CHROME PLATED AND STEEL WRISTWATCH, REF. 768, CIRCA 1968.

Movement: cal. 59, manual winding, 17 jewels.

Dial: silvered, Arabic numerals, outer minute track, subsidiary seconds.

Case: chrome plated, snap-on steel back, no. 628558.

Signed: case, dial and movement.

Dimensions: diameter 31mm.

£60-£80

372

OMEGA. A STAINLESS STEEL AUTOMATIC WRISTWATCH, SEAMASTER, CIRCA 1960.

Movement: automatic.

Dial: silvered, linear finish, applied baton indexes, centre seconds.

Case: stainless steel waterproof case.

Signed: case, dial and movement.

Dimensions: diameter 34mm.

£150-£200



373

OMEGA. A GOLD PLATED AUTOMATIC WRISTWATCH WITH DATE, REF. 162.009, CIRCA 1964.

Movement: cal.562, automatic, 24 jewels, no. 21872656.

Dial: silvered, applied baton indexes, aperture for date.

Case: gold plated, stainless steel snap-on back.

Signed: case, dial and movement.

Dimensions: diameter 32.5mm.

Together with an unsigned expanding bracelet.

£100-£150

374

ROTARY. A GOLD WRISTWATCH, MAXIMUS, CIRCA 1960.

Movement: manual winding, 17 jewels.

Dial: silvered, applied dagger indexes, centre seconds.

Case: 9ct gold, back with engraving.

Signed: dial.

Dimensions: diameter 33mm.

Together with a plated expanding bracelet.

£100-£150



375

ROTARY. A GOLD RECTANGULAR BRACELET WATCH, CIRCA 1973.

Movement: manual winding, 21 jewels.

Dial: gilt, applied baton indexes.

Case: 9ct gold, snap-on back, integral woven bracelet, London import mark for 1973.

Signed: dial.

Dimensions: length 29mm, width 32.5mm, bracelet circumference approximately 185mm.

£600-£800

376

ORIS. A STAINLESS STEEL WRISTWATCH WITH DATE, ANTI-SHOCK, CIRCA 1960.

Movement: cal. 704, manual winding, 7 jewels.

Dial: black, Arabic numerals, outer date track, subsidiary seconds.

Case: stainless steel, screw-down back.

Signed: case, dial and movement.

Dimensions: diameter 28mm.

£100–£150



377

TUDOR. A STAINLESS STEEL WRISTWATCH, REF. 4540, OYSTER, CIRCA 1960.

Movement: manual winding, 17 jewels.

Dial: silvered, applied Arabic and dagger indexes, centre seconds.

Case: stainless steel, screw-down back and crown, no. 467149.

Signed: case, dial and movement.

Dimensions: diameter 33.5mm.

Together with an unsigned expanding bracelet.

£100–£150

378

TUDOR. A CHROME PLATED AND STEEL WRISTWATCH, REF. 768, CIRCA 1968.

Movement: cal. 59, manual winding, 17 jewels.

Dial: silvered, Arabic numerals, outer minute track, subsidiary seconds.

Case: chrome plated, snap-on steel back, no. 628985.

Signed: case, dial and movement.

Dimensions: diameter 31mm.

£60–£80



379

OMEGA. A STAINLESS STEEL AUTOMATIC WRISTWATCH, REF. 165.002, SEAMASTER, CIRCA 1966.

Movement: cal. 552, automatic, 24 jewels, no. 24749622.

Dial: silvered, applied baton indexes, centre seconds.

Case: stainless steel, screw-down back.

Signed: case, dial and movement.

Dimension: diameter 34mm.

£200–£300

380

JAEGER-LECOULTRE. A STAINLESS STEEL AND CHROME PLATED MILITARY ISSUE RAF PILOT'S WATCH, CIRCA 1942.

Movement: cal. 470, manual winding, no. 250148.

Dial: silvered, Arabic numerals, centre seconds.

Case: stainless steel, snap-on back, fixed lugs, no. B 161614, engraved with the Broad Arrow, 6B/159 A23362.

Signed: dial and movement.

Dimensions: diameter 32mm.

£500-£700

Provenance: From the late Bob Culling collection

During the Second World War the RAF navigators and pilots were issued with watches made by brands such as Omega, Longines and Jaeger-LeCoultre.

They are identifiable by the MoD's specifications such as black Arabic numerals, centre seconds, fixed lugs and blued steel non-luminous hands. The cases are marked by the RAF stores reference number 6B/159 which refers to aircraft navigation equipment.



381

JAEGER-LECOULTRE. A CHROME PLATED AND STEEL WRISTWATCH, CIRCA 1945.

Movement: cal. P460, manual winding, no. 381163.

Dial: silvered, two-tone, Arabic numerals, outer minute track, subsidiary seconds.

Case: chrome plated, steel snap-on back, no. B 331571.

Signed: case, dial and movement.

Dimensions: diameter 30.5mm.

£200-£300

382

OMEGA. A STAINLESS STEEL AND GOLD PLATED AUTOMATIC WRISTWATCH, REF. 168.005, CIRCA 1966.

Movement: cal. 564, automatic, 24 jewels, no. 24765553.

Dial: gilt, applied Arabic and baton indexes, date aperture, centre seconds.

Case: stainless steel and gold plated, screw-down back.

Signed: case, dial and movement.

Dimensions: diameter 34mm.

£100-£150



383

OMEGA. A GOLD AUTOMATIC WRISTWATCH WITH DATE, REF. 165/6-5003, SEAMASTER, CIRCA 1964.

Movement: cal. 562, automatic, 24 jewels, no. 20986776.

Dial: silvered, applied baton indexes, aperture for date.

Case: 9ct gold, screw-down back, no. 339786, Birmingham hallmark for 1964.

Signed: case, dial and movement, case stamped A.L.D.

Dimensions: diameter 34mm.

£400-£600

384

VACHERON CONSTANTIN. A GOLD WRISTWATCH, CIRCA 1945.

Movement: cal. V453, manual winding, 17 jewels, no. 460771.

Dial: silvered, applied Arabic and baton indexes, engine-turned subsidiary seconds.

Case: 18ct gold, snap-on back, tear-drop lugs, no. 299002.

Signed: case, dial and movement.

Dimensions: diameter 32.5mm.

£2,000–£3,000



385

VERTEX. A LADY'S PLATINUM AND DIAMOND-SET COCKTAIL WATCH, CIRCA 1920.

Movement: manual winding, 17 jewels.

Dial: silvered, Arabic numerals.

Case: platinum, hinged back, diamond-set bezel and lugs, no. 484/7307.

Signed: case and movement.

Dimensions: diameter 23mm.

Together with a later 9ct gold bracelet.

£600–£800



386

A. SCHILD. A LADY'S SAPPHIRE AND DIAMOND RECTANGULAR ART DECO COCKTAIL WATCH, CIRCA 1930.

Movement: manual winding, 17 jewels.

Dial: silvered, Arabic numerals.

Case: platinum, diamond and sapphire-set bezel and hinged lugs.

Signed: movement.

Dimensions: length including lugs 50mm, width 16mm.

£100–£150

387

TISSOT. A LADY'S GOLD BRACELET WATCH, CIRCA 1961.

Movement: cal. 709, manual winding, 17 jewels.

Dial: silvered, applied baton indexes.

Case: 9ct gold, snap-on back, no. 12085, London hallmark for 1961, integral 9ct gold bracelet.

Signed: dial and movement.

Dimensions: diameter 17mm, bracelet circumference approximately 160mm.

£200–£300



388

OMEGA. A LADY'S GOLD SQUARE BRACELET WATCH, REF. 1061, Genève circa 1972.

Movement: manual winding, no. 35257456.

Dial: silvered, applied baton indexes.

Case: 9ct gold, snap-on back, no. 7115574, integral woven bracelet.

Signed: case, dial, movement and bracelet.

Dimensions: length 19.5mm, width 19.5mm, bracelet circumference approximately 165mm.

£400–£600

389

BOUCHERON. A LADY'S GOLD AUTOMATIC SQUARE WRISTWATCH WITH DATE, CIRCA 1970.

Movement: cal. 2551, automatic, 21 jewels.

Dial: gilt, Roman numerals, date aperture.

Case: 18ct gold, snap-on back, hobnail bezel, sapphire cabochon-set winding crown, no. 81282 82056.

Signed: case, dial and movement.

Dimensions: length 22.5mm, width 22.5mm.

£300-£500



390

DELANEAU. A GOLD OVAL DUAL DIAL WRISTWATCH, CIRCA 1980.

Movement: dual manual winding movements, 17 jewels.

Dial: tiger's eye.

Case: 18ct gold, snap-on back, no. 1657.

Signed: dial.

Dimensions: length 27mm width 33mm.

£700-£900

391

BAUME & MERCIER. A LADY'S GOLD HEXAGONAL WRISTWATCH, REF. 48335, CIRCA 1980.

Movement: quartz.

Dial: gilt.

Case: 18ct gold, snap-on back, textured bezel, no. 1006339, gold plated buckle.

Signed: case, dial, movement and buckle.

Dimensions: length 23mm, width 25mm.

£200-£300



392

GIRARD-PERREGAUX. A GOLD PLATED RECTANGULAR WRISTWATCH, REF. 4500, CIRCA 1980.

Movement: cal. 741-239, manual winding, 17 jewels.

Dial: gilt, applied baton indexes.

Case: gold plated, snap-on back.

Signed: case, dial and movement.

Dimensions: length 26mm, width 22.5mm.

£100-£200

393

ROLEX. A GOLD RECTANGULAR WRISTWATCH, REF. 2732, CIRCA 1938.

Movement: manual winding, 15 jewels.

Dial: silvered, gilt baton indexes, subsidiary seconds

Case: 9ct gold, snap-on back, no. 46224, Glasgow import mark for 1938.

Signed: case, dial and movement.

Dimensions: length including lugs 36mm, width 21.5mm.

£700-£900



394

SWISS. A GOLD OCTAGONAL WRISTWATCH, CIRCA 1920.

Movement: manual winding.

Dial: silvered, Roman numerals.

Case: 9ct gold, snap-on back, no. 302927, marker mark R&S.

Signed: unsigned.

Dimensions: length including lugs 31mm, width 25mm.

Together with an unsigned 9ct gold strap.

£200-£300



395

GIRARD-PERREGAUX. THREE GOLD PLATED WRISTWATCHES, CIRCA 1940 & LATER.

Movements: manual winding.

Dials: 1st: gilt; 2nd & 3rd: silvered.

Cases: gold plated, snap-on backs.

Signed: case, dials and movements.

Dimensions: 1st: 31.5mm x 25.5mm; 2nd: 35.5mm x 19.5mm; 3rd: 31.5mm x 25mm. (3)

£100-£150

396

CARTIER. A GOLD RECTANGULAR WRISTWATCH, TANK, LONDON HALLMARK FOR 1941.

Movement: manual winding, no. 110199.

Dial: silvered, Arabic numerals.

Case: 18ct gold, back secured by four screws, no. 1103 2270, stamped LAO (London Assay Office), London hallmark for 1941.

Signed: dial.

Dimensions: length 34.5mm, width 22.5mm

£5,000–£7,000

The Cartier Tank was created by Louis Cartier in 1917, inspired by the military tanks used on the Western Front in World War I.

Cartier founded their first London store in 1902 in 4 New Burlington Street. Only three years later they moved to where the store remains today at 175-177 New Bond Street.

The top floors of the building were used for their workshops where they trained English jewellers and watchmakers in the Cartier style and aesthetic. From 1920 to 1966, Cartier London sold wristwatches using movements from companies, such as Vacheron Constantin, Audemars Piguet and Jaeger-LeCoultre.

The London workshops went on to produce its own line of wristwatches in the 1960's. These pieces have become symbols of innovative design, creativity and craftsmanship, which includes the much sought after Cartier Crash with its unique asymmetric case.



397

GUCCI. THREE WRISTWATCHES, CIRCA 1990.

Movements: quartz.

Dials: 1st & 2nd: black; 3rd: grey.

Cases: 1st & 2nd: gold plated; 3rd: stainless steel and gold plated.

Signed: dials and cases.

Dimensions: 1st: 33mm; 2nd: 30mm;

3rd: 32mm.

£80-£100



398

CARTIER. A GILT METAL OVAL DESK TIMEPIECE WITH ALARM, BAIGNOIRE, REF. 7519, CIRCA 1990.

Movement: quartz.

Dial: white, Roman numerals, white alarm hand.

Case: gilt metal, simulated wood lacquered bezel, hinged strut, no. 03843.

Signed: case, dial and movement.

Dimensions: length 90.5mm, width 73mm.

Together with presentation case.

£150-£200



399

CARTIER. A SQUARE GILT METAL DESK TIMEPIECE WITH ALARM, REF. 7513, CIRCA 1990.

Movement: quartz.

Dial: white, Roman numerals, white alarm hand.

Case: gilt metal, burgundy bezel, hinged strut, no. 01351, lacking crown to case back to adjust the alarm.

Signed: case and dial.

Dimensions: height 74.5mm, width 74.5mm.

£100-£150

400

MUST DE CARTIER. A LADY'S GOLD PLATED WRISTWATCH, REF. 590004, CIRCA 1990.

Movement: quartz.

Dial: silvered, Roman numerals, inner minute track, secret signature at VII.

Case: gold plated, back secured by two screws, T-bar lugs, sapphire cabochon-set winding crown, no. 095696, gold plated deployant buckle.

Signed: case, dial, movement and buckle.

Dimensions: diameter 24mm.

£200-£300



401

MUST DE CARTIER. A LADY'S GOLD PLATED WRISTWATCH, REF. 119213, CIRCA 1990.

Movement: quartz.

Dial: gilt with burgundy background, Roman numerals.

Case: gold plated, back secured by two screws, T-bar lugs, sapphire cabochon-set winding crown, gold plated buckle.

Signed: case, dial and movement.

Dimensions: diameter 24mm.

£150-£200

402

MUST DE CARTIER. A LADY'S GOLD PLATED RECTANGULAR WRISTWATCH, TANK, CIRCA 1980.

Movement: manual winding, 17 jewels.

Dial: cream, Roman numerals, secret signature at VII.

Case: gold plated, back secured by four screws, sapphire cabochon-set winding crown, no. 6 013714.

Signed: case, dial and movement.

Dimensions: length 30mm, width 23mm.

£200-£300



403

CARTIER. A GILT METAL DESK TIMEPIECE WITH ALARM, REF. 6602, TORTUE, CIRCA 1990.

Movement: quartz.

Dial: white, Roman numerals, white alarm hand.

Case: gilt metal, burgundy band to base, hinged strut, no. 1U07688.

Signed: case and dial.

Dimensions: height 86mm, width 75mm.

Accessories: presentation case.

£200-£300



404

SWISS. A LADY'S PLATINUM AND DIAMOND-SET COCKTAIL WATCH, CIRCA 1920.

Movement: manual winding, 15 jewels.

Dial: silvered, Arabic numerals.

Case: platinum, hinged bezel, diamond-set bezel and lugs, later 9ct white gold bracelet.

Signed: unsigned.

Dimensions: diameter 28mm.

£1,500–£2,000

405

OMEGA. A LADY'S GOLD OVAL BRACELET WATCH, GENÈVE, CIRCA 1972.

Movement: cal. 825, manual winding, no. 35962982.

Dial: gilt, textured pattern, applied baton indexes.

Case: 9ct gold, snap-on back, no. 7115550, integral 9ct gold chain bracelet, London import mark for 1974.

Signed: case, dial, movement and bracelet.

Dimensions: length 22mm, width 20mm, bracelet circumference approximately 150mm

£300–£400



406

SWISS. A LADY'S GOLD AND ENAMEL BRACELET WATCH, CIRCA 1980.

Movement: quartz.

Dial: black, Roman and baton indexes.

Case: 18ct gold, snap-on back, no. 9845, leaf motif bezel with black enamel inserts, integrated rope twist bracelet.

Signed: dial signed P.B

Dimensions: length 16mm, width 19mm.

£300–£500

407

OMEGA. A LADY'S GOLD, DIAMOND AND SAPPHIRE-SET BRACELET WATCH, DE VILLE, CIRCA 1984.

Movement: quartz.

Dial: gilt, applied baton indexes.

Case: 18k gold, snap-on back, diamond and sapphire-set bezel, integral tapered bracelet.

Signed: case, dial, movement and bracelet.

Dimensions: length 22.5mm, width 21mm, bracelet circumference 155mm.

£800–£1,200



408

ROLEX. A LADY'S GOLD AND DIAMOND-SET BRACELET WATCH, REF. 2673, ORCHID, CIRCA 1977.

Movement: cal. 1400, manual winding, 18 jewels.

Dial: blue, applied baton indexes.

Case: 18ct gold, snap-on back, diamond-set bezel with tapered baguettes, later gold woven bracelet.

Signed: case, dial and movement.

Dimensions: length 28mm, width 26mm, bracelet circumference approximately 160mm.

£2,600–£3,200



409

ZENITH. TWO WRISTWATCHES, CIRCA 1940 & 1960.

Movements: manual winding.

Dials: silvered.

Cases: 1st: gold plated; 2nd: steel.

Signed: dial and movements.

Dimensions: 1st: 34mm; 2nd: 35mm.

£100-£150



410

GARRARD. THREE STAINLESS STEEL WRISTWATCHES, CIRCA 1960 & 1970.

Movements: 1st: automatic; 2nd & 3rd: manual winding.

Dials: silvered.

Cases: stainless steel.

Signed: dials.

Dimensions: 1st: 35mm; 2nd: 34mm; 3rd: 29.5mm. (3)

£80-£100



411

GIRARD-PERREGAUX. THREE STAINLESS STEEL WRISTWATCHES, CIRCA 1960.

Movements: 1st: automatic; 2nd & 3rd: manual winding.

Dials: silvered.

Cases: stainless steel.

Signed: dial and movement.

Dimensions: 1st: 33mm; 2nd: 34.5mm; 3rd: 35mm. (3)

£100-£150

412

JAEGER-LECOULTRE. A STAINLESS STEEL CUSHION-FORM AUTOMATIC WRISTWATCH WITH DATE AND ALARM, REF. E872, MEMOVOX, CIRCA 1970.

Movement: cal. 916, automatic, 17 jewels, no. 2093476.

Dial: blue, applied baton indexes, inner rotating alarm disc, aperture for date, centre seconds.

Case: stainless steel, screw-down back, no. 1272707.

Signed: case, dial and movement.

Dimensions: length including lugs 45mm, width 38mm.

Together with an unsigned stainless steel bracelet.

£700-£900



413

GIRARD-PERREGAUX. A STAINLESS STEEL TONNEAU-FORM WRISTWATCH WITH BRACELET, CHRONOMETER HF, GYROMATIC, CIRCA 1968.

Movement: automatic, 39 jewels.

Dial: silvered, textured finish, applied baton indexes, aperture for date, centre seconds.

Case: stainless steel, screw-down back, no. 9000B, stainless steel bracelet.

Signed: case, dial, movement and bracelet.

Dimensions: length 38mm, width 35mm.

£100-£150

414

OMEGA. A GOLD PLATED AUTOMATIC TONNEAU-FORM WRISTWATCH, REF. 165022, SEAMASTER COSMIC, CIRCA 1968.

Movement: cal. 552, automatic, 24 jewels.

Dial: silvered, Applied baton indexes, centre seconds.

Case: gold plated, no. 165022SP - Tool 105.

Signed: case, dial and movement.

Dimensions: length 36mm, width 33mm.

Together with an unsigned gold plated bracelet.

£100-£200



415

BAUME & MERCIER. A GOLD AUTOMATIC WRISTWATCH WITH DATE, REF. 35012, BAUMATIC, CIRCA 1955.

Movement: cal. AS 1581, automatic, 17 jewels.

Dial: silvered, applied baton indexes, aperture for date, centre seconds.

Case: 18ct gold, snap-on back, no. 172565.

Signed: dial and movement.

Dimensions: diameter 33mm.

Together with an unsigned 18ct gold bracelet.

£600-£900

416

GUCCI. A STAINLESS STEEL AND GOLD PLATED CHRONOGRAPH BRACELET WATCH, REF. 9400, CIRCA 1990.

Movement: quartz.

Dial: black, baton and dot indexes, subsidiary dials for constant seconds, 60-minute and 1/10th second registers.

Case: stainless steel, snap-on back, gold plated bezel, no. 0002375, stainless steel and gold plated bezel.

Signed: case, dial, movement and bracelet.

Dimensions: diameter 38mm, bracelet circumference approximately 180mm.

£80–£100



417

CARTIER. A STAINLESS STEEL AND RUBBER WRISTWATCH WITH DATE AND BRACELET, REF. 2427, AUTOSCAPH 21, CIRCA 2000.

Movement: automatic, 21 jewels

Dial: black with logo design, triangular and baton indexes, magnified aperture for date.

Case: stainless steel, back secured by six screws, no. 10809PL, Roman numerals to the bezel, rubber and stainless steel bracelet.

Signed: case, dial, movement and clasp.

Dimensions: diameter 36.5mm, bracelet circumference approximately 190mm.

Accessories: presentation case.

£400–£600



418

BREITLING. A TITANIUM AND GOLD MINUTE REPEATING CHRONOGRAPH WRISTWATCH WITH DIGITAL DISPLAY, DUAL TIME ZONE AND ALARM, REF. E65362, AEROSPACE, REPETITION MINUTES, CIRCA 1999.

Movement: quartz.

Dial: matt dark grey, luminescent Arabic and baton indexes.

Case: titanium, rotating calibrated bezel, snap-on back, titanium link bracelet.

Signed: case, dial, movement and bracelet.

Dimensions: diameter 40mm, bracelet circumference approximately 175mm.

Accessories: warranty, Attestation de Chronomètre, instruction booklet, two spare links and presentation case.

£600–£800



419

OTIUM. A STAINLESS STEEL WRISTWATCH, TRIGULATEUR, NO. 0069, CIRCA 2016.

Movement: manual winding, 17 jewels.

Dial: machined metal plate, three subsidiary dials aligned horizontally for hours, minutes and constant seconds.

Case: stainless steel, screw-down sapphire crystal display back, left-hand side crown, stainless steel buckle.

Signed: case, dial and buckle.

Dimensions: diameter 42mm.

Accessories: booklet and presentation case.

£200–£300

Otium was founded in 1999 by the watchmaker and designer Dirk Hillgruber. His philosophy is to invent watches with unusual ways to display time.



KING CHARLES III CORONATION LIMITED EDITION WRISTWATCH



420

BREITLING. A RARE LIMITED EDITION STAINLESS STEEL DIVER'S WRISTWATCH MADE FOR MEMBERS OF THE ROYALTY AND SPECIALIST PROTECTION UNIT TO COMMEMORATE THE CORONATION OF KING CHARLES III, SUPEROCEAN 42, REF. A17375, CIRCA 2023

Movement: cal. 17, automatic, 26 jewels.

Dial: dark blue, applied baton indexes, centre seconds, calibrated inner bezel, King Charles cypher at 6 o'clock,

Case: stainless steel, screw-down back, unidirectional ratcheted bezel, case back engraved with the Coronation Emblem, stainless steel bracelet.

Signed: case, dial, movement and bracelet.

Dimensions: diameter 42mm, bracelet circumference approximately 200mm.

Accessories: warranty card, swing tag, travel pouch and presentation case.

£5,000–£7,000

This rare Breitling SuperOcean 42 was produced to commemorate the Coronation of King Charles III. It was made for those serving as part of, and closely associated with, the 'Royalty and Specialist Protection' Unit (RaSP), as part of a limited production run of 189 pieces. The specialist Unit provides close protection to members of the British Royal Family, Government Ministers, including the Prime Minister, and visiting Heads of State.

The dial of this exceptional limited edition wristwatch displays the King's cypher and the case back is engraved with the Coronation Emblem which pays tribute to The King's love of the natural world. The centre seconds hand also has a purple tip, a colour synonymous with Royalty.



421

EBEL. A LADY'S GOLD AND DIAMOND-SET BRACELET WATCH WITH CONCEALED DIAL, CIRCA 1955.

Movement: cal. 50, manual winding.

Dial: silvered, applied Roman and dot indexes.

Case: 18ct gold, snap-on back, diamond-set hinged cover; integral tapered bracelet interspersed with diamonds.

Signed: dial and movement.

Dimensions: length 14mm, width 13.5mm, bracelet circumference approximately 155mm.

Accessories: original receipt.

£600–£800

422

BAUME & MERCIER. A GOLD WRISTWATCH, REF. 15607, CIRCA 1995.

Movement: quartz.

Dial: white, Roman numerals.

Case: 18ct gold, snap-on back, sapphire cabochon-set winding crown, no. 1561468.

Signed: case, dial and movement.

Dimensions: diameter 32mm.

£400–£600



423

BAUME & MERCIER. A GOLD CUSHION-FORM WRISTWATCH, REF. 17608, CIRCA 1990.

Movement: quartz.

Dial: white, gilt Roman numerals.

Case: 18ct gold, snap-on back, sapphire cabochon-set winding crown, no. 1730423, gold plated buckle.

Signed: case, dial and movement

Dimensions: length 30mm, with 30mm.

£300–£500

424

CHOPARD. A LADY'S GOLD AND DIAMOND-SET WRISTWATCH, REF. 20/5458, HAPPY DIAMONDS, CIRCA 2000.

Movement: quartz.

Dial: gilt.

Case: 18ct gold, transparent ring with seven floating diamonds, snap-on back, diamond-set bezel and t-bar lugs, no. 4117 293816, gold plated buckle.

Signed: case, dial, movement and buckle.

Dimensions: diameter 26.5mm.

£1,500–£2,000



425

FAVRE-LEUBA. TWO WRISTWATCHES, CIRCA 1960.

Movements: manual winding.

Dials: 1st: blue; 2nd: silvered.

Cases: 1st: stainless steel; 2nd: gold plated.

Signed: cases, dials and movements.

Dimensions: 1st: 35.5mm; 2nd: 33mm. (2) £80-£100



426

OMEGA. A STAINLESS STEEL WRISTWATCH WITH RED DIAL, SEAMASTER 600, CIRCA 1964.

Movement: cal. 601, manual winding, 17 jewels, no. 21993187.

Dial: red, Arabic and dagger indexes, centre seconds.

Case: stainless steel, screw-down back, no. 2495 18.

Signed: case, dial and movement.

Dimensions: diameter 34.5mm.

£300-£400

427

OMEGA. A STAINLESS STEEL WRISTWATCH WITH DAY, DATE AND BRACELET, SEAMASTER, CIRCA 1984.

Movement: cal. 1425, quartz, 7 jewels, no. 46247622.

Dial: silvered, gilt engine-turned chapter ring, applied baton indexes, aperture for day in English/Italian and date.

Case: stainless steel, snap-on back, stainless steel bracelet.

Signed: case, dial, movement and bracelet.

Dimensions: diameter 33mm, bracelet circumference approximately 195mm.

£80-£100



428

LONGINES. A GOLD PLATED WRISTWATCH WITH DATE, REF. 1096, CIRCA 1975.

Movement: cal. 6952, manual winding, 17 jewels, no. 53608434.

Dial: silvered, applied baton indexes, aperture for date.

Case: gold plated, snap-on back, no. 18047471.

Signed: case, dial and movement.

Dimensions: diameter 33.5mm.

Accessories: presentation case.

Together with an expandable bracelet.

£100-£150

429

JAEGER-LECOULTRE. A STAINLESS STEEL AND GOLD RECTANGULAR WRISTWATCH, REF. 268.D.47, REVERSO, CIRCA 2015.

Movement: quartz.

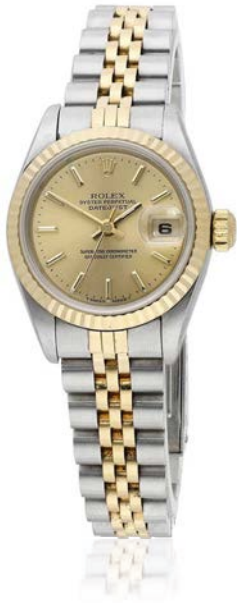
Dial: silvered, guilloché applied Arabic numerals.

Case: stainless steel and gold Reverso case, plain back, no. 2974166, stainless steel double folding clasp.

Signed: case, dial, movement and clasp.

Dimensions: length including lugs 39.5mm, width 24mm.

£1,200–£1,500



430

ROLEX. A LADY'S STAINLESS STEEL AND GOLD AUTOMATIC WRISTWATCH WITH DATE AND BRACELET, REF. 69173, DATEJUST, CIRCA 1998.

Movement: cal. 2135, automatic, 29 jewels.

Dial: gilt, applied baton indexes, magnified date aperture, centre seconds.

Case: stainless steel and gold Oyster, screw-down back and crown, no. U749518, stainless steel and gold Jubilee bracelet.

Signed: case, dial, movement and bracelet.

Dimensions: diameter 26mm, bracelet circumference approximately 180mm.

Accessories: certificate, booklets, wallet & presentation case.

£2,000–£3,000

431

TAG HEUER. A LADY'S STAINLESS STEEL WRISTWATCH WITH DATE AND BRACELET, REF. WJ1316, LINK 200 METERS, CIRCA 2008.

Movement: quartz.

Dial: mother-of-pearl, applied baton indexes, aperture for date, centre seconds.

Case: stainless steel, screw-down back, rotating calibrated bezel, no. DW6787, stainless steel bracelet.

Signed: case, dial, movement and bracelet signed.

Dimensions: diameter 27mm, bracelet circumference approximately 180mm.

Accessories: presentation case.

£200–£300



432

CARTIER. A STAINLESS STEEL AND FAUX-LEATHER TRAVEL TIMEPIECE WITH ALARM, REF. 3023, PASHA, CIRCA 2010.

Movement: quartz.

Dial: white, Arabic and baton indexes, alarm hand.

Case: stainless steel, back secured by six screws, no. 700441AL, pink faux-leather folding cover.

Signed: dial and case.

Dimensions: steel case diameter 46.5mm.

Accessories: instructions and presentation case.

£200–£300

433

OTIUM, A STAINLESS STEEL WRISTWATCH, TRIGULATEUR, NO. 0119, CIRCA 2016.

Movement: manual winding, 17 jewels.

Dial: machined metal plate, three subsidiary dials aligned horizontally for hours, minutes and constant seconds.

Case: stainless steel, screw-down sapphire crystal display back, left-hand side crown.

Signed: case and dial

Dimensions: diameter 42mm.

Accessories: booklet and presentation case.

£200–£300

Otium was founded in 1999 by the watchmaker and designer Dirk Hillgruber. His philosophy is to invent watches with unusual ways to display time.



434

SINN. A STAINLESS STEEL TONNEAU-FORM AUTOMATIC CHRONOGRAPH PILOT'S WATCH WITH DAY AND DATE, REF. 140/26, CIRCA 1990.

Movement: Lemania 1500, automatic, 17 jewels.

Dial: black, baton indexes, subsidiary dials for constant seconds, 24-hours and 12-hour register; apertures for date and day in German.

Case: stainless steel, screw-down back, stainless steel buckle.

Signed: case, dial, movement and buckle.

Dimensions: length including lugs 45mm, width 43mm.

Together with a stainless steel bracelet.

£1,200–£1,800

435

TAG HEUER. A STAINLESS STEEL CHRONOGRAPH WRISTWATCH WITH DATE AND BRACELET, REF. CAC1112, FORMULA 1, CIRCA 2006.

Movement: quartz.

Dial: red, applied Arabic and baton indexes, subsidiary dials for constant seconds, 10-hour and 30-minute register; aperture for date.

Case: stainless steel, screw-down back, rotating black calibrated bezel, no.CR5007, stainless steel bracelet.

Signed: case, dial, movement and bracelet.

Dimensions: diameter 42mm, bracelet circumference approximately 180mm.

Accessories: three spare links, presentation case.

£300–£500

The Finnish racing driver Kimi Räikkönen was photographed wearing his Tag Heuer F1 chronograph watch for the advertising of this model.



436

ROLEX. A STAINLESS STEEL AUTOMATIC DUAL TIME ZONE WRISTWATCH WITH DATE AND BRACELET, REF. 16700, GMT-MASTER, CIRCA 1991.

Movement: cal. 3175, automatic, 31 jewels.

Dial: black, applied triangular, dot and baton indexes, magnified date aperture, red and white dual time zone hand.

Case: stainless steel Oyster, 24-hour blue and red calibrated bezel, no. X976165.

Signed: case, dial, movement and bracelet.

Dimensions: diameter 40mm, bracelet circumference approximately 185mm.

Accessories: booklets, spare link and presentation case.

£6,500–£7,500



437

OMEGA. TWO GOLD PLATED WATCHES, CIRCA 1960.

Movements: manual winding, 1st: 25019078; 2nd: 19313423.

Dials: gilt.

Cases: gold plated.

Signed: 1st: case, dial and movement; 2nd: dial and movement.

Dimensions: 1st: 34mm; 2nd: 29.5mm. (2) £100-£150



438

OMEGA. TWO GOLD PLATED BRACELET WATCHES WITH DATE, DE VILLE, CIRCA 1990.

Movements: quartz.

Dials: 1st: white; 2nd: gilt.

Cases: gold plated, integral stainless steel and gold plated bracelets.

Signed: case, dial and movements.

Dimensions: 1st: 30mm; 2nd: 23mm. (2)

£80-£100



439

SEIKO. A GOLD PLATED AUTOMATIC DIVER'S WATCH, 5 SPORTS TOGETHER WITH TWO FURTHER WRISTWATCHES, CIRCA 2020.

Movement: cal. 4R36A, automatic, 24 jewels.

Dial: black, dot indexes, apertures for day in English/Arabic and date.

Case: gold plated, display back.

Signed: case, dial and movement.

Dimensions: diameter 45mm.

Together with a stainless steel quartz Sekonda chronograph watch and a stainless steel automatic Orient watch.

£60-£80

440

VARIOUS MAKERS. A GROUP OF FIVE WRISTWATCHES.

The group comprising: two gold plated Benrus watches; a steel Wintex watch; a steel Baume watch; a steel digital watch (5)

£60-£80

441

VARIOUS MAKERS. A GROUP OF FOUR STAINLESS STEEL DIGITAL WRISTWATCHES, CIRCA 1970.

The group comprising: two Sicura jump-hour watches; a unsigned watch; a Mentor watch. (4)

£50-£70

442

BULOVA. A GROUP OF FOUR WRISTWATCHES.

Movements: three quartz and a manual winding movement.

Dials: white; silvered; gilt.

Cases: stainless steel/gold plated; gold plated.

Signed: cases, dials and movements.

Dimensions: 1st: 37mm; 2nd: 28mm x 32mm; 3rd: 33.5mm; 4th 36.5mm.

£60-£80

443

ORIS. A GROUP OF SIX WRISTWATCHES.

Movements: manual winding.

Dials: gilt; green; blue; silver; metallic green/blue.

Cases: four gold plated; two stainless steel.

Dimensions: 35mm; 32mm; 32.5mm; 30mm; 32.5mm; 31.5mm.

£80-£100

444

VARIOUS MAKERS. A GROUP OF SIX WRISTWATCHES.

The group comprising: three gold plated quartz Dunhill watches; a stainless steel quartz Dunhill chronograph watch; stainless steel Dupont watch; a gold plated automatic Rotary watch (6)

£80-£100

445

VARIOUS MAKERS. A GROUP OF SIX CHRONOGRAPH WATCHES.

The group comprising: a stainless steel Globus Chrono watch; a gold plated Rone watch; a stainless steel Sully Special watch; a stainless steel Tollet watch; a stainless steel Gigandet watch; a stainless steel progress watch (6)

£80-£100

446

TISSOT. A GROUP OF SIX WRISTWATCHES, ROCKWATCH & WOODWATCH, CIRCA 1985.

Movements: quartz.

Dials: various colours.

Cases: stone and wood, steel plate backs secured by six screws.

Signed: dial and cases.

Dimensions: diameters 30mm & 32mm.

£80-£100

447

LONGINES. FOUR GOLD-PLATED WRISTWATCHES.

Movements: quartz.

Dials: white; gilt; guilloché.

Cases: gold plated.

Signed: case, dial and movements.

Dimensions: diameters 33mm & 37.5mm.

£100-£150

448

VARIOUS MARKERS. A GROUP OF FOUR WRISTWATCHES.

The group comprises: a stainless steel Citizen Eco Drive chronograph; a gold plated Borel calendar watch with moon-phases; a gold plated Goer watch; a steel Citizen diver's watch (4)

£100-£200

449

VARIOUS MAKERS. A GROUP OF EIGHT WRISTWATCH.

The group comprising: a lady's gold plated Longines bracelet watch; stainless steel automatic Rotary watch; 9ct gold Record watch; 9ct gold Tissot watch; stainless steel Roamer watch; three Raymond Weil gold plated quartz watches. (8)

£200-£300

SILVER & OBJECTS OF VERTU

LOT
No 493





450

TWO 9CT GOLD VESTA CASES, both plain, with engraved presentation inscriptions, the first initialled and dated 1910, by maker Henry Matthews, Birmingham 1908, the second engraved 'A bundle of notes PRESENTED BY Alexander D. Murray, BARRY 1914', by makers Deacon & Francis, Birmingham 1913, both with ring suspensory loops, lengths 42 and 43mm. £900-£1,200



451

TWO 9CT GOLD VESTA CASES, both engine-turned decorated, the first with circular vacant reserve, by Henry Matthews, Birmingham 1914, the second by Edwards & Son, Birmingham 1919, both with ring suspensory loops, lengths 46 and 48mm. £900-£1,200



452

TWO 9CT GOLD VESTA CASES, the first with engine-turned decoration, the front with vacant circular reserve, with ring suspension loop, by Smith & Bartlam, Birmingham 1945, the second plain, the front initialled 'B.S F-P', with ring suspension loop, lengths both 45mm. £900-£1,200

453

A GOLD AND SAPPHIRE SET VESTA CASE, with engine-turned sunray decoration, edged with repeating husk borders, the front centred with a rectangular rose-cut diamond panel, with canted corners, edged by a row of calibr -cut sapphires, with cabochon set thumbpiece, and suspensory loop, stamped '585', length 42.5mm. £800-£1,000

According to a PMI test on the XRF analyzer the gold is testing as 14ct.



454

A 9CT GOLD VESTA CASE, with engine-turned decoration and reeded borders, with suspensory loop, numbered 6273, maker's mark for Joseph Walton & Co, London 1920, dimensions 51 x 41mm. £600-£800



455

A 9CT GOLD VESTA CASE, with hinged locket compartment to the front enclosing oval glazed frame, the reverse engraved with presentation inscription 'Jack from McLew', engraved with retailer 'J C Vickery 117 to 183 Regent Street', by Cornelius Desormeaux Saunders & James Francis Hollings (Frank) Shepherd, hallmarked for Chester 1911, with ring suspension loop, length 51mm. £600-£800



456

A 9CT GOLD MATCH BOOK / VESTA CASE, engine-turned throughout with sloped border, with suspensory loop, initialed to the interior 'G.E.W 1927', by S Blanckensee & Son Ltd, Birmingham 1927, dimensions 61 x 44mm.

£600-£800



457

AN ANTIQUE MESH AND GEM-SET COIN PURSE, FRENCH, the pierced foliate gold frame inset with a step-cut emerald and two old cushion-cut diamonds, the meshwork with beaded drops below, French guarantee marks, total diamond weight approximately 0.60 carat, length 19.5cm. £1,600-£2,000



458

AN ART DECO STYPTOR AND GOLD MOUNTED MINAUDIÈRE BY VAN CLEEF & ARPELS, CIRCA 1935, of rectangular form with engine-turned decoration throughout, and agate set sprung thumbpiece, the fitted interior with mirrored lid, and containing compartments for lipstick, powder, a lighter and an unassociated silver and gold inset square compact hallmarked for Birmingham 1948, signed 'LA MINAUDIÈRE FOR VAN CLEEF & ARPELS', and to the inner rim 'SPECIALLY MADE FOR ASPREY', stamped 'STYPTOR'; with original Asprey black velvet and watered silk-lined slip case/handbag, *dimensions* 15.2 x 12.5cm. £1,000–£1,500



459

A VICTORIA SILVER VINAIGRETTE BY GEORGE UNITE, foliate engraved, enclosing pierced gilt grill, with ring attachment, Birmingham 1873, together with an Edwardian silver cheroot holder, Birmingham 1903. (2) £120–£150



460

A SILVER CIGARETTE CASE BY CARTIER LONDON, 1948, the polished bicolour case of flattened cylindrical form, with hinged lid and silver gilt ropetwist decoration, signed 'Cartier-London', sponsor's mark 'JC', London hallmark, in fitted maker's case, length approximately 8.5cm, depth 2.5cm. £400–£600





461

A SMALL COLLECTION OF LATE 18TH-19TH CENTURY BUCKLES, comprising a pair of English silver buckles by William Eaton or Eley, of arched cushion form with concave detailing and finely reeded borders, with hinged steel prongs and chape, maker's mark, guarantee mark; a brass pair of arched rectangular form, bicolour and with reeded, bead and faceted decoration, unmarked; and a single silver buckle, French, with scroll and shell decoration, French assay mark, largest diameter 7cm. (5) £150-£200



462

TWO 18TH CENTURY SILVER MARROW SCOOPS, A SILVER DOG NOSE SPOON AND SILVER RING HANDLED MEAT SKEWER, the first marrow scoop by Elizabeth Oldfield, London 1751, the second with maker's mark 'ID', possibly for Isaac D'Olier, Dublin 1793, the dog nose spoon with erased marks and the meat skewer by Atkin Brothers, Sheffield 1925. (4) £80-£100



463

A PAIR OF VICTORIA SILVER FISH SERVERS, of fiddle and thread pattern, engraved and pierce-decorated with flowerheads and scrollwork and engraved with armorial beneath coronet, by George Angell, London 1858, lengths 32 and 26cm. £120-£160



464

A RUSSIAN SILVER SOUP LADLE, of fiddle pattern, the handle engraved with cursive initials (G S?) and a trailing flower with single bloom, by Nikolay Shepelev, Riga, with kokoshnik mark for 1899-1908, length 35cm. £100-£150

Nikolay Shepelev is recorded as working between 1902 and 1919.



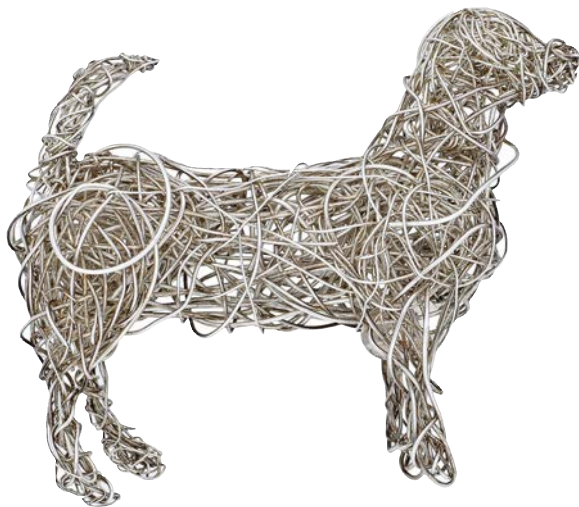
465

AN ART NOUVEAU SILVER TWIN SECTION BELT BUCKLE BY WILLIAM COMYNS, each of heart-shaped outline, and pierced decorated with cherubs with flowing hair, amidst flowers, hallmarked for London 1900, reverse stamped with Registration No. 317583, together with a twin section enameled buckle, gilt metal, first width 12.8cm, second 10cm. £100–£150



466

A SILVER MODEL CRADLE, in imitation of basketweave, with canopy and carrying handles, on rockers, with gilt interior; by Asprey & Co., London 1982, stamped 'STERLING ENGLAND', length 11cm. £300–£400



467

A SILVER WIREWORK MODEL OF A DOG, the hallmark on a disc attached between his forelegs, maker's mark 'E S', London 2013, length 11cm.

£200-£240

468

A SILVER BELT, 1909, designed as a series of shaped rectangular panels pierced and engraved with thistles amidst foliage, with twin section clasp of conforming design, maker's mark for Joseph Gloster Ltd., Birmingham hallmark, length 78cm.

£80-£100



469

AN 18CT GOLD WHISTLE BY SAMPSON MORDAN & CO., the flat polished whistle hallmarked for Chester 1909, maker's mark 'SM&Co', to plain suspensory loop, length including loop 43mm.

£300-£400





470

A PROPELLING PENCIL, the outer sleeve with bicoloured wrythen decoration, inner shaft stamped '14k', with ring suspension loop, length extended 11.5cm (including suspensory loop).

£150-£200



471

A 9CT GOLD CIGAR PIERCER, engine-turned decorated, with outer sleeve and ring suspension loop, by W. M. Ltd., Birmingham 1963, and a 9ct gold mounted penknife, the outer case engine-turned, containing steel scissors and blade, by Cohen & Charles, hallmarked Birmingham 1967, first length 8cm (including ring suspension), second 5.7cm.

£200-£300

472

AN 18CT GOLD FOB BY KURT WEISS FOR CARTIER, the tricolour panel on ring suspension with chain and T-bar, hallmarked for London 1976, signed 'Cartier', numbered '0156', and a 'C de Cartier' stainless steel and gold plated money clip, numbered '32703', signed 'Must de Cartier', lengths 12cm and 3.5cm.

£500-£700



473

TWO PAIRS OF 9CT GOLD COLLAR STIFFENERS BY ASPREY, of plain polished form, maker's marks, London hallmarks for 1975 and 1977, maker's red leather cases, lengths 5cm and 7.2cm.

£180-£220





474

AN 18CT GOLD FOUNTAIN PEN BY SHEAFFER, with snorkel filling mechanism and line-engraved exterior, London 1959, in maroon leather presentation case, case initialled, length 14.5cm. £600-£800



475

A BICOLOURED GOLD PLATED 'MUST DE CARTIER' BALLPOINT PEN BY CARTIER, of reeded design, signed, serial number C88533, with original box and papers, including guarantee certificate, date of purchase 26 January 1998, length 13.3cm. £80-£120

476

A VENDOME GREEN 'MALACHITE' LACQUER BALLPOINT PEN BY MUST DE CARTIER, the pen signed, serial number 'B26177', maker's case, length approximately 14cm. £100-£150





477

FORMERLY THE PROPERTY OF H.R.H. PRINCE MICHAEL OF KENT: A GEORGE VI SILVER THREE PIECE CHRISTENING SET BY WAKELY & WHEELER, comprising a fork, knife and spoon, with plain faceted handles, hallmarked for London 1941 and 1942, contained in fitted Goldsmiths & Silversmiths' Co. Ltd case, with hand written letter from his godmother, Lady Patricia Ramsay reading:

'For...on his christening 4th Aug. 1942 from his godmother Patsy' .

£200-£400

Provenance: Christies'; sale 20 November 2009, Property from the Collection of H.R.H. The Prince George, Duke of Kent KG, KT, and H.R.H. Princess Marina, Duchess of Kent CI, GCVO and their families, Lot 256.

This christening set was presented to Prince Michael of Kent on the occasion of his christening on 4 August 1942 by his godmother Lady Patricia Ramsay.

Lady Victoria Patricia Helena Ramsay (1886-1974) was a granddaughter of Queen Victoria. Upon her marriage to Alexander Ramsay in February 1919, she relinquished her title of H.R.H. Princess Patricia of Connaught.



478

FORMERLY THE PROPERTY OF HER ROYAL HIGHNESS THE PRINCESS MARGARET, COUNTESS OF SNOWDON

A ROCK CRYSTAL AND SAPPHIRE PARASOL HANDLE, FRENCH, CIRCA 1900, of tapered cylindrical form, the slightly domed gold terminal set with a chequerboard of circular-cut sapphires with rose-cut diamond highlights between, the base with a collar of kite-shaped sapphires and brass screw fitting, engraved with initial 'M', the terminal with French assay mark, length 6.8cm.

£500–£700

Provenance: Christie's, Property from the Collection of Her Royal Highness, The Princess Margaret, Countess of Snowdon, Sale 14 June 2006, Lot 534.



Alamy Images

Princess Margaret at a banquet celebrating the 40th anniversary of the Royal Air Force in 1958.



All lots are subject to extra charges which may be viewed in Ts and Cs 3, 4, 5 and 10 at the back of this catalogue.



479

AN AMERICAN SILVER TWO-DIVISION HORS D'OEUVRES DISH BY LEBOLT & CO., of plain design with planished finish, signed 'LEBOLT HAND MADE', and 'STERLING 929', London import marks for 1931, importer's mark 'CEB' for Catherine Elizabeth Britten, dimensions 20 x 28cm. £500-£700

Provenance: Lebolt & Co. jewellers and silversmiths were active in Chicago from 1912, manufacturers of Arts and Crafts handwrought sterling hollowware and flatware and jewellery, with stores in Chicago and New York.

Catherine Elizabeth Britten was registered at Wilmington Square, London WC1.



480

A PAIR OF SILVER PHOTOGRAPH FRAMES BY LIBERTY & CO., the plain polished oval frames each set with a lapis lazuli cabochon boss to either side, with easel supports, Sheffield 1988, both with retailer's box, height 22cm. £400-£600

481

A SILVER DRESSING TABLE MIRROR BY LIBERTY & CO., the plain polished oval mirror set with a lapis lazuli cabochon boss to either side, with easel support, Sheffield 1988, with retailer's box, height 22cm. £300-£500





482

A SET OF EIGHT SILVER MOUNTED PRINTED MINIATURES AFTER PAINTINGS BY RAPHAEL, comprising:

The marriage of the Virgin, 1504

La Fornarina, 1520

La Velata, 1515

The Virgin and Child with St John the Baptist, 1507

Pope Julius II, 1511-1512

Canigiani Holy Family, circa 1507-1508

Detail from: The Disputation of the Sacrament, 1508/9

The Virgin and Child with St John, 1510-1512,

The silver frames with maker's marks for Fattorini & Sons Ltd, Birmingham 1972, dimensions 37 x 28mm. £80-£120

483

A DAUM 'FUCHSIA' GLASS VASE, of square section, acid-etched and enamelled with flowering sprays and with gilt-enhanced lower border, the base signed in gilt 'Daum Nancy' and with cross of Lorraine, height 12.5cm.

£500-£700



484

A DAUM GLASS PANEL, acid-etched and enamelled with a forest scene in winter, on multi-layered glass, signed 'Daum Nancy', dimensions 9 x 16.5cm.

£300-£400

All lots are subject to extra charges which may be viewed in Ts and Cs 3, 4, 5 and 10 at the back of this catalogue.



485

A GEORGE III SILVER TANKARD, with domed cover and pierced thumbpiece, later repoussé decorated with C-scrolls, flowerheads, foliage and a (plain) cartouche, on a matted ground, by James Sutton & James Bult, London 1783, height 21cm. £400–£500

486

A VICTORIAN SILVER GOBLET, engraved with ferns, framing two large plain reserves, on stem with beaded knop, the foot with conforming fern engraving and beaded rim, by James Dixon & Sons, Sheffield 1885, height 23cm. £300–£400



487

AN INTERESTING GEORGE III SILVER COMMEMORATIVE WINE GOBLET, of generous proportions, the bowl applied with an oval cast panel depicting a figure commissioning or giving his blessing to a group of three others, rays descending from the skies and with a pennant bearing the inscription 'Enlightened by Heaven to restore others to health and virtue', the base with reeded edge, the underside engraved neatly in copperplate 'Griffin & Adams, No 17 Ludgate Street, London', height 19cm. £300–£400

The plaque may refer to a non-conformist missionary society or a charity with connections to evangelism.

By 1808, Griffin & Adams, goldsmiths and jewellers, were listed at 76, Strand.

488

A PAIR OF GEORGE III SILVER WINE GOBLETs, the plain bowls engraved with a crest, on knopped stems and gadroon-edged bases, by Henry Green & Charles Aldridge, London 1771, height 16cm.

£400-£600



489

A MATCHED PAIR OF GEORGE III SILVER WINE GOBLETs, each engraved with a band of leaf decoration, a cursive initial 'N' within a swag-draped reserve and with reeded border to the foot, one by John Emes, London 1797, the other probably by William Stroud, London 1801, height 17cm.

£400-£600



490

A PAIR OF GEORGE III SILVER WINE GOBLETs, bright cut with swags and trailing lines of repeating leaves, by Thomas & Richard Payne, London 1778, height 16cm.

£400-£600



491

A COLLECTION OF 12 LATE 19TH / EARLY 20TH CENTURY SILVER OR WHITE METAL ENAMEL SOUVENIR SPOONS, the bowls mostly decorated with views of civic buildings in Germany, the Netherlands, Copenhagen, Lisbon, Vienna and The Pantiles, Tunbridge Wells, two with portraits: Queen Wilhemina and an unidentified figure (possibly Goethe), the terminals with city arms, in later fitted case. together with a set of 12 late 19th / early 20th century German silver gilt souvenir spoons, each terminal enamelled with a city coat of arms, cased.

£500-£600



492

A SET OF 12 LATE 19TH CENTURY RUSSIAN SILVER GILT AND ENAMEL COFFEE SPOONS, BY ZEREV NIKOLAI NIKOLAIEVICH, with twisted stems, oval bowls, anded vari-colour cloisonné decoration throughout, maker's mark, cased, *spoon length 10cm.*

£300-£400



Dowager Empress Maria Feodorovna, late 1890s



493

A RUSSIAN IMPERIAL GOLD PRESENTATION CIGARETTE CASE, BY FABERGÉ WORKMASTER GABRIEL NYKÄNEN (NIUKKANEN), ST PETERSBURG, POST 1908, of rounded rectangular form, decorated throughout with bands of reeding, the hinged cover applied with a diamond-set crowned Imperial double headed eagle, with cabochon sapphire thumbpiece, the inside lid engraved in script:

'Please accept this little remembrance fm. Maria 1913'

stamped mark for 56 zolotniks, maker's mark 'GN' struck twice, contained in gilt heightened fitted case, the cover with gilt Imperial double headed eagle, silk stamped 'A.Tillander St. Petersburg', length 89mm. £5,000-£7,000

Provenance: According to documentation provided by auctioneers Geoff H. Gray Pty. Limited of Sydney, who sold the cigarette case in a Private Collection in 1978, it was presented by the Dowager Empress Maria Feodorovna, Consort of Czar Alexander III, to the wife of Admiral N. C. Palmer RN, Captain of the Royal yacht *Victoria & Albert* from August 1909 – December 1913. He was appointed Naval Aide-Camp to King George V on 4 June 1913 and Commander of the Royal Victorian Order (V.C.O) on 13 October 1913.

Thence by family descent, until offered for sale in 1978.

The Empress Maria Feodorovna visited England every summer after 1907. Her sister, Queen Alexandra, Consort of King Edward VII, would similarly travel to Denmark each year for family reunions. British newspaper articles in August 1913 reference the Empress's summer visit to England on the Royal yacht. It would have been usual practice for the Empress to distribute gifts in thanks for kindnesses and faithful service.

Tillanders, the Finnish jewellers situated in the heart of St Petersburg, were by the beginning of the 20th century, a thriving business and receiving a steady stream of orders from the Russian Imperial family, including the Dowager Empress Maria Feodorovna. Their records also refer to many presentation jewels and gifts made for the Romanov Tercentenary in 1913.

Gabriel Niukkanen (Nykänen) (1854–1921)

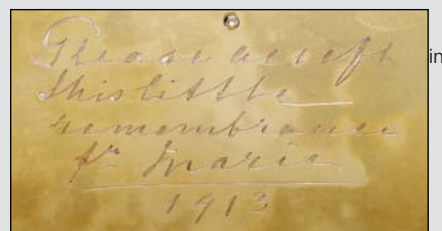
Born in central Finland, as a young man Nykänen left his home for St. Petersburg to pursue a career as a goldsmith, opening his own workshop in 1889, and taking premises at No. 39 Kazanskaya Street. Nykänen is thought to have worked initially as a sub-contractor to several manufacturing and retail jewellers, whilst also acting as a supplier and workmaster to Fabergé. He is best known for his production of fine gold and silver cigarette cases, many of which were made as Imperial presentation pieces; however they seldom bear the Fabergé hallmark.

Kenneth Snowman records that Gabriel Nykänen was appointed head of Fabergé's Odessa workshop, however recent research suggests that he worked in St. Petersburg without interruption until 1917. His nephew, the goldsmith Frans Botolf Nykänen is known to have worked Odessa, from 1902.

Literature:

Ulla Tillander-Godenheilm, *Fabergé and his masters and artisans*, pub. Unicorn, 2018.

David Schimmelpenninck van der Oye and Marie Betteley, *Beyond Fabergé, Imperial Russian Jewelry*, pub. Schiffer, 2020.





494

A SILVER MUG BY CHARLES STUART HARRIS, Britannia standard, of 18th century style, the body with vertical reeded decoration and central cartouche, initialed, with beaded scroll handle, date letter rubbed, probably 1896, height 10cm. **£120-£150**

495

A GEORGE II SILVER TWIN-HANDLED CUP, NEWCASTLE 1774, the bell-shaped body engraved with foliate initials 'J B R & C J R', having reeded handles, on collet foot, by John Langlands I, height 11cm. **£300-£400**



496

AN IRISH MID 18TH CENTURY SILVER TWIN HANDLED CUP, of good gauge, with leaf-capped scroll handles, the body applied with six vertical leaf motifs and with a later-added crested boss, maker's mark indistinct, '* R W', Dublin, no date letter, height 12cm. **£300-£500**



497

AN EDWARD VII SILVER TROPHY BOWL, the shaped rim cast with 'S' scrolls, the girdled body with hinged handles and a presentation inscription within a reserve of 'C' scrolls, the lower body with applied lobing, by Goldsmiths & Silversmiths Co. Ltd, London 1907, diameter 28cm. £1,000–£1,200



498

AN ELIZABETH II SILVER TWIN-HANDLED CIRCULAR FRUIT STAND, the border cast with fruiting vine and pierce-decorated with scrollwork, on foot, by Viners Ltd (Emile Viner) Sheffield 1967, diameter (excluding handles) 31cm. £600–£700



499

A PAIR OF VICTORIA SILVER DWARF CANDLESTICKS, with moulded wrythen decoration and bead-edged circular bases, by Hawksworth, Eyre & Co. Ltd., Sheffield 1896, with weighted bases, height 10cm.

£100-£120



500

A MID 20TH CENTURY INDONESIAN YOGYA SILVER TRAY, the rectangular shallow tray with repoussé foliate decoration to the border and polished arabesque outline, '800' silver standard, length approximately 23cm.

£100-£120



501

A MID 20TH CENTURY INDONESIAN YOGYA SILVER DISH, the square-shaped dish with flared edges, repoussé foliate decoration and applied with the 'Garuda Pancasila'; the national emblem of Indonesia, the whole within a polished arabesque outline, stamped 'PDM800 DELUXE', length approximately 28cm, depth 7cm.

£300-£500

'Yogya silver' was manufactured in Java, Indonesia, during the second quarter of the 20th century, after a significant evolution in design was supported by both Javanese and Dutch advocates of decorative arts. The production of 'Yogya silver' especially flourished after Indonesian independence was proclaimed in 1945.



502 Y

A LATE 19TH CENTURY INDIAN SILVER THREE PIECE TEA SERVICE, BY GRISH CHUNDER DUTT, CALCUTTA, of good gauge, decorated in high relief with native figures in rural landscapes with trees and thatched buildings on a sanded ground, the handles and spout modelled as elephant trunks, the teapot finial designed as a figure on a elephant, each piece stamped to the base with maker's mark 'GRISH CHUNDER DUTT, BHOWANIPORE, CALCUTTA', teapot with ivory insulators, height of teapot approximately 15cm. £600-£800

Provenance: Grish Chunder Dutt & Sons were one of the best and most prolific silversmiths working in Bhowanipore, a suburb of Calcutta, in the late 19th and early 20th centuries. The firm was established in 1872 and became known for their distinctive local style of decoration, depicting rural scenes of Bengal village life and local religious traditions, possibly resulting from the 1883 Calcutta International Exhibition which encouraged the development of regional styles, as opposed to the British inspired Colonial style of silverwork prevalent in the 19th century.

Literature:

Wilkinson, Wynyard: *Indian Silver 1858-1947*, London 1999, pages 55-57.

Please refer to Department for Ivory Submission Reference.

End of Sale



INDEX OF MAKERS

ADLER	173	OMEGA	372–373, 379, 382–383, 388, 405, 407, 414, 426–427, 437–438
ASPREY & CO.	466	PÉRY & FILS	318
BAUME & MERCIER	391, 415, 422, 423	SAMPSON MORDAN & CO	469
BOUCHERON	262, 389	SHAEFFER	474
BREITLING	418, 420	SHIMANSKY	129
CARTIER	41, 171–172, 396, 398–403, 417, 432, 460, 472, 475–476	SMITH & PEPPER	3
CHAUMET	79, 249, 306	H. STERN	102
CHOPARD	423, 424	ROLEX	144, 368, 370, 393, 408, 430, 436
CHIAMPESAN	316–317	TAG HEUER	431, 435
WILLIAM COMYNS	465	THEO FENNELL	126
CROPP & FARR	52, 113	TIFFANY & CO.	234, 261
DAUM	483–484	TUDOR	366, 369, 371, 377–378
DAVID MORRIS	238, 270	GEORGE UNITE	459
DEAKIN & FRANCIS	13, 50	VACHERON CONSTANTIN	358, 384
DELANEAU	390	VAN CLEEF & ARPELS	458
GHRISH CHUNDER DUTT	502	WAKELY & WHEELER	477
GIRARD-PERREGAUX	392, 395, 411, 413		
GRAFF	274		
JAEGER-LECOULTRE	380–381, 412, 429		
KUTCHINSKY	272		
LEBOLT & CO	479		
LIBERTY & CO.	37–38, 480–481		
LONGINES	428, 447		
MIKIMOTO	276		
GABRIEL NYKÄNEN (NIUKKANEN)	493		

DIAMONDS

DIAMONDS ARE ASSESSED ACCORDING TO THE FOUR C'S

1. CARAT WEIGHT

1 Carat equals 0.2 Grams.

2. CUT

The quality of a cut is assessed in terms of its proportions, symmetry & polish.

3. COLOUR

Unless regarded as a 'fancy' coloured diamond, all diamonds are graded on their lack of colour.

4. CLARITY

Diamonds are graded on their freedom from inclusions (within the stone) & blemishes (found on the surface of the stone). They are assessed using 10x magnification.

Please note the four cs of a diamond cannot be fully assessed whilst the stone is mounted. The approximate gradings provided in the condition reports are estimations, made by the specialists whilst the stones were mounted & are for guidance only. If a stone has been unmounted & assessed in a gemmological laboratory, this will be noted in the cataloguing/condition report.

COLOUR GRADES

GIA	CIBJO	TRADITIONAL
D	Exceptional White + (EW+)	Finest White
E	Exceptional White (EW)	Finest White
F	Rare White + (RW+)	Fine White
G	Rare White (RW)	Fine White
H	White (W)	White
I	Slightly Tinted White (STW)	Commercial White
J	Slightly Tinted White (STW)	Top Silver Cape
K	Tinted White (TW)	Top Silver Cape
L	Tinted White (TW)	Silver Cape
M-Z	Tinted Colour (TC)	Cape
Fancy	Fancy Colour	

CLARITY GRADES

GIA	CIBJO	DESCRIPTION
Flawless (FL)	Loupe Clean (LC)	Shows no inclusions or blemishes
Internally Flawless (IF)	Loupe Clean (LC)	Shows no inclusions & only insignificant blemishes
Very Very Slightly Included (VVS1/2)	Very Very Slightly Included (VVS1-2)	Contains minute inclusions which are very difficult for an experienced grader to see with 10x magnification
Very Slightly Included (VS1-2)	Very Slightly Included (VS1-2)	Contains very small inclusions that are difficult to see with 10x magnification
Slightly Included (SI1-2)	Slightly Included (SI1-2)	Contains inclusions that are easily visible with 10x magnification
Imperfect/Included (I1-3)	Pique (P1-3)	Contains inclusions that are obvious with 10x magnification & can often be seen with the naked eye; durability may be affected



COMMISSION FORM

JEWELLERY, WATCHES, SILVER & OBJECTS OF VERTU
10 SEPTEMBER 2024

Please bid on my behalf at the above sale for the following Lot(s) up to the price(s) mentioned overleaf. These bids are to be executed as cheaply as is permitted by other bids or any reserve.

I understand that in the case of a successful bid, a premium of 24 per cent (plus VAT if delivered or collected within the UK) will be payable by me on the hammer price of all lots.

Please see the Terms and Conditions of Business for any other charges which may be applicable.

Please ensure your bids comply with the steps outlined below:

Up to £100 by £5
£100 to £200 by £10
£200 to £500 by £20
£500 to £1,000 by £50
£1,000 to £2,000 by £100
£2,000 to £5,000 by £200
£5,000 to £10,000 by £500
£10,000 to £20,000 by £1,000
£20,000 to £50,000 by £2,000

Bids of unusual amounts **will be rounded down** to the bid step below and will **not** take precedence over a similar bid unless received first.

NOTE:

All bids placed other than via our website should be received by 4 PM on the day prior to the sale. Although we will endeavour to execute any late bids, Noonans cannot accept responsibility for bids received after that time. It is strongly advised that you use our online Advance Bidding Facility. If you have a valid email address bids may be entered, and amended or cancelled, online at www.noonans.co.uk right up until a lot is offered. You will receive a confirmatory email for all bids and amendments, Bids posted to our office using this form will be entered by our staff using the same Advance Bidding Facility. **There is, therefore, no better way of ensuring the accuracy of your advance bids than to place them yourself online.**

I confirm that I have read and agree to abide by the Terms and Conditions of Business in the catalogue.

SIGNED

NAME (block capitals)

CLIENT CODE

ADDRESS

TELEPHONE

EMAIL

If successful, payment can be made in the following ways:

Credit/Debit card online via www.noonans.co.uk

Bank Transfer

Bankers: Lloyds; Piccadilly, London; Sort code: 30-96-64; Account No.: 00622865;
Swift Code: LOYDGB2L; IBAN: GB70LOYD30966400622865; BIC: LOYDGB21085

Cheque payable to Noonans

Cash up to a maximum of £5,000

All payments to be made in pounds sterling.

Please note payment is due within five working days of the end of the auction.

YOUR BIDS MAY BE PLACED OVERLEAF



COMMISSION FORM

JEWELLERY, WATCHES, SILVER & OBJECTS OF VERTU
10 SEPTEMBER 2024

If you wish to place a 'plus one' bid, please write '+1' next to the relevant bid

Table with 6 columns: LOT NO., £ BID, LOT NO., £ BID, LOT NO., £ BID. Multiple rows for bid entry.

SALEROOM NOTICES:

Any Saleroom Notices relevant to this auction are automatically posted on the Lot Description pages on our website. Prospective buyers are strongly advised to consult the site for updates.

SUCCESSFUL BIDS

Should you be a successful bidder you will receive an invoice detailing your purchases. All purchases are sent by registered post unless otherwise instructed, for which a minimum charge of £12.00 (plus VAT if resident in the UK) will be added to your invoice. All payments for purchases must be made in pounds sterling. Please check your bids carefully.

PRICES REALISED

The hammer prices bid at the auction are posted on the Internet at www.noonans.co.uk in real time. A full list of prices realised appear on our website as the auction progresses. Telephone enquiries are welcome from 9 AM the following day.

CONDITIONS MAINLY CONCERNING BUYERS

1 The buyer

The highest bidder shall be the buyer at the 'hammer price' and any dispute shall be settled at the auctioneer's absolute discretion. Every bidder shall be deemed to act as principal unless there is in force a written acknowledgement by Noonans Mayfair Ltd. ("Noonans") that he acts as agent on behalf of a named principal. Bids will be executed in the order that they are received.

2 Minimum increment

The auctioneer shall have the right to refuse any bid which does not conform to Noonans' published bidding increments which may be found at noonans.co.uk and in the bidding form included with the auction catalogue.

3 The premium

The buyer shall pay to Noonans a premium of 24% on the 'hammer price' and agrees that Noonans, when acting as agent for the seller, may also receive commission from the seller in accordance with Condition 16.

4 Value Added Tax (VAT)

The buyers' premium is subject to the current rate of Value Added Tax if the lot is delivered to or collected by the purchaser within the UK.

Lots marked 'X' are subject to importation VAT of 5% on the hammer price unless re-exported outside the UK, as per the conditions below.

Buyers who wish to hand carry their lots to export them from the UK will be charged VAT at the prevailing rate and importation VAT (where applicable) and will not be able to claim a VAT refund.

Buyers will only be able to secure a VAT free invoice and/or VAT refund if the goods are exported by Noonans or a pre-approved commercial shipper. Where the buyer instructs a pre-approved commercial shipper, proof of correct export out of the UK must be provided to Noonans by the buyer within 30 days of export and no later than 90 days from the date of the sale. Refunds are subject to a £50 administrative fee.

Lots marked '††' are subject to the Standard Rate of VAT, currently 20%, on both the hammer price and buyers' premium.

VAT can only be removed from the hammer price, if goods are exported by Noonans or a pre-approved commercial shipper as per above.

All lots will be subject to VAT on the buyers' premium regardless of whether the lot is exported.

5. Artist's Resale Rights (Droit de Suite)

Lots marked ARR in the catalogue indicate lots that may be subject to this royalty payment.

The royalty will be charged to the buyer on the 'hammer price' and is in addition to the buyers' premium. Royalties are charged on a sliding percentage scale as shown below but do not apply to lots where the hammer price is less than 1000 pounds sterling. All royalty charges are paid in full to The Design and Artists Copyright Society (DACS).

Portion of the hammer price	Royalties
From 0 to £50,000	4%
From £50,000.01 to £200,000	3%
From £200,000.01 to £350,000	1%
From £350,000.01 to £500,000	0.5%
Exceeding £500,000	0.25%

VAT does not apply to the Artist's Resale Rights.

6 Payment

When a lot is sold the buyer shall:

- (a) confirm to Noonans his or her name and address and, if so requested, give proof of identity; and
- (b) pay to Noonans the 'total amount due' in pounds sterling within five working days of the end of the sale (unless credit terms have been agreed with Noonans before the auction). Please note that we will not accept cash payments in excess of £5,000 (five thousand pounds) in settlement for purchases made at any one auction.

7 Noonans may, at its absolute discretion, agree credit terms with the buyer before an auction under which the buyer will be entitled to take possession of lots purchased up to an agreed amount in value in advance of payment by a determined future date of the 'total amount due'.

8 Any payments by a buyer to Noonans may be applied by Noonans towards any sums owing from that buyer to Noonans on any account whatever, without regard to any directions of the buyer, his or her agent, whether expressed or implied.

9 Collection of purchases

The ownership of the lot(s) purchased shall not pass to the buyer until he or she has made payment in full to Noonans of the 'total amount due' in pounds sterling.

10 (a) The buyer shall at his or her own expense take away the lot(s) purchased not later than 5 working days after the day of the auction but (unless credit terms have been agreed in accordance with Condition 7) not before payment to Noonans of the 'total amount due'.

(b) The buyer shall be responsible for any removal, storage and insurance charges on any lot not taken away within 5 working days after the day of the auction.

(c) The packing and handling of purchased lots by Noonans staff is undertaken solely as a courtesy to clients and, in the case of fragile articles, will be undertaken only at Noonans' discretion. In no event will Noonans be liable for damage to glass or frames, regardless of the cause. Bulky lots or sharp implements, etc., may not be suitable for in-house shipping.

11 Buyers' responsibilities for lots purchased

The buyer will be responsible for loss or damage to lots purchased from the time of collection or the expiry of 5 working days after the day of the auction, whichever is the sooner. Neither Noonans nor its servants or agents shall thereafter be responsible for any loss or damage of any kind, whether caused by negligence or otherwise, while any lot is in its custody or under its control.

Loss and damage warranty cover at the rate of 1.5% will be applied to any lots despatched by Noonans to destinations outside the UK, unless specifically instructed otherwise by the consignee.

12 Remedies for non-payment or failure to collect purchase

If any lot is not paid for in full and taken away in accordance with Conditions 6 and 10, or if there is any other breach of either of those Conditions, Noonans as agent of the seller shall, at its absolute discretion and without prejudice to any other rights it may have, be entitled to exercise one or

more of the following rights and remedies:

- (a) to proceed against the buyer for damages for breach of contract.
- (b) to rescind the sale of that or any other lots sold to the defaulting buyer at the same or any other auction.
- (c) to re-sell the lot or cause it to be re-sold by public auction or private sale and the defaulting buyer shall pay to Noonans any resulting deficiency in the 'total amount due' (after deduction of any part payment and addition of re-sale costs) and any surplus shall belong to the seller.
- (d) to remove, store and insure the lot at the expense of the defaulting buyer and, in the case of storage, either at Noonans' premises or elsewhere.
- (e) to charge interest at a rate not exceeding 2 percent per month on the 'total amount due' to the extent it remains unpaid for more than 5 working days after the day of the auction.
- (f) to retain that or any other lot sold to the same buyer at the sale or any other auction and release it only after payment of the 'total amount due'.
- (g) to reject or ignore any bids made by or on behalf of the defaulting buyer at any future auctions or obtaining a deposit before accepting any bids in future.
- (h) to apply any proceeds of sale then due or at any time thereafter becoming due to the defaulting buyer towards settlement of the 'total amount due' and to exercise a lien on any property of the defaulting buyer which is in Noonans' possession for any purpose.

13 Liability of Noonans and sellers

(a) Goods auctioned are usually of some age. All goods are sold with all faults and imperfections and errors of description. Illustrations in catalogues are for identification only. Buyers should satisfy themselves prior to the sale as to the condition of each lot and should exercise and rely on their own judgement as to whether the lot accords with its description. Subject to the obligations accepted by Noonans under this Condition, none of the seller, Noonans, its servants or agents is responsible for errors of descriptions or for the genuineness or authenticity of any lot. No warranty whatever is given by Noonans, its servants or agents, or any seller to any buyer in respect of any lot and any express or implied conditions or warranties are hereby excluded.

(b) Any lot which proves to be a 'deliberate forgery' may be returned by the buyer to Noonans within 15 days of the date of the auction in the same condition in which it was at the time of the auction, accompanied by a statement of defects, the number of the lot, and the date of the auction at which it was purchased. If Noonans is satisfied that the item is a 'deliberate forgery' and that the buyer has and is able to transfer a good and marketable title to the lot free from any third party claims, the sale will be set aside and any amount paid in respect of the lot will be refunded, provided that the buyer shall have no rights under this Condition if:

- (i) the description in the catalogue at the date of the sale was in accordance with the then generally accepted opinion of scholars and experts or fairly indicated that there was a conflict of such opinion; or
- (ii) the only method of establishing at the date of publication of the catalogue that the lot was a

'deliberate forgery' was by means of scientific processes not generally accepted for use until after publication of the catalogue or a process which was unreasonably expensive or impractical.

(c) A buyer's claim under this Condition shall be limited to any amount paid in respect of the lot and shall not extend to any loss or damage suffered or expense incurred by him or her.

(d) The benefit of the Condition shall not be assignable and shall rest solely and exclusively in the buyer who, for the purpose of this condition, shall be and only be the person to whom the original invoice is made out by Noonans in respect of the lot sold.

CONDITIONS MAINLY CONCERNING SELLERS AND CONSIGNORS

14 Warranty of title and availability

The seller warrants to Noonans and to the buyer that he or she is the true owner of the property or is properly authorised to sell the property by the true owner and is able to transfer good and marketable title to the property free from any third party claims. The seller will indemnify Noonans, its servants and agents and the buyer against any loss or damage suffered by either in consequence of any breach on the part of the seller.

15 Reserves

The seller shall be entitled to place, prior to the first day of the auction, a reserve at or below the low estimate on any lot provided that the low estimate is more than £100. Such reserve being the minimum 'hammer price' at which that lot may be treated as sold. A reserve once placed by the seller shall not be changed without the consent of Noonans. Noonans may at their option sell at a 'hammer price' below the reserve but in any such cases the sale proceeds to which the seller is entitled shall be the same as they would have been had the sale been at the reserve. Where a reserve has been placed, only the auctioneer may bid on behalf of the seller.

16 Authority to deduct commission and expenses

The seller authorises Noonans to deduct commission at the 'stated rate' and 'expenses' from the 'hammer price' and acknowledges Noonans' right to retain the premium payable by the buyer.

17 Rescission of sale

If before Noonans remit the 'sale proceeds' to the seller, the buyer makes a claim to rescind the sale that is appropriate and Noonans is of the opinion that the claim is justified, Noonans is authorised to rescind the sale and refund to the buyer any amount paid to Noonans in respect of the lot.

18 Payment of sale proceeds

Noonans shall remit the 'sale proceeds' to the seller 35 days after the auction, but if by that date Noonans has not received the 'total amount due' from the buyer then Noonans will remit the sale proceeds within five working days after the date on which the 'total amount due' is received from the buyer. If credit terms have been agreed between Noonans and the buyer, Noonans shall remit to the seller the sale proceeds 35 days after the auction unless otherwise agreed by the seller.

19 If the buyer fails to pay to Noonans the 'total amount due' within 35 days after the auction, Noonans will endeavour to notify the seller and take the seller's instructions as to the appropriate course of action and, so far as in Noonans' opinion is practicable, will assist the seller to recover the

'total amount due' from the buyer. If circumstances do not permit Noonans to take instructions from the seller, the seller authorises Noonans at the seller's expense to agree special terms for payment of the 'total amount due', to remove, store and insure the lot sold, to settle claims made by or against the buyer on such terms as Noonans shall in its absolute discretion think fit, to take such steps as are necessary to collect monies due by the buyer to the seller and if necessary to rescind the sale and refund money to the buyer if appropriate.

20 If, notwithstanding that, the buyer fails to pay to Noonans the 'total amount due' within 35 days after the auction and Noonans remits the 'sale proceeds' to the seller, the ownership of the lot shall pass to Noonans.

21 Charges for withdrawn lots

Where a seller cancels instructions for sale, Noonans reserve the right to charge a fee of 15% of Noonans' then latest middle estimate of the auction price of the property withdrawn, together with Value Added Tax thereon if the seller is resident in the UK, and 'expenses' incurred in relation to the property.

22 Rights to photographs and illustrations

The seller gives Noonans full and absolute right to photograph and illustrate any lot placed in its hands for sale and to use such photographs and illustrations and any photographs and illustrations provided by the seller at any time at its absolute discretion (whether or not in connection with the auction).

23 Unsold lots

Where any lot fails to sell, Noonans shall notify the seller accordingly. The seller shall make arrangements either to re-offer the lot for sale or to collect the lot.

24 Noonans reserve the right to charge commission up to one-half of the 'stated rates' calculated on the 'bought-in price' and in addition 'expenses' in respect of any unsold lots.

GENERAL CONDITIONS AND DEFINITIONS

25 Noonans sells as agent for the seller (except where it is stated wholly or partly to own any lot as principal) and as such is not responsible for any default by seller or buyer.

26 Any representation or statement by Noonans, in any catalogue as to authorship, attribution, genuineness, origin, date, age, provenance, condition or estimated selling price is a statement of opinion only. Every person interested should exercise and rely on his or her own judgement as to such matters and neither Noonans nor its servants or agents are responsible for the correctness of such opinions.

27 Whilst the interests of prospective buyers are best served by attendance at the auction, Noonans will, if so instructed, execute bids on their behalf. Neither Noonans nor its servants or agents are responsible for any neglect or default in doing so or for failing to do so.

28 Noonans shall have the right, at its discretion, to refuse admission to its premises or attendance at its auctions by any person.

29 Noonans has absolute discretion without giving any reason to refuse any bid, to divide any lot, to combine any two or more lots, to withdraw any lot from the auction and in case of dispute to put

up any lot for auction again.

30 (a) Any indemnity under these Conditions shall extend to all actions, proceedings costs, expenses, claims and demands whatever incurred or suffered by the person entitled to the benefit of the indemnity.

(b) Noonans declares itself to be a trustee for its relevant servants and agents of the benefit of every indemnity under these Conditions to the extent that such indemnity is expressed to be for the benefit of its servants and agents.

31 Any notice by Noonans to a seller, consignor, prospective bidder or buyer may be given by first class mail, airmail or email and if so given shall be deemed to have been duly received by the addressee within 48 hours.

32 These Conditions shall be governed by and construed in accordance with English law. All transactions to which these Conditions apply and all matters connected therewith shall also be governed by English law. Noonans hereby submits to the exclusive jurisdiction of the English courts and all other parties concerned hereby submit to the non-exclusive jurisdiction of the English courts.

33 In these Conditions:

(a) 'catalogue' includes any advertisement, brochure, estimate, price list or other publication;

(b) 'hammer price' means the price at which a lot is knocked down by the auctioneer to the buyer;

(c) 'total amount due' means the 'hammer price' in respect of the lot sold together with any premium, Value Added Tax chargeable and additional charges and expenses due from a defaulting buyer in pounds sterling;

(d) 'deliberate forgery' means an imitation made with the intention of deceiving as to authorship, origin, date, age, period, culture or source which is not shown to be such in the description in the catalogue and which at the date of the sale had a value materially less than it would have had if it had been in accordance with that description;

(e) 'sale proceeds' means the net amount due to the seller being the 'hammer price' of the lot sold less commission at the 'stated rates' and 'expenses' and any other amounts due to Noonans by the seller in whatever capacity and howsoever arising;

(f) 'stated rate' means Noonans' published rates of commission for the time and any Value Added Tax thereon;

(g) 'expenses' in relation to the sale of any lot means Noonans charges and expenses for insurance, illustrations, special advertising, certification, remedials, packing and freight of that lot and any Value Added Tax thereon;

(h) 'bought-in price' means 5 per cent more than the highest bid received below the reserve.

34 Vendors' commission of sales

A commission of 15% is payable by the vendor on the hammer price on lots sold.

Insurance is charged at 1.5% of the hammer price.

35 VAT

Commission, illustrations, insurance and expenses are subject to VAT if the seller is resident in the UK.

NOONANS
MAYFAIR

CONSIGNING NOW

WATCHES

28 NOVEMBER

CLOSING FOR ENTRIES 15 OCTOBER

ALL ENQUIRIES: PLEASE CALL 020 7016 1700 OR EMAIL [JEWELLERY@NOONANS.CO.UK](mailto:jewellery@noonans.co.uk)



A STAINLESS STEEL AUTOMATIC CHRONOGRAPH WRISTWATCH BY ROLEX, CIRCA 2009
SOLD ON 11 JUNE 2024 HAMMER PRICE: £11,000

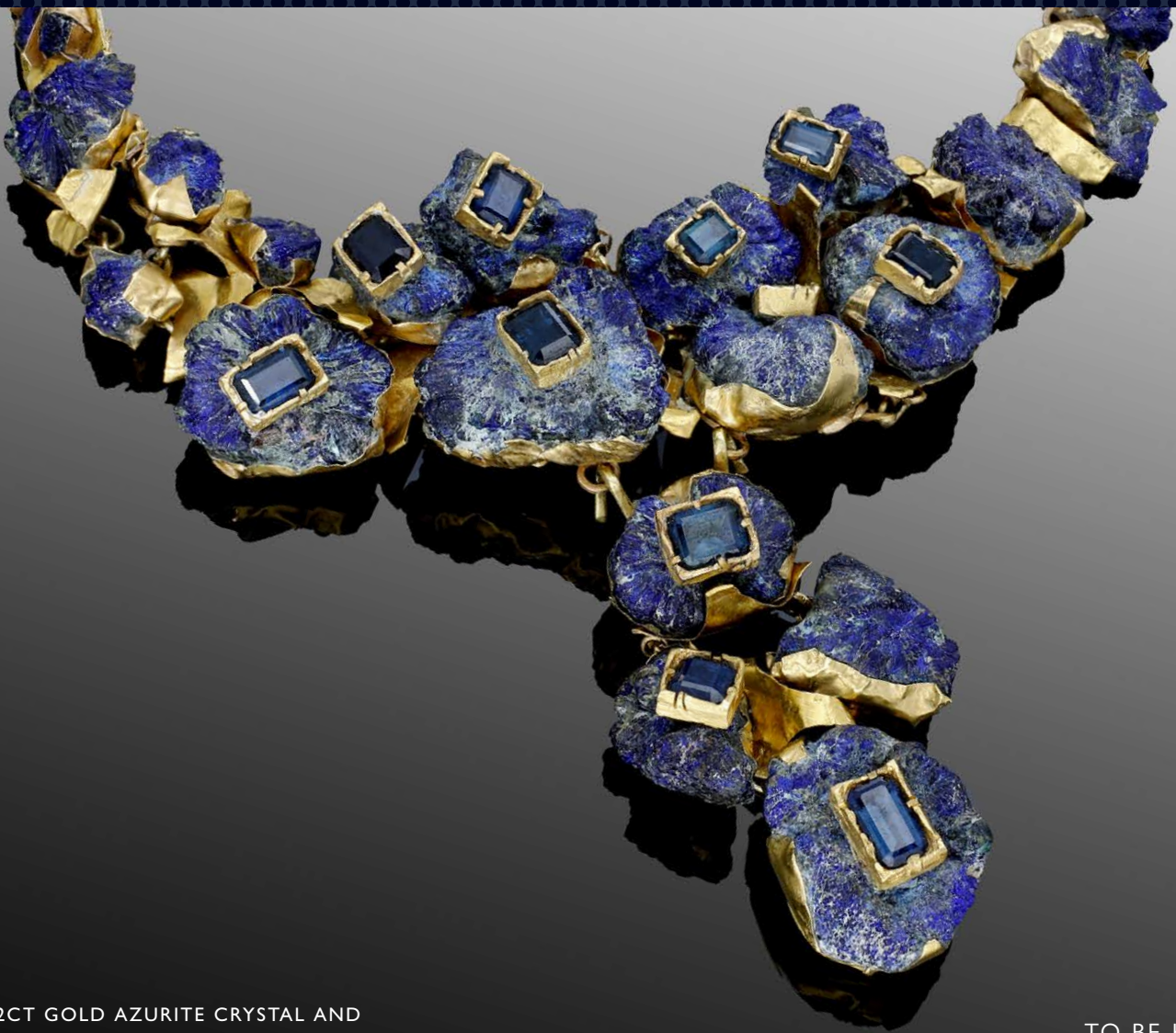
NOONANS
MAYFAIR

NOONANS EXHIBITIONS PRESENTS

**LOUIS OSMAN:
THE JENKINS FAMILY COLLECTION**

TO BE INCLUDED IN AN EXHIBITION OF

MODERN BRITISH JEWELLERY AND SILVER DESIGNERS



A 22CT GOLD AZURITE CRYSTAL AND
SAPPHIRE NECKLACE BY LOUIS OSMAN, 1972

THE JENKINS FAMILY COLLECTION WILL BE OFFERED
FOR SALE AT NOONANS ON 26 NOVEMBER

TO BE HELD AT
NOONANS MAYFAIR
MONDAY 7 - SATURDAY 12 OCTOBER
10.30AM - 4PM EACH DAY • FREE ENTRY

NOONANS
MAYFAIR

NOONANS EXHIBITIONS PRESENTS
A LOAN EXHIBITION
FROM AN IMPORTANT PRIVATE COLLECTION

TO BE INCLUDED IN AN EXHIBITION OF

MODERN BRITISH JEWELLERY AND SILVER DESIGNERS



AN 18CT GOLD DIAMOND SET BROOCH
BY ANDREW GRIMA, 1964

TO BE HELD AT
NOONANS MAYFAIR
MONDAY 7 - SATURDAY 12 OCTOBER
10.30AM - 4PM EACH DAY • FREE ENTRY

AT NOONANS OUR EXPERTISE EXTENDS BEYOND THE KNOWLEDGE WITHIN OUR SPECIALIST DEPARTMENTS TO INCLUDE ALL ASPECTS OF OUR AUCTION HOUSE, FROM OUR PHOTOGRAPHY STUDIO TO OUR ADVANCED PROPRIETARY ONLINE BIDDING SYSTEM.

We're a close-knit team of experts with deep knowledge across our specialist subjects: banknotes, coins, detectorist finds, historical & art medals, jewellery, medals & militaria, objects of vertu, silver, tokens and watches. Focusing on these fascinating items, we share this expertise with an international community of sellers and buyers.

Each sale item that passes through our Mayfair auction house is appraised by an expert recognised as a leading authority in a particular field of interest, ranging from ancient coins and military medals to jewellery and vintage watches. This depth of knowledge across all departments sets us apart from other generalist auctioneers.

SELL WITH US

Respected worldwide for the breadth and depth of our specialist expertise, we can connect you to a broad, deep pool of potential buyers. Over the years, we've brought together an international community of people who share our particular passion. As recognised experts, with a vast store of freely available in-house knowledge and experience, we've earned the trust of buyers across the globe.

Our fees are transparent. Unlike many other auction houses, we don't charge for collecting your lots, photography or marketing and there's no minimum lot charge.

Not surprisingly, our position as a trusted authority, with deep global reach, often leads to the achievement of higher than expected prices at auction.

Free valuation

If you're interested in selling your items and you'd like a free auction valuation, without obligation, our specialists will be happy to help. You can submit online or bring your sale item to a valuation day at our Mayfair auction house or at a regional venue. Alternatively, request a home visit.

BUY WITH US

We're here for you, whether you're an experienced collector with a depth of knowledge or an occasional buyer attracted to a particular piece of jewellery or vintage watch.

Be assured that the item in question has been accurately described and photographed, detailing all available information, from its provenance to its current condition. Be certain that our price estimate is fair and sensible.

Delve deep into our website and you'll discover a vast store of helpful background data, including prices achieved for similar items at previous auctions. Informed and empowered, study our detailed online catalogue, then place your bid in complete confidence.

NOONANS
MAYFAIR



WWW.NOONANS.CO.UK